

Goat Anti-BHMT Antibody
Peptide-affinity purified goat antibody
Catalog # AF1150a

Specification

Goat Anti-BHMT Antibody - Product Information

Application	WB
Primary Accession	Q93088
Other Accession	NP_001704 , 635 , 12116 (mouse) , 81508 (rat)
Reactivity	Human, Mouse, Rat
Predicted	Dog
Host	Goat
Clonality	Polyclonal
Concentration	100ug/200ul
Isotype	IgG
Calculated MW	44998

Goat Anti-BHMT Antibody - Additional Information

Gene ID 635

Other Names

Betaine--homocysteine S-methyltransferase 1, 2.1.1.5, BHMT

Format

0.5 mg IgG/ml in Tris saline (20mM Tris pH7.3, 150mM NaCl), 0.02% sodium azide, with 0.5% bovine serum albumin

Storage

Maintain refrigerated at 2-8°C for up to 6 months. For long term storage store at -20°C in small aliquots to prevent freeze-thaw cycles.

Precautions

Goat Anti-BHMT Antibody is for research use only and not for use in diagnostic or therapeutic procedures.

Goat Anti-BHMT Antibody - Protein Information

Name BHMT {ECO:0000303|PubMed:8798461}

Function

Involved in the regulation of homocysteine metabolism. Converts betaine and homocysteine to dimethylglycine and methionine, respectively. This reaction is also required for the irreversible oxidation of choline.

Cellular Location

Cytoplasm, cytosol {ECO:0000250|UniProtKB:O09171}. Nucleus

{ECO:0000250|UniProtKB:O09171} Note=Predominantly localized in the cytoplasm with a small fraction detected in the nucleus. Translocates into the nucleus upon oxidative stress.
{ECO:0000250|UniProtKB:O09171}

Tissue Location

Found exclusively in liver and kidney.

Goat Anti-BHMT Antibody - Protocols

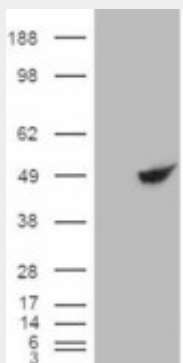
Provided below are standard protocols that you may find useful for product applications.

- [Western Blot](#)
- [Blocking Peptides](#)
- [Dot Blot](#)
- [Immunohistochemistry](#)
- [Immunofluorescence](#)
- [Immunoprecipitation](#)
- [Flow Cytometry](#)
- [Cell Culture](#)

Goat Anti-BHMT Antibody - Images



AF1150a (0.03 µg/ml) staining of Rat Liver lysate (35 µg protein in RIPA buffer). Primary incubation was 1 hour. Detected by chemiluminescence.



HEK293 overexpressing BHMT RC203148) and probed with AF1150a (mock transfection in first lane), tested by Origene.

Goat Anti-BHMT Antibody - Background

This gene encodes a cytosolic enzyme that catalyzes the conversion of betaine and homocysteine to dimethylglycine and methionine, respectively. Defects in this gene could lead to hyperhomocyst(e)inemia, but such a defect has not yet been observed.

Goat Anti-BHMT Antibody - References

Maternal folate-related gene environment interactions and congenital heart defects. Hobbs CA, et al. Obstet Gynecol, 2010 Aug. PMID 20664391.

Maternal genes and facial clefts in offspring: a comprehensive search for genetic associations in two population-based cleft studies from Scandinavia. Jugessur A, et al. PLoS One, 2010 Jul 9. PMID 20634891.

Variation at the NFATC2 Locus Increases the Risk of Thiazolinedinedione-Induced Edema in the Diabetes REduction Assessment with ramipril and rosiglitazone Medication (DREAM) Study. Bailey SD, et al. Diabetes Care, 2010 Jul 13. PMID 20628086.

Early-onset ischaemic stroke: analysis of 58 polymorphisms in 17 genes involved in methionine metabolism. Giusti B, et al. Thromb Haemost, 2010 Aug 2. PMID 20458436.

A Large-scale genetic association study of esophageal adenocarcinoma risk. Liu CY, et al. Carcinogenesis, 2010 Jul. PMID 20453000.