

Goat Anti-CD11A / integrin alpha L Antibody
Peptide-affinity purified goat antibody
Catalog # AF1212a

Specification

Goat Anti-CD11A / integrin alpha L Antibody - Product Information

Application	WB, IHC, E
Primary Accession	P20701
Other Accession	NP_001107852 , 3683
Reactivity	Human
Predicted	Dog
Host	Goat
Clonality	Polyclonal
Concentration	100ug/200ul
Isotype	IgG
Calculated MW	128770

Goat Anti-CD11A / integrin alpha L Antibody - Additional Information

Gene ID 3683

Other Names

Integrin alpha-L, CD11 antigen-like family member A, Leukocyte adhesion glycoprotein LFA-1 alpha chain, LFA-1A, Leukocyte function-associated molecule 1 alpha chain, CD11a, ITGAL, CD11A

Dilution

WB~~1:1000
IHC~~1:100~500
E~~N/A

Format

0.5 mg IgG/ml in Tris saline (20mM Tris pH7.3, 150mM NaCl), 0.02% sodium azide, with 0.5% bovine serum albumin

Storage

Maintain refrigerated at 2-8°C for up to 6 months. For long term storage store at -20°C in small aliquots to prevent freeze-thaw cycles.

Precautions

Goat Anti-CD11A / integrin alpha L Antibody is for research use only and not for use in diagnostic or therapeutic procedures.

Goat Anti-CD11A / integrin alpha L Antibody - Protein Information

Name ITGAL ([HGNC:6148](#))

Synonyms CD11A

Function

Integrin ITGAL/ITGB2 is a receptor for ICAM1, ICAM2, ICAM3 and ICAM4. Integrin ITGAL/ITGB2 is a receptor for F11R (PubMed:11812992, PubMed:15528364). Integrin ITGAL/ITGB2 is a receptor for the secreted form of ubiquitin-like protein ISG15; the interaction is mediated by ITGAL (PubMed:29100055). Involved in a variety of immune phenomena including leukocyte-endothelial cell interaction, cytotoxic T-cell mediated killing, and antibody dependent killing by granulocytes and monocytes. Contributes to natural killer cell cytotoxicity (PubMed:15356110). Involved in leukocyte adhesion and transmigration of leukocytes including T-cells and neutrophils (PubMed:11812992). Acts as a platform at the immunological synapse to translate TCR engagement and density of the ITGAL ligand ICAM1 into graded adhesion (PubMed:38195629). Required for generation of common lymphoid progenitor cells in bone marrow, indicating a role in lymphopoiesis (By similarity). Integrin ITGAL/ITGB2 in association with ICAM3, contributes to apoptotic neutrophil phagocytosis by macrophages (PubMed:23775590).

Cellular Location

Cell membrane; Single-pass type I membrane protein. Note=Upon antigen recognition by the TCR, is recruited to lipid rafts (PubMed:15684041).

Tissue Location

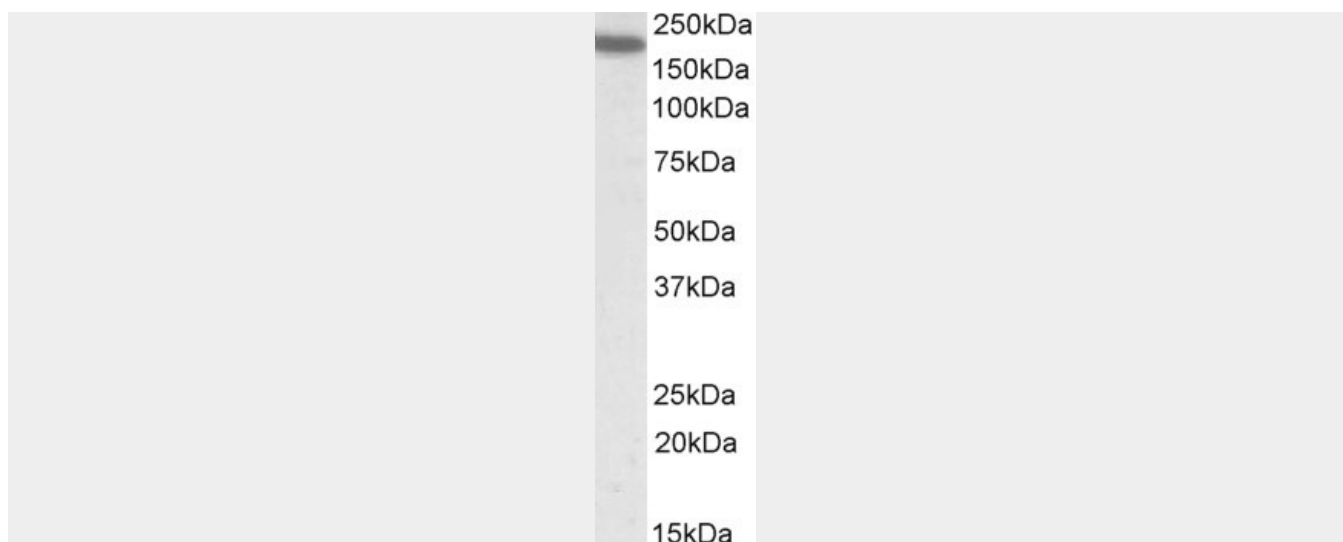
Leukocytes.

Goat Anti-CD11A / integrin alpha L Antibody - Protocols

Provided below are standard protocols that you may find useful for product applications.

- [Western Blot](#)
- [Blocking Peptides](#)
- [Dot Blot](#)
- [Immunohistochemistry](#)
- [Immunofluorescence](#)
- [Immunoprecipitation](#)
- [Flow Cytometry](#)
- [Cell Culture](#)

Goat Anti-CD11A / integrin alpha L Antibody - Images



AF1212a (0.5 µg/ml) staining of Human Spleen lysate (35 µg protein in RIPA buffer). Primary incubation was 1 hour. Detected by chemiluminescence.



AF1212a (3.8 µg/ml) staining of paraffin embedded Human Spleen. Steamed antigen retrieval with citrate buffer pH 6, AP-staining.

Goat Anti-CD11A / integrin alpha L Antibody - Background

ITGAL encodes the integrin alpha L chain. Integrins are heterodimeric integral membrane proteins composed of an alpha chain and a beta chain. This I-domain containing alpha integrin combines with the beta 2 chain (ITGB2) to form the integrin lymphocyte function-associated antigen-1 (LFA-1), which is expressed on all leukocytes. LFA-1 plays a central role in leukocyte intercellular adhesion through interactions with its ligands, ICAMs 1-3 (intercellular adhesion molecules 1 through 3), and also functions in lymphocyte costimulatory signaling. Two transcript variants encoding different isoforms have been found for this gene.

Goat Anti-CD11A / integrin alpha L Antibody - References

Variation at the NFATC2 Locus Increases the Risk of Thiazolinedione-Induced Edema in the Diabetes REduction Assessment with ramipril and rosiglitazone Medication (DREAM) Study. Bailey SD, et al. Diabetes Care, 2010 Jul 13. PMID 20628086.

Mesenchymal stem cells inhibit human Th17 cell differentiation and function and induce a T regulatory cell phenotype. Ghannam S, et al. J Immunol, 2010 Jul 1. PMID 20511548.

Rolling on E- or P-selectin induces the extended but not high-affinity conformation of LFA-1 in neutrophils. Kuwano Y, et al. Blood, 2010 Jul 29. PMID 20445017.

Genetic variation in 3-hydroxy-3-methylglutaryl CoA reductase modifies the chemopreventive activity of statins for colorectal cancer. Lipkin SM, et al. Cancer Prev Res (Phila), 2010 May. PMID 20403997.

A transmembrane polar interaction is involved in the functional regulation of integrin alpha L beta 2. Vararattanavech A, et al. J Mol Biol, 2010 May 14. PMID 20338181.