

Goat Anti-CDK10 / PISSLRE Antibody
Peptide-affinity purified goat antibody
Catalog # AF1221a**Specification**

Goat Anti-CDK10 / PISSLRE Antibody - Product Information

Application	WB, E
Primary Accession	Q15131
Other Accession	NP_443714 , 8558
Reactivity	Human
Host	Goat
Clonality	Polyclonal
Concentration	100ug/200ul
Isotype	IgG
Calculated MW	41038

Goat Anti-CDK10 / PISSLRE Antibody - Additional Information**Gene ID** 8558**Other Names**

Cyclin-dependent kinase 10, 2.7.11.22, Cell division protein kinase 10, Serine/threonine-protein kinase PISSLRE, CDK10

Dilution

WB~~1:1000

E~~N/A

Format

0.5 mg IgG/ml in Tris saline (20mM Tris pH7.3, 150mM NaCl), 0.02% sodium azide, with 0.5% bovine serum albumin

Storage

Maintain refrigerated at 2-8°C for up to 6 months. For long term storage store at -20°C in small aliquots to prevent freeze-thaw cycles.

Precautions

Goat Anti-CDK10 / PISSLRE Antibody is for research use only and not for use in diagnostic or therapeutic procedures.

Goat Anti-CDK10 / PISSLRE Antibody - Protein Information**Name** CDK10**Function**

Cyclin-dependent kinase that phosphorylates the transcription factor ETS2 (in vitro) and positively controls its proteasomal degradation (in cells) (PubMed:<a

<http://www.uniprot.org/citations/24218572>). Involved in the regulation of actin cytoskeleton organization through the phosphorylation of actin dynamics regulators such as PKN2. Is a negative regulator of ciliogenesis through phosphorylation of PKN2 and promotion of RhoA signaling (PubMed: <http://www.uniprot.org/citations/27104747>).

Cellular Location

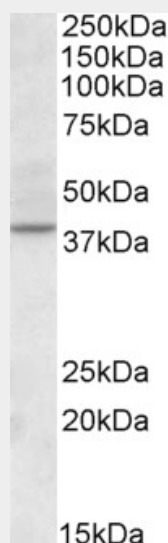
Cytoplasm, cytoskeleton, cilium basal body

Goat Anti-CDK10 / PISSLRE Antibody - Protocols

Provided below are standard protocols that you may find useful for product applications.

- [Western Blot](#)
- [Blocking Peptides](#)
- [Dot Blot](#)
- [Immunohistochemistry](#)
- [Immunofluorescence](#)
- [Immunoprecipitation](#)
- [Flow Cytometry](#)
- [Cell Culture](#)

Goat Anti-CDK10 / PISSLRE Antibody - Images



AF1221a (2 µg/ml) staining of Human Kidney lysate (35 µg protein in RIPA buffer). Primary incubation was 1 hour. Detected by chemiluminescence.

Goat Anti-CDK10 / PISSLRE Antibody - Background

The protein encoded by this gene belongs to the CDK subfamily of the Ser/Thr protein kinase family. The CDK subfamily members are highly similar to the gene products of *S. cerevisiae* cdc28, and *S. pombe* cdc2, and are known to be essential for cell cycle progression. This kinase has been shown to play a role in cellular proliferation and its function is limited to cell cycle G2-M phase. Multiple transcript variants encoding different isoforms have been found for this gene.

Goat Anti-CDK10 / PISSLRE Antibody - References

CDK10 is not a target for aberrant DNA methylation in breast cancer. Heller G, et al. Anticancer Res, 2009 Oct. PMID 19846932.

Genome-wide association study identifies three loci associated with melanoma risk. Bishop DT, et al. Nat Genet, 2009 Aug. PMID 19578364.

A genome-wide association study identifies novel alleles associated with hair color and skin pigmentation. Han J, et al. PLoS Genet, 2008 May 16. PMID 18483556.

Identification of CDK10 as an important determinant of resistance to endocrine therapy for breast cancer. Iorns E, et al. Cancer Cell, 2008 Feb. PMID 18242510.

Proteomics analysis of protein kinases by target class-selective prefractionation and tandem mass spectrometry. Wissing J, et al. Mol Cell Proteomics, 2007 Mar. PMID 17192257.