

**Goat Anti-CHFR Antibody**  
**Peptide-affinity purified goat antibody**  
**Catalog # AF1236a****Specification**

---

**Goat Anti-CHFR Antibody - Product Information**

Application	IHC, E
Primary Accession	<a href="#">Q96EP1</a>
Other Accession	<a href="#">NP_001154819</a> , <a href="#">55743</a> , <a href="#">231600 (mouse)</a> , <a href="#">288734 (rat)</a>
Reactivity	Human
Predicted	Mouse, Rat
Host	Goat
Clonality	Polyclonal
Concentration	100ug/200ul
Isotype	IgG
Calculated MW	73386

**Goat Anti-CHFR Antibody - Additional Information****Gene ID** 55743**Other Names**

E3 ubiquitin-protein ligase CHFR, 6.3.2.-, Checkpoint with forkhead and RING finger domains protein, RING finger protein 196, CHFR, RNF196

**Dilution**

IHC~~1:100~500

E~~N/A

**Format**

0.5 mg IgG/ml in Tris saline (20mM Tris pH7.3, 150mM NaCl), 0.02% sodium azide, with 0.5% bovine serum albumin

**Storage**

Maintain refrigerated at 2-8°C for up to 6 months. For long term storage store at -20°C in small aliquots to prevent freeze-thaw cycles.

**Precautions**

Goat Anti-CHFR Antibody is for research use only and not for use in diagnostic or therapeutic procedures.

**Goat Anti-CHFR Antibody - Protein Information****Name** CHFR**Synonyms** RNF196

**Function**

E3 ubiquitin-protein ligase that functions in the antephasis checkpoint by actively delaying passage into mitosis in response to microtubule poisons. Acts in early prophase before chromosome condensation, when the centrosome move apart from each other along the periphery of the nucleus. Probably involved in signaling the presence of mitotic stress caused by microtubule poisons by mediating the 'Lys- 48'-linked ubiquitination of target proteins, leading to their degradation by the proteasome. Promotes the ubiquitination and subsequent degradation of AURKA and PLK1. Probably acts as a tumor suppressor, possibly by mediating the polyubiquitination of HDAC1, leading to its degradation. May also promote the formation of 'Lys-63'- linked polyubiquitin chains and functions with the specific ubiquitin- conjugating UBC13-MMS2 (UBE2N-UBE2V2) heterodimer. Substrates that are polyubiquitinated at 'Lys-63' are usually not targeted for degradation, but are rather involved in signaling cellular stress.

**Cellular Location**

Nucleus, PML body

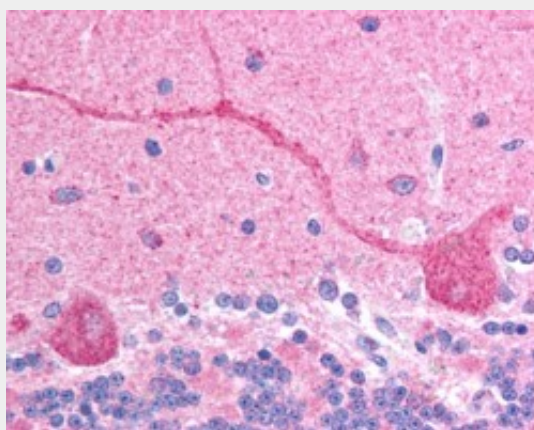
**Tissue Location**

Ubiquitous..

**Goat Anti-CHFR Antibody - Protocols**

Provided below are standard protocols that you may find useful for product applications.

- [Western Blot](#)
- [Blocking Peptides](#)
- [Dot Blot](#)
- [Immunohistochemistry](#)
- [Immunofluorescence](#)
- [Immunoprecipitation](#)
- [Flow Cytometry](#)
- [Cell Culture](#)

**Goat Anti-CHFR Antibody - Images**

AF1236a (2.5 µg/ml) staining of paraffin embedded human brain (cerebellum). Steamed antigen retrieval with citrate buffer pH 6, AP-staining.

**Goat Anti-CHFR Antibody - References**

CHFR functions as a ubiquitin ligase for HLTF to regulate its stability and functions. Kim JM, et al. Biochem Biophys Res Commun, 2010 May 14. PMID 20388495.

Aberrant gene methylation in the peritoneal fluid is a risk factor predicting peritoneal recurrence in gastric cancer. Hiraki M, et al. World J Gastroenterol, 2010 Jan 21. PMID 20082478.

Aberrant promoter hypermethylation of the CHFR gene in oral squamous cell carcinomas. Baba S, et al. Oncol Rep, 2009 Nov. PMID 19787237.

CHFR promoter hypermethylation and reduced CHFR mRNA expression in ovarian cancer. Gao Y, et al. Int J Biol Markers, 2009 Apr-Jun. PMID 19634111.

Novel susceptibility loci for second primary tumors/recurrence in head and neck cancer patients: large-scale evaluation of genetic variants. Wu X, et al. Cancer Prev Res (Phila), 2009 Jul. PMID 19584075.