

Goat Anti-CRP2 / CSRP2 Antibody
Peptide-affinity purified goat antibody
Catalog # AF1278a**Specification**

Goat Anti-CRP2 / CSRP2 Antibody - Product Information

Application	WB, IHC, E
Primary Accession	Q16527
Other Accession	NP_001312 , 1466 , 13008 (mouse)
Reactivity	Human, Mouse, Rat
Predicted	Horse
Host	Goat
Clonality	Polyclonal
Concentration	100ug/200ul
Isotype	IgG
Calculated MW	20954

Goat Anti-CRP2 / CSRP2 Antibody - Additional Information**Gene ID** 1466**Other Names**

Cysteine and glycine-rich protein 2, Cysteine-rich protein 2, CRP2, LIM domain only protein 5, LMO-5, Smooth muscle cell LIM protein, SmlLIM, CSRP2, LMO5, SMLIM

DilutionWB~~1:1000
IHC~~1:100~500
E~~N/A**Format**

0.5 mg IgG/ml in Tris saline (20mM Tris pH7.3, 150mM NaCl), 0.02% sodium azide, with 0.5% bovine serum albumin

Storage

Maintain refrigerated at 2-8°C for up to 6 months. For long term storage store at -20°C in small aliquots to prevent freeze-thaw cycles.

Precautions

Goat Anti-CRP2 / CSRP2 Antibody is for research use only and not for use in diagnostic or therapeutic procedures.

Goat Anti-CRP2 / CSRP2 Antibody - Protein Information**Name** CSRP2**Synonyms** LMO5, SMLIM

Function

Drastically down-regulated in response to PDGF-BB or cell injury, that promote smooth muscle cell proliferation and dedifferentiation. Seems to play a role in the development of the embryonic vascular system.

Cellular Location

Nucleus.

Tissue Location

Highly expressed in the aorta, but not in heart and skeletal muscle

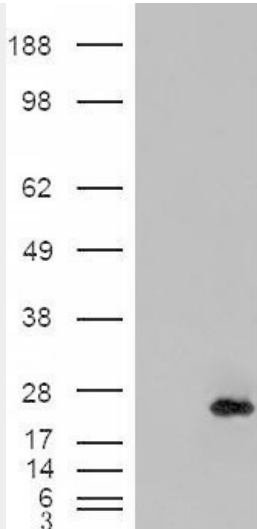
Goat Anti-CRP2 / CSRP2 Antibody - Protocols

Provided below are standard protocols that you may find useful for product applications.

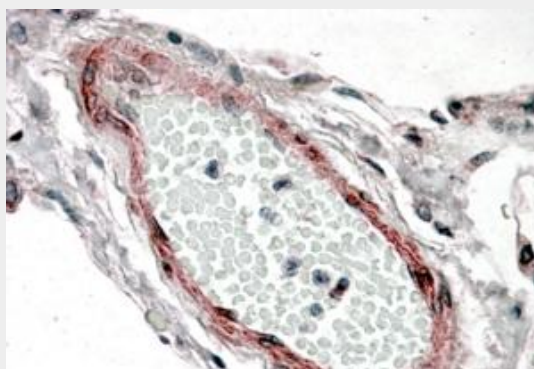
- [Western Blot](#)
- [Blocking Peptides](#)
- [Dot Blot](#)
- [Immunohistochemistry](#)
- [Immunofluorescence](#)
- [Immunoprecipitation](#)
- [Flow Cytometry](#)
- [Cell Culture](#)

Goat Anti-CRP2 / CSRP2 Antibody - Images

AF1278a (0.1 µg/ml) staining of mouse kidney lysate (35 µg protein in RIPA buffer). Primary incubation was 1 hour. Detected by chemiluminescence.



HEK293 overexpressing CRP2 (RC201565) and probed with AF1278a (mock transfection in first lane), tested by Origene.



AF1278a (3.8 µg/ml) staining of paraffin embedded Human Lung. Steamed antigen retrieval with citrate buffer pH 6, AP-staining.

Goat Anti-CRP2 / CSRP2 Antibody - Background

CSRP2 is a member of the CSRP family of genes, encoding a group of LIM domain proteins, which may be involved in regulatory processes important for development and cellular differentiation. CRP2 contains two copies of the cysteine-rich amino acid sequence motif (LIM) with putative zinc-binding activity, and may be involved in regulating ordered cell growth. Other genes in the family include CSRP1 and CSRP3.

Goat Anti-CRP2 / CSRP2 Antibody - References

The status, quality, and expansion of the NIH full-length cDNA project: the Mammalian Gene Collection (MGC). Gerhard DS, et al. Genome Res, 2004 Oct. PMID 15489334.
Interleukin-10 activation of the interleukin-10E1 pathway and tissue inhibitor of metalloproteinase-1 expression is enhanced by proteasome inhibitors in primary prostate tumor lines. Stearns ME, et al. Mol Cancer Res, 2003 Jul. PMID 12861049.
IL-10/IL-10 receptor signaling regulates TIMP-1 expression in primary human prostate tumor lines. Wang M, et al. Cancer Biol Ther, 2002 Sep-Oct. PMID 12496489.
Generation and initial analysis of more than 15,000 full-length human and mouse cDNA sequences. Strausberg RL, et al. Proc Natl Acad Sci U S A, 2002 Dec 24. PMID 12477932.
LIM-domain protein cysteine- and glycine-rich protein 2 (CRP2) is a novel marker of hepatic stellate cells and binding partner of the protein inhibitor of activated STAT1. Weiskirchen R, et al. Biochem J, 2001 Nov 1. PMID 11672422.