

Goat Anti-CYBR / PSCDBP Antibody
Peptide-affinity purified goat antibody
Catalog # AF1289a**Specification**

Goat Anti-CYBR / PSCDBP Antibody - Product Information

Application	WB, E
Primary Accession	O60759
Other Accession	NP_004279 , 9595
Reactivity	Human
Predicted	Pig, Dog
Host	Goat
Clonality	Polyclonal
Concentration	100ug/200ul
Isotype	IgG
Calculated MW	40010

Goat Anti-CYBR / PSCDBP Antibody - Additional Information**Gene ID** 9595**Other Names**

Cytohesin-interacting protein, Cytohesin binder and regulator, CYBR, Cytohesin-associated scaffolding protein, CASP, Cytohesin-binding protein HE, Cbp HE, Pleckstrin homology Sec7 and coiled-coil domains-binding protein, CYTIP, PSCDBP

Dilution

WB~~1:1000

E~~N/A

Format

0.5 mg IgG/ml in Tris saline (20mM Tris pH7.3, 150mM NaCl), 0.02% sodium azide, with 0.5% bovine serum albumin

Storage

Maintain refrigerated at 2-8°C for up to 6 months. For long term storage store at -20°C in small aliquots to prevent freeze-thaw cycles.

Precautions

Goat Anti-CYBR / PSCDBP Antibody is for research use only and not for use in diagnostic or therapeutic procedures.

Goat Anti-CYBR / PSCDBP Antibody - Protein Information**Name** CYTIP**Synonyms** PSCDBP

Function

By its binding to cytohesin-1 (CYTH1), it modifies activation of ARFs by CYTH1 and its precise function may be to sequester CYTH1 in the cytoplasm.

Cellular Location

Cytoplasm. Early endosome. Note=Recruited from the cytosol to endosomes by SNX27

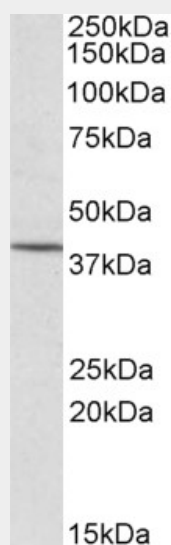
Tissue Location

Expressed in lymph nodes, thymus, spleen, lung, peripheral blood leukocytes and bone marrow

Goat Anti-CYBR / PSCDBP Antibody - Protocols

Provided below are standard protocols that you may find useful for product applications.

- [Western Blot](#)
- [Blocking Peptides](#)
- [Dot Blot](#)
- [Immunohistochemistry](#)
- [Immunofluorescence](#)
- [Immunoprecipitation](#)
- [Flow Cytometry](#)
- [Cell Culture](#)

Goat Anti-CYBR / PSCDBP Antibody - Images

AF1289a (1.0 µg/ml) staining of MOLT4 (35 µg protein in RIPA buffer). Primary incubation was 1 hour. Detected by chemiluminescence.

Goat Anti-CYBR / PSCDBP Antibody - Background

The protein encoded by this gene contains 2 leucine zipper domains and a putative C-terminal nuclear targeting signal, but does not have any hydrophobic regions. This protein is expressed weakly in resting NK and T cells. The encoded protein modulates the activation of ARF genes by CYTH1. This protein interacts with CYTH1 and SNX27 proteins and may act to sequester CYTH1 protein in the cytoplasm.

Goat Anti-CYBR / PSCDBP Antibody - References

LFA-1 activity state on dendritic cells regulates contact duration with T cells and promotes T-cell priming. Balkow S, et al. Blood, 2010 Sep 16. PMID 20530790.

Personalized smoking cessation: interactions between nicotine dose, dependence and quit-success genotype score. Rose JE, et al. Mol Med, 2010 Jul-Aug. PMID 20379614.

Cybr, CYTIP or CASP: an attempt to pinpoint a molecule's functions and names. Heufler C, et al. Immunobiology, 2008. PMID 18926288.

Toward a confocal subcellular atlas of the human proteome. Barbe L, et al. Mol Cell Proteomics, 2008 Mar. PMID 18029348.

Sorting nexin 27 interacts with the Cytohesin associated scaffolding protein (CASP) in lymphocytes. MacNeil AJ, et al. Biochem Biophys Res Commun, 2007 Aug 10. PMID 17577583.