

Goat Anti-DDAH1 Antibody
Peptide-affinity purified goat antibody
Catalog # AF1308a**Specification**

Goat Anti-DDAH1 Antibody - Product Information

Application	WB, E
Primary Accession	O94760
Other Accession	NP_001127917 , 23576
Reactivity	Human
Host	Goat
Clonality	Polyclonal
Concentration	100ug/200ul
Isotype	IgG
Calculated MW	31122

Goat Anti-DDAH1 Antibody - Additional Information**Gene ID** 23576**Other Names**

N(G), N(G)-dimethylarginine dimethylaminohydrolase 1, DDAH-1, Dimethylarginine dimethylaminohydrolase 1, 3.5.3.18, DDAH1, Dimethylargininase-1, DDAH1, DDAH

Dilution

WB~~1:1000

E~~N/A

Format

0.5 mg IgG/ml in Tris saline (20mM Tris pH7.3, 150mM NaCl), 0.02% sodium azide, with 0.5% bovine serum albumin

Storage

Maintain refrigerated at 2-8°C for up to 6 months. For long term storage store at -20°C in small aliquots to prevent freeze-thaw cycles.

Precautions

Goat Anti-DDAH1 Antibody is for research use only and not for use in diagnostic or therapeutic procedures.

Goat Anti-DDAH1 Antibody - Protein Information**Name** DDAH1 ([HGNC:2715](#))**Synonyms** DDAH**Function**

Hydrolyzes N(G),N(G)-dimethyl-L-arginine (ADMA) and N(G)- monomethyl-L-arginine (MMA) which act as inhibitors of NOS. Has therefore a role in the regulation of nitric oxide generation.

Tissue Location

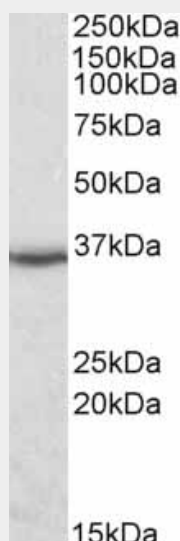
Detected in brain, liver, kidney and pancreas, and at low levels in skeletal muscle.

Goat Anti-DDAH1 Antibody - Protocols

Provided below are standard protocols that you may find useful for product applications.

- [Western Blot](#)
- [Blocking Peptides](#)
- [Dot Blot](#)
- [Immunohistochemistry](#)
- [Immunofluorescence](#)
- [Immunoprecipitation](#)
- [Flow Cytometry](#)
- [Cell Culture](#)

Goat Anti-DDAH1 Antibody - Images



AF1308a (0.1 µg/ml) staining of Human Kidney lysate (35 µg protein in RIPA buffer). Primary incubation was 1 hour. Detected by chemiluminescence.

Goat Anti-DDAH1 Antibody - Background

This gene belongs to the dimethylarginine dimethylaminohydrolase (DDAH) gene family. The encoded enzyme plays a role in nitric oxide generation by regulating cellular concentrations of methylarginines, which in turn inhibit nitric oxide synthase activity.

Goat Anti-DDAH1 Antibody - References

Variation at the NFATC2 Locus Increases the Risk of Thiazolinedione-Induced Edema in the Diabetes REduction Assessment with ramipril and rosiglitazone Medication (DREAM) Study. Bailey SD, et al. Diabetes Care, 2010 Jul 13. PMID 20628086.
Sex-specific proteome differences in the anterior cingulate cortex of schizophrenia. Martins-de-Souza D, et al. J Psychiatr Res, 2010 Apr 8. PMID 20381070.

Personalized smoking cessation: interactions between nicotine dose, dependence and quit-success genotype score. Rose JE, et al. Mol Med, 2010 Jul-Aug. PMID 20379614.

Sequence variation in DDAH1 and DDAH2 genes is strongly and additively associated with serum ADMA concentrations in individuals with type 2 diabetes. Abhary S, et al. PLoS One, 2010 Mar 1. PMID 20209122.

A novel loss-of-function DDAH1 promoter polymorphism is associated with increased susceptibility to thrombosis stroke and coronary heart disease. Ding H, et al. Circ Res, 2010 Apr 2. PMID 20167924.