

Goat Anti-DUSP8 / HVH5 Antibody
Peptide-affinity purified goat antibody
Catalog # AF1346a**Specification**

Goat Anti-DUSP8 / HVH5 Antibody - Product Information

Application	WB, E
Primary Accession	Q13202
Other Accession	NP_004411 , 1850 , 18218 (mouse)
Reactivity	Human
Predicted	Mouse, Rat
Host	Goat
Clonality	Polyclonal
Concentration	100ug/200ul
Isotype	IgG
Calculated MW	65827

Goat Anti-DUSP8 / HVH5 Antibody - Additional Information**Gene ID** 1850**Other Names**

Dual specificity protein phosphatase 8, 3.1.3.16, 3.1.3.48, Dual specificity protein phosphatase hVH-5, DUSP8, C11orf81, VH5

Dilution

WB~~1:1000

E~~N/A

Format

0.5 mg IgG/ml in Tris saline (20mM Tris pH7.3, 150mM NaCl), 0.02% sodium azide, with 0.5% bovine serum albumin

Storage

Maintain refrigerated at 2-8°C for up to 6 months. For long term storage store at -20°C in small aliquots to prevent freeze-thaw cycles.

Precautions

Goat Anti-DUSP8 / HVH5 Antibody is for research use only and not for use in diagnostic or therapeutic procedures.

Goat Anti-DUSP8 / HVH5 Antibody - Protein Information**Name** DUSP8**Synonyms** C11orf81, VH5

Function

Has phosphatase activity with synthetic phosphatase substrates and negatively regulates mitogen-activated protein kinase activity, presumably by catalysing their dephosphorylation. Expected to display protein phosphatase activity toward phosphotyrosine, phosphoserine and phosphothreonine residues.

Cellular Location

Cytoplasm {ECO:0000250|UniProtKB:O09112}. Nucleus {ECO:0000250|UniProtKB:O09112}

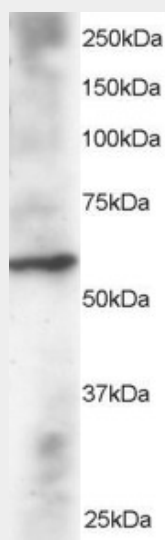
Tissue Location

Abundant in brain, heart and skeletal muscle.

Goat Anti-DUSP8 / HVH5 Antibody - Protocols

Provided below are standard protocols that you may find useful for product applications.

- [Western Blot](#)
- [Blocking Peptides](#)
- [Dot Blot](#)
- [Immunohistochemistry](#)
- [Immunofluorescence](#)
- [Immunoprecipitation](#)
- [Flow Cytometry](#)
- [Cell Culture](#)

Goat Anti-DUSP8 / HVH5 Antibody - Images

AF1346a staining (2 µg/ml) of Human Heart lysate (RIPA buffer, 30 µg total protein per lane). Primary incubated for 12 hour. Detected by western blot using chemiluminescence.

Goat Anti-DUSP8 / HVH5 Antibody - Background

The protein encoded by this gene is a member of the dual specificity protein phosphatase subfamily. These phosphatases inactivate their target kinases by dephosphorylating both the phosphoserine/threonine and phosphotyrosine residues. They negatively regulate members of the mitogen-activated protein (MAP) kinase superfamily (MAPK/ERK, SAPK/JNK, p38), which is associated with cellular proliferation and differentiation. Different members of the family of dual specificity

phosphatases show distinct substrate specificities for various MAP kinases, different tissue distribution and subcellular localization, and different modes of inducibility of their expression by extracellular stimuli. This gene product inactivates SAPK/JNK and p38, is expressed predominantly in the adult brain, heart, and skeletal muscle, is localized in the cytoplasm, and is induced by nerve growth factor and insulin. An intronless pseudogene for DUSP8 is present on chromosome 10q11.2.

Goat Anti-DUSP8 / HVH5 Antibody - References

Identification of a transcriptionally active hVH-5 pseudogene on 10q22.2. Berger IR, et al. Cancer Genet Cytogenet, 2005 Jun. PMID 15899389.
Investigation of DUSP8 and CALCA in alcohol dependence. Hink RL, et al. Addict Biol, 2003 Sep. PMID 13129832.
Generation and initial analysis of more than 15,000 full-length human and mouse cDNA sequences. Strausberg RL, et al. Proc Natl Acad Sci U S A, 2002 Dec 24. PMID 12477932.
Genomic organization and chromosomal localization of a member of the MAP kinase phosphatase gene family to human chromosome 11p15.5 and a pseudogene to 10q11.2. Nesbit MA, et al. Genomics, 1997 Jun 1. PMID 9192849.
Normalization and subtraction: two approaches to facilitate gene discovery. Bonaldo MF, et al. Genome Res, 1996 Sep. PMID 8889548.