

Goat Anti-ELMO3 Antibody
Peptide-affinity purified goat antibody
Catalog # AF1365a**Specification**

Goat Anti-ELMO3 Antibody - Product Information

Application	WB, IHC, E
Primary Accession	Q96BJ8
Other Accession	NP_078988 , 79767
Reactivity	Human
Predicted	Dog
Host	Goat
Clonality	Polyclonal
Concentration	100ug/200ul
Isotype	IgG
Calculated MW	81467

Goat Anti-ELMO3 Antibody - Additional Information**Gene ID** 79767**Other Names**

Engulfment and cell motility protein 3, ELMO3

Dilution

WB~~1:1000

IHC~~1:100~500

E~~N/A

Format

0.5 mg IgG/ml in Tris saline (20mM Tris pH7.3, 150mM NaCl), 0.02% sodium azide, with 0.5% bovine serum albumin

Storage

Maintain refrigerated at 2-8°C for up to 6 months. For long term storage store at -20°C in small aliquots to prevent freeze-thaw cycles.

Precautions

Goat Anti-ELMO3 Antibody is for research use only and not for use in diagnostic or therapeutic procedures.

Goat Anti-ELMO3 Antibody - Protein Information**Name** ELMO3**Function**

Involved in cytoskeletal rearrangements required for phagocytosis of apoptotic cells and cell

motility. Acts in association with DOCK1 and CRK. Was initially proposed to be required in complex with DOCK1 to activate Rac Rho small GTPases. May enhance the guanine nucleotide exchange factor (GEF) activity of DOCK1 (By similarity).

Cellular Location

Cytoplasm.

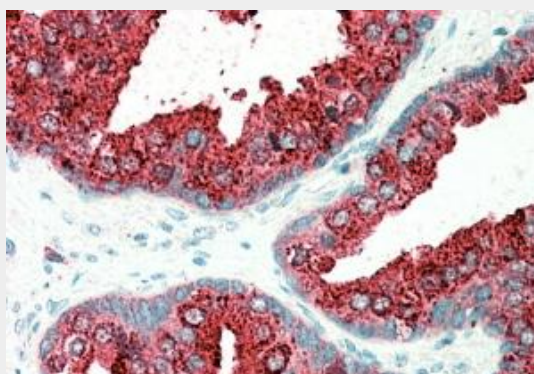
Goat Anti-ELMO3 Antibody - Protocols

Provided below are standard protocols that you may find useful for product applications.

- [Western Blot](#)
- [Blocking Peptides](#)
- [Dot Blot](#)
- [Immunohistochemistry](#)
- [Immunofluorescence](#)
- [Immunoprecipitation](#)
- [Flow Cytometry](#)
- [Cell Culture](#)

Goat Anti-ELMO3 Antibody - Images

AF1365a staining (0.1 μ g/ml) of Human Brain (Hippocampus) lysate (RIPA buffer, 35 μ g total protein per lane). Primary incubated for 1 hour. Detected by chemiluminescence.



AF1365a (5 µg/ml) staining of paraffin embedded Human Prostate. Steamed antigen retrieval with citrate buffer pH 6, AP-staining.

Goat Anti-ELMO3 Antibody - Background

The protein encoded by this gene is similar to a *C. elegans* protein that functions in phagocytosis of apoptotic cells and in cell migration. Other members of this small family of engulfment and cell motility (ELMO) proteins have been shown to interact with the dedicator of cyto-kinesis 1 protein to promote phagocytosis and effect cell shape changes.

Goat Anti-ELMO3 Antibody - References

Control of intestinal promoter activity of the cellular migratory regulator gene ELMO3 by CDX2 and SP1. Coskun M, et al. *J Cell Biochem*, 2010 Apr 15. PMID 20127720.

Diversification of transcriptional modulation: large-scale identification and characterization of putative alternative promoters of human genes. Kimura K, et al. *Genome Res*, 2006 Jan. PMID 16344560.

The status, quality, and expansion of the NIH full-length cDNA project: the Mammalian Gene Collection (MGC). Gerhard DS, et al. *Genome Res*, 2004 Oct. PMID 15489334.

Complete sequencing and characterization of 21,243 full-length human cDNAs. Ota T, et al. *Nat Genet*, 2004 Jan. PMID 14702039.

Generation and initial analysis of more than 15,000 full-length human and mouse cDNA sequences. Strausberg RL, et al. *Proc Natl Acad Sci U S A*, 2002 Dec 24. PMID 12477932.