

Goat Anti-ESRRG Antibody
Peptide-affinity purified goat antibody
Catalog # AF1383a**Specification**

Goat Anti-ESRRG Antibody - Product Information

Application	WB, E
Primary Accession	P62508
Other Accession	NP_996318 , 2104 , 26381 (mouse)
Reactivity	Human
Predicted	Mouse, Dog
Host	Goat
Clonality	Polyclonal
Concentration	100ug/200ul
Isotype	IgG
Calculated MW	51306

Goat Anti-ESRRG Antibody - Additional Information**Gene ID** 2104**Other Names**

Estrogen-related receptor gamma, ERR gamma-2, Estrogen receptor-related protein 3, Nuclear receptor subfamily 3 group B member 3, ESRRG, ERR3, ERRG2, KIAA0832, NR3B3

Dilution

WB~~1:1000

E~~N/A

Format

0.5 mg IgG/ml in Tris saline (20mM Tris pH7.3, 150mM NaCl), 0.02% sodium azide, with 0.5% bovine serum albumin

Storage

Maintain refrigerated at 2-8°C for up to 6 months. For long term storage store at -20°C in small aliquots to prevent freeze-thaw cycles.

Precautions

Goat Anti-ESRRG Antibody is for research use only and not for use in diagnostic or therapeutic procedures.

Goat Anti-ESRRG Antibody - Protein Information**Name** ESRRG**Synonyms** ERR3, ERRG2, KIAA0832, NR3B3

Function

Orphan receptor that acts as a transcription activator in the absence of bound ligand. Binds specifically to an estrogen response element and activates reporter genes controlled by estrogen response elements (By similarity). Induces the expression of PERM1 in the skeletal muscle.

Cellular Location

Nucleus.

Tissue Location

Expressed in the heart, kidney, brain, lung, bone marrow, adrenal gland, trachea, spinal cord and thyroid gland

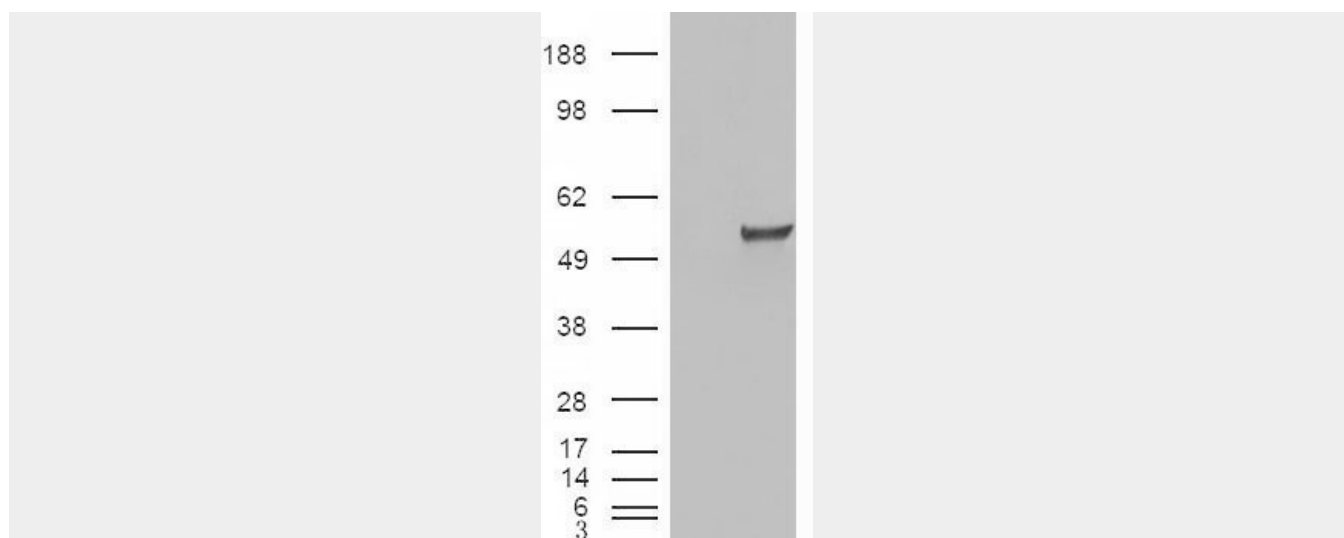
Goat Anti-ESRRG Antibody - Protocols

Provided below are standard protocols that you may find useful for product applications.

- [Western Blot](#)
- [Blocking Peptides](#)
- [Dot Blot](#)
- [Immunohistochemistry](#)
- [Immunofluorescence](#)
- [Immunoprecipitation](#)
- [Flow Cytometry](#)
- [Cell Culture](#)

Goat Anti-ESRRG Antibody - Images

AF1383a (0.2 µg/ml) staining of Human Breast lysate (35 µg protein in RIPA buffer). Primary incubation was 1 hour. Detected by chemiluminescence.



HEK293 overexpressing ESRRG (RC218233) and probed with AF1383a (mock transfection in first lane), tested by Origene.

Goat Anti-ESRRG Antibody - References

Personalized smoking cessation: interactions between nicotine dose, dependence and quit-success genotype score. Rose JE, et al. Mol Med, 2010 Jul-Aug. PMID 20379614.

Identification and characterization of estrogen receptor-related receptor alpha and gamma in human glioma and astrocytoma cells. Gandhari MK, et al. Mol Cell Endocrinol, 2010 Feb 5. PMID 19822186.

Association with replication between estrogen-related receptor gamma (ESRRgamma) polymorphisms and bone phenotypes in women of European ancestry. Elfassihi L, et al. J Bone Miner Res, 2010 Apr. PMID 19821770.

Transcriptional corepressor SMILE recruits SIRT1 to inhibit nuclear receptor estrogen receptor-related receptor gamma transactivation. Xie YB, et al. J Biol Chem, 2009 Oct 16. PMID 19690166.

Genetic polymorphisms of estrogen metabolizing enzyme and breast cancer risk in Thai women. Sangrajrang S, et al. Int J Cancer, 2009 Aug 15. PMID 19415745.