

Goat Anti-Flotillin 1 Antibody
Peptide-affinity purified goat antibody
Catalog # AF1421a**Specification**

Goat Anti-Flotillin 1 Antibody - Product Information

Application	WB, IHC, E
Primary Accession	O75955
Other Accession	NP_005794 , 10211 , 14251 (mouse)
Reactivity	Human
Predicted	Pig, Dog
Host	Goat
Clonality	Polyclonal
Concentration	100ug/200ul
Isotype	IgG
Calculated MW	47355

Goat Anti-Flotillin 1 Antibody - Additional Information**Gene ID** 10211**Other Names**

Flotillin-1, FLOT1

Dilution

WB~~1:1000

IHC~~1:100~500

E~~N/A

Format

0.5 mg IgG/ml in Tris saline (20mM Tris pH7.3, 150mM NaCl), 0.02% sodium azide, with 0.5% bovine serum albumin

Storage

Maintain refrigerated at 2-8°C for up to 6 months. For long term storage store at -20°C in small aliquots to prevent freeze-thaw cycles.

Precautions

Goat Anti-Flotillin 1 Antibody is for research use only and not for use in diagnostic or therapeutic procedures.

Goat Anti-Flotillin 1 Antibody - Protein Information**Name** FLOT1**Function**

May act as a scaffolding protein within caveolar membranes, functionally participating in formation

of caveolae or caveolae-like vesicles.

Cellular Location

Cell membrane; Peripheral membrane protein. Endosome Membrane, caveola {ECO:0000250|UniProtKB:O08917}; Peripheral membrane protein {ECO:0000250|UniProtKB:O08917}. Melanosome. Membrane raft. Note=Identified by mass spectrometry in melanosome fractions from stage I to stage IV (PubMed:17081065) Membrane-associated protein of caveola (By similarity) {ECO:0000250|UniProtKB:O08917, ECO:0000269|PubMed:17081065}

Goat Anti-Flotillin 1 Antibody - Protocols

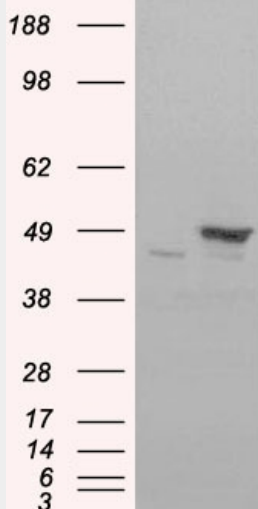
Provided below are standard protocols that you may find useful for product applications.

- [Western Blot](#)
- [Blocking Peptides](#)
- [Dot Blot](#)
- [Immunohistochemistry](#)
- [Immunofluorescence](#)
- [Immunoprecipitation](#)
- [Flow Cytometry](#)
- [Cell Culture](#)

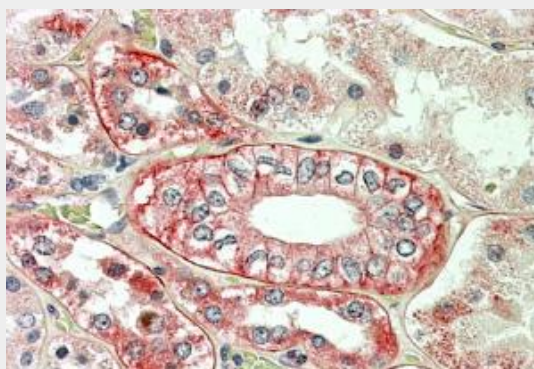
Goat Anti-Flotillin 1 Antibody - Images



AF1421a staining (0.3 μ g/ml) of H460 lysate (RIPA buffer, 35 μ g total protein per lane). Primary incubated for 1 hour. Detected by western blot using chemiluminescence.



HEK293 overexpressing FLOT1(RC200231) and probed with AF1421a (mock transfection in first lane), tested by Origene.



AF1421a (3.8 µg/ml) staining of paraffin embedded Human Kidney. Steamed antigen retrieval with citrate buffer pH 6, AP-staining.

Goat Anti-Flotillin 1 Antibody - Background

Caveolae are small domains on the inner cell membrane involved in vesicular trafficking and signal transduction. FLOT1 encodes a caveolae-associated, integral membrane protein. The function of flotillin 1 has not been determined.

Goat Anti-Flotillin 1 Antibody - References

Flotillins are involved in the polarization of primitive and mature hematopoietic cells. Rajendran L, et al. PLoS One, 2009 Dec 22. PMID 20027317.
High-density SNP screening of the major histocompatibility complex in systemic lupus erythematosus demonstrates strong evidence for independent susceptibility regions. Barcellos LF, et al. PLoS Genet, 2009 Oct. PMID 19851445.
The Mycobacterium bovis bacille Calmette-Guerin phagosome proteome. Lee BY, et al. Mol Cell Proteomics, 2010 Jan. PMID 19815536.
Flotillins interact with PSGL-1 in neutrophils and, upon stimulation, rapidly organize into membrane domains subsequently accumulating in the uropod. Rossy J, et al. PLoS One, 2009. PMID 19404397.
Protein delivery with transporters is mediated by caveolae rather than flotillin-dependent pathways. Sjölik P, et al. Bioconjug Chem, 2009 May 20. PMID 19348413.