

Goat Anti-FOXC2 Antibody
Peptide-affinity purified goat antibody
Catalog # AF1428a**Specification**

Goat Anti-FOXC2 Antibody - Product Information

Application	WB, E
Primary Accession	Q99958
Other Accession	NP_005242.1 , 2303 , 14234 (mouse)
Reactivity	Human
Predicted	Mouse, Rat, Dog
Host	Goat
Clonality	Polyclonal
Concentration	100ug/200ul
Isotype	IgG
Calculated MW	53719

Goat Anti-FOXC2 Antibody - Additional Information**Gene ID** 2303**Other Names**

Forkhead box protein C2, Forkhead-related protein FKHL14, Mesenchyme fork head protein 1, MFH-1 protein, Transcription factor FKH-14, FOXC2, FKHL14, MFH1

Dilution

WB~~1:1000

E~~N/A

Format

0.5 mg IgG/ml in Tris saline (20mM Tris pH7.3, 150mM NaCl), 0.02% sodium azide, with 0.5% bovine serum albumin

Storage

Maintain refrigerated at 2-8°C for up to 6 months. For long term storage store at -20°C in small aliquots to prevent freeze-thaw cycles.

Precautions

Goat Anti-FOXC2 Antibody is for research use only and not for use in diagnostic or therapeutic procedures.

Goat Anti-FOXC2 Antibody - Protein Information**Name** FOXC2**Synonyms** FKHL14, MFH1

Function

Transcriptional activator.

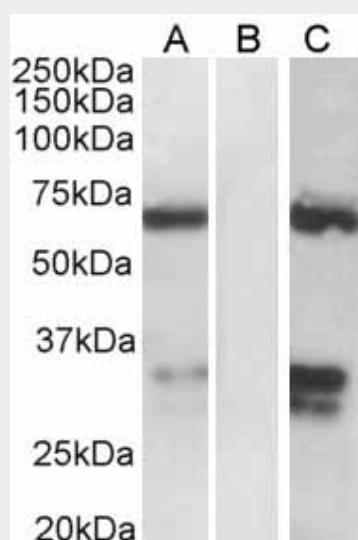
Cellular Location

Nucleus {ECO:0000255|PROSITE-ProRule:PRU00089, ECO:0000269|PubMed:23878394, ECO:0000269|PubMed:28179430}

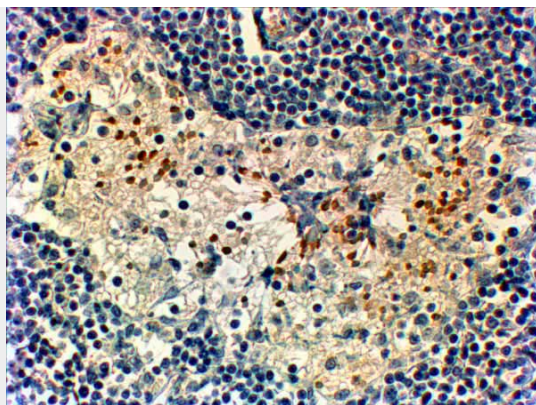
Goat Anti-FOXC2 Antibody - Protocols

Provided below are standard protocols that you may find useful for product applications.

- [Western Blot](#)
- [Blocking Peptides](#)
- [Dot Blot](#)
- [Immunohistochemistry](#)
- [Immunofluorescence](#)
- [Immunoprecipitation](#)
- [Flow Cytometry](#)
- [Cell Culture](#)

Goat Anti-FOXC2 Antibody - Images

AF1428a HEK293 lysate (10ug protein in RIPA buffer) over expressing Human FOXC2 with DYKDDDDK tag probed with (1.0ug/ml) in Lane A and probed with anti- DYKDDDDK Tag (1/1000) in lane C. Mock-transfected HEK293 probed with (1mg/ml) in Lane B. Prima



AF1428a (2 µg/ml) staining of paraffin embedded Human Breast cancer. Steamed antigen retrieval with Tris/EDTA buffer pH 9, HRP-staining. Data obtained from previous batch.

Goat Anti-FOXC2 Antibody - Background

This gene belongs to the forkhead family of transcription factors which is characterized by a distinct DNA-binding forkhead domain. The specific function of this gene has not yet been determined; however, it may play a role in the development of mesenchymal tissues.

Goat Anti-FOXC2 Antibody - References

Maternal genes and facial clefts in offspring: a comprehensive search for genetic associations in two population-based cleft studies from Scandinavia. Jugessur A, et al. PLoS One, 2010 Jul 9. PMID 20634891.

A novel missense mutation and two microrearrangements in the FOXC2 gene of three families with lymphedema-distichiasis syndrome. Fauret AL, et al. Lymphology, 2010 Mar. PMID 20552815.

Gestational diabetes mellitus shares polymorphisms of genes associated with insulin resistance and type 2 diabetes in the Greek population. Pappa KI, et al. Gynecol Endocrinol, 2010 Jun 14. PMID 20540670.

A case of lymphedema-distichiasis syndrome carrying a new de novo frameshift FOXC2 mutation. Fabretto A, et al. Ophthalmic Genet, 2010 Jun. PMID 20450314.

Lymphedema-distichiasis syndrome without FOXC2 mutation: evidence for chromosome 16 duplication upstream of FOXC2. Witte MH, et al. Lymphology, 2009 Dec. PMID 20218083.