

**Goat Anti-FOXL2 / BPES Antibody**  
**Peptide-affinity purified goat antibody**  
**Catalog # AF1432a****Specification**

---

**Goat Anti-FOXL2 / BPES Antibody - Product Information**

Application	WB, Pep-ELISA
Primary Accession	<a href="#">P58012</a>
Other Accession	<a href="#">NP_075555</a> , <a href="#">668</a> , <a href="#">26927 (mouse)</a>
Reactivity	Human, Mouse
Predicted	Rat
Host	Goat
Clonality	Polyclonal
Concentration	100ug/200ul
Isotype	IgG
Calculated MW	38772

**Goat Anti-FOXL2 / BPES Antibody - Additional Information****Gene ID** 668**Other Names**

Forkhead box protein L2, FOXL2

**Dilution**

WB~~1:1000

Pep-ELISA~~N/A

**Format**

0.5 mg IgG/ml in Tris saline (20mM Tris pH7.3, 150mM NaCl), 0.02% sodium azide, with 0.5% bovine serum albumin

**Storage**

Maintain refrigerated at 2-8°C for up to 6 months. For long term storage store at -20°C in small aliquots to prevent freeze-thaw cycles.

**Precautions**

Goat Anti-FOXL2 / BPES Antibody is for research use only and not for use in diagnostic or therapeutic procedures.

**Goat Anti-FOXL2 / BPES Antibody - Protein Information****Name** FOXL2**Function**

Transcriptional regulator. Critical factor essential for ovary differentiation and maintenance, and repression of the genetic program for somatic testis determination. Prevents trans- differentiation

of ovary to testis through transcriptional repression of the Sertoli cell-promoting gene SOX9 (By similarity). Has apoptotic activity in ovarian cells. Suppresses ESR1-mediated transcription of PTGS2/COX2 stimulated by tamoxifen (By similarity). Is a regulator of CYP19 expression (By similarity). Participates in SMAD3-dependent transcription of FST via the intronic SMAD-binding element (By similarity). Is a transcriptional repressor of STAR. Activates SIRT1 transcription under cellular stress conditions. Activates transcription of OSR2.

**Cellular Location**

Nucleus {ECO:0000255|PROSITE-ProRule:PRU00089, ECO:0000269|PubMed:19744555}

**Tissue Location**

In addition to its expression in the developing eyelid, it is transcribed very early in somatic cells of the developing gonad (before sex determination) and its expression persists in the follicular cells of the adult ovary

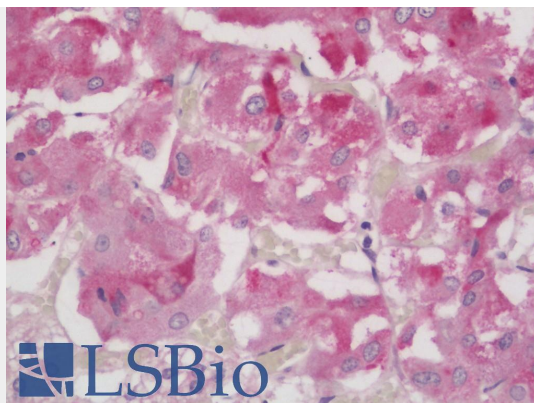
**Goat Anti-FOXL2 / BPES Antibody - Protocols**

Provided below are standard protocols that you may find useful for product applications.

- [Western Blot](#)
- [Blocking Peptides](#)
- [Dot Blot](#)
- [Immunohistochemistry](#)
- [Immunofluorescence](#)
- [Immunoprecipitation](#)
- [Flow Cytometry](#)
- [Cell Culture](#)

**Goat Anti-FOXL2 / BPES Antibody - Images**

AF1432a (0.3µg/ml) staining of Mouse Ovary lysate (35µg protein in RIPA buffer). Detected by chemiluminescence.



AF1432a (5µg/ml) staining of paraffin embedded Human Adrenal Gland. Steamed antigen retrieval with citrate buffer pH 6, AP-staining. **This data is from a previous batch, not on sale.**

#### **Goat Anti-FOXL2 / BPES Antibody - Background**

This gene encodes a forkhead transcription factor. The protein contains a fork-head DNA-binding domain and may play a role in ovarian development and function. Mutations in this gene are a cause of blepharophimosis syndrome and premature ovarian failure 3.

#### **Goat Anti-FOXL2 / BPES Antibody - References**

FOXL2 mutation in granulosa-cell tumours of the ovary. Kim T, et al. Histopathology, 2010 Feb. PMID 20459545.

Revisiting reproduction: What a difference a gene makes. Murphy BD. Nat Med, 2010 May. PMID 20448577.

FoxL2 is required for activin induction of the mouse and human follicle-stimulating hormone beta-subunit genes. Corpuz PS, et al. Mol Endocrinol, 2010 May. PMID 20233786.

Mutation analysis of FOXL2 gene in Chinese patients with premature ovarian failure. Ni F, et al. Gynecol Endocrinol, 2010 Apr. PMID 20222838.

FOXL2 interacts with steroidogenic factor-1 (SF-1) and represses SF-1-induced CYP17 transcription in granulosa cells. Park M, et al. Mol Endocrinol, 2010 May. PMID 20207836.