

Goat Anti-G6PD (aa 305 - 318) Antibody
Peptide-affinity purified goat antibody
Catalog # AF1453a**Specification**

Goat Anti-G6PD (aa 305 - 318) Antibody - Product Information

Application	WB, E
Primary Accession	P11413
Other Accession	NP_001035810 , 2539 , 14381 (mouse) , 24377 (rat)
Reactivity	Human
Predicted	Mouse, Rat, Dog
Host	Goat
Clonality	Polyclonal
Concentration	100ug/200ul
Isotype	IgG
Calculated MW	59257

Goat Anti-G6PD (aa 305 - 318) Antibody - Additional Information**Gene ID** 2539**Other Names**

Glucose-6-phosphate 1-dehydrogenase, G6PD, 1.1.1.49, G6PD

Dilution

WB~~1:1000

E~~N/A

Format

0.5 mg IgG/ml in Tris saline (20mM Tris pH7.3, 150mM NaCl), 0.02% sodium azide, with 0.5% bovine serum albumin

Storage

Maintain refrigerated at 2-8°C for up to 6 months. For long term storage store at -20°C in small aliquots to prevent freeze-thaw cycles.

Precautions

Goat Anti-G6PD (aa 305 - 318) Antibody is for research use only and not for use in diagnostic or therapeutic procedures.

Goat Anti-G6PD (aa 305 - 318) Antibody - Protein Information**Name** G6PD**Function**

Catalyzes the rate-limiting step of the oxidative pentose- phosphate pathway, which represents a

route for the dissimilation of carbohydrates besides glycolysis. The main function of this enzyme is to provide reducing power (NADPH) and pentose phosphates for fatty acid and nucleic acid synthesis.

Cellular Location

Cytoplasm, cytosol. Membrane; Peripheral membrane protein

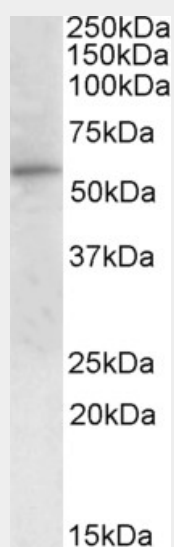
Tissue Location

Isoform Long is found in lymphoblasts, granulocytes and sperm

Goat Anti-G6PD (aa 305 - 318) Antibody - Protocols

Provided below are standard protocols that you may find useful for product applications.

- [Western Blot](#)
- [Blocking Peptides](#)
- [Dot Blot](#)
- [Immunohistochemistry](#)
- [Immunofluorescence](#)
- [Immunoprecipitation](#)
- [Flow Cytometry](#)
- [Cell Culture](#)

Goat Anti-G6PD (aa 305 - 318) Antibody - Images

AF1453a (1 µg/ml) staining of Peripheral Blood Mononucleocytes lysate (35 µg protein in RIPA buffer). Primary incubation was 1 hour. Detected by chemiluminescence.

Goat Anti-G6PD (aa 305 - 318) Antibody - Background

This gene encodes glucose-6-phosphate dehydrogenase. This protein is a cytosolic enzyme encoded by a housekeeping X-linked gene whose main function is to produce NADPH, a key electron donor in the defense against oxidizing agents and in reductive biosynthetic reactions. G6PD is remarkable for its genetic diversity. Many variants of G6PD, mostly produced from missense mutations, have been described with wide ranging levels of enzyme activity and associated clinical symptoms. G6PD deficiency may cause neonatal jaundice, acute hemolysis, or severe chronic non-spherocytic hemolytic anemia. Two transcript variants encoding different

isoforms have been found for this gene.

Goat Anti-G6PD (aa 305 - 318) Antibody - References

Variation at the NFATC2 Locus Increases the Risk of Thiazolinedione-Induced Edema in the Diabetes REduction Assessment with ramipril and rosiglitazone Medication (DREAM) Study. Bailey SD, et al. Diabetes Care, 2010 Jul 13. PMID 20628086.

Prevalence and molecular characterization of Glucose-6-Phosphate dehydrogenase deficient variants among the Kurdish population of Northern Iraq. Al-Allawi N, et al. BMC Blood Disord, 2010 Jul 5. PMID 20602793.

A novel G473A mutation in the glucose-6-phosphate dehydrogenase gene. Chen X, et al. Pediatr Blood Cancer, 2010 Aug. PMID 20582980.

Association of G6PD with lower haemoglobin concentration but not increased haemolysis in patients with sickle cell anaemia. Nouraie M, et al. Br J Haematol, 2010 Jul. PMID 20507315.

Candidate malaria susceptibility/protective SNPs in hospital and population-based studies: the effect of sub-structuring. Eid NA, et al. Malar J, 2010 May 8. PMID 20459687.