

**Goat Anti-Galanin Receptor 3 Antibody**  
**Peptide-affinity purified goat antibody**  
**Catalog # AF1460a****Specification**

---

**Goat Anti-Galanin Receptor 3 Antibody - Product Information**

Application	WB, IHC, E
Primary Accession	<a href="#">O60755</a>
Other Accession	<a href="#">NP_003605</a> , <a href="#">8484</a>
Reactivity	Human
Host	Goat
Clonality	Polyclonal
Concentration	100ug/200ul
Isotype	IgG
Calculated MW	39573

**Goat Anti-Galanin Receptor 3 Antibody - Additional Information****Gene ID** 8484**Other Names**

Galanin receptor type 3, GAL3-R, GALR-3, GALR3, GALNR3

**Dilution**WB~~1:1000  
IHC~~1:100~500  
E~~N/A**Format**

0.5 mg IgG/ml in Tris saline (20mM Tris pH7.3, 150mM NaCl), 0.02% sodium azide, with 0.5% bovine serum albumin

**Storage**

Maintain refrigerated at 2-8°C for up to 6 months. For long term storage store at -20°C in small aliquots to prevent freeze-thaw cycles.

**Precautions**

Goat Anti-Galanin Receptor 3 Antibody is for research use only and not for use in diagnostic or therapeutic procedures.

**Goat Anti-Galanin Receptor 3 Antibody - Protein Information****Name** GALR3**Synonyms** GALNR3**Function**

Receptor for the hormone galanin (PubMed:<a href="http://www.uniprot.org/citations/25691535" target="\_blank">25691535</a>). Receptor for the hormone spexin-1 (PubMed:<a href="http://www.uniprot.org/citations/24517231" target="\_blank">24517231</a>).

#### Cellular Location

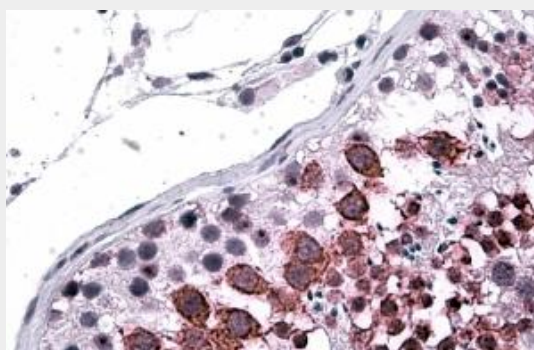
Cell membrane; Multi-pass membrane protein.

### Goat Anti-Galanin Receptor 3 Antibody - Protocols

Provided below are standard protocols that you may find useful for product applications.

- [Western Blot](#)
- [Blocking Peptides](#)
- [Dot Blot](#)
- [Immunohistochemistry](#)
- [Immunofluorescence](#)
- [Immunoprecipitation](#)
- [Flow Cytometry](#)
- [Cell Culture](#)

### Goat Anti-Galanin Receptor 3 Antibody - Images



AF1460a (3.8 µg/ml) staining of paraffin embedded Human Testis. Steamed antigen retrieval with citrate buffer pH 6, AP-staining.



AF1460a (2 µg/ml) staining of Human Skin lysate (35 µg protein in RIPA buffer). Primary incubation was 1 hour. Detected by chemiluminescence.

### **Goat Anti-Galanin Receptor 3 Antibody - Background**

The neuropeptide galanin modulates a variety of physiologic processes including cognition/memory, sensory/pain processing, hormone secretion, and feeding behavior. The human galanin receptors are G protein-coupled receptors that functionally couple to their intracellular effector through distinct signaling pathways. GALR3 is found in many tissues and may be expressed as 1.4-, 2.4-, and 5-kb transcripts

### **Goat Anti-Galanin Receptor 3 Antibody - References**

An approach based on a genome-wide association study reveals candidate loci for narcolepsy. Shimada M, et al. Hum Genet, 2010 Oct. PMID 20677014.

Comprehensive copy number variant (CNV) analysis of neuronal pathways genes in psychiatric disorders identifies rare variants within patients. Saus E, et al. J Psychiatr Res, 2010 Apr 14. PMID 20398908.

Identification of new putative susceptibility genes for several psychiatric disorders by association analysis of regulatory and non-synonymous SNPs of 306 genes involved in neurotransmission and neurodevelopment. Gratac[il]s M, et al. Am J Med Genet B Neuropsychiatr Genet, 2009 Sep 5. PMID 19086053.

Alcoholism is associated with GALR3 but not two other galanin receptor genes. Belfer I, et al. Genes Brain Behav, 2007 Jul. PMID 17083333.

Elevated expression of galanin receptors in childhood neuroblastic tumors. Berger A, et al. Neuroendocrinology, 2002 Feb. PMID 11867941.