

**Goat Anti-GCDFP15 / PIP Antibody**  
**Peptide-affinity purified goat antibody**  
**Catalog # AF1469a****Specification**

---

**Goat Anti-GCDFP15 / PIP Antibody - Product Information**

Application	WB, IHC, E
Primary Accession	<a href="#">P12273</a>
Other Accession	<a href="#">NP_002643</a> , <a href="#">5304</a>
Reactivity	Human
Host	Goat
Clonality	Polyclonal
Concentration	100ug/200ul
Isotype	IgG
Calculated MW	16572

**Goat Anti-GCDFP15 / PIP Antibody - Additional Information****Gene ID** 5304**Other Names**

Prolactin-inducible protein, Gross cystic disease fluid protein 15, GCDP-15, Prolactin-induced protein, Secretory actin-binding protein, SABP, gp17, PIP, GCDP15, GPIP4

**Dilution**

WB~~1:1000  
IHC~~1:100~500  
E~~N/A

**Format**

0.5 mg IgG/ml in Tris saline (20mM Tris pH7.3, 150mM NaCl), 0.02% sodium azide, with 0.5% bovine serum albumin

**Storage**

Maintain refrigerated at 2-8°C for up to 6 months. For long term storage store at -20°C in small aliquots to prevent freeze-thaw cycles.

**Precautions**

Goat Anti-GCDFP15 / PIP Antibody is for research use only and not for use in diagnostic or therapeutic procedures.

**Goat Anti-GCDFP15 / PIP Antibody - Protein Information****Name** PIP**Synonyms** GCDP15, GPIP4

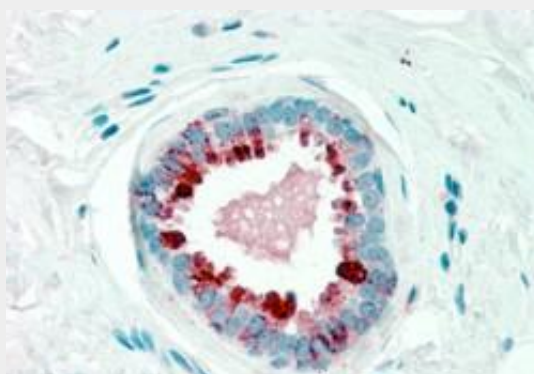
**Cellular Location**  
Secreted.**Tissue Location**

Expressed in pathological conditions of the mammary gland and in several exocrine tissues, such as the lacrimal, salivary, and sweat glands

**Goat Anti-GCDFP15 / PIP Antibody - Protocols**

Provided below are standard protocols that you may find useful for product applications.

- [Western Blot](#)
- [Blocking Peptides](#)
- [Dot Blot](#)
- [Immunohistochemistry](#)
- [Immunofluorescence](#)
- [Immunoprecipitation](#)
- [Flow Cytometry](#)
- [Cell Culture](#)

**Goat Anti-GCDFP15 / PIP Antibody - Images**

AF1469a (2.5 µg/ml) staining of paraffin embedded Human Breast. Steamed antigen retrieval with citrate buffer pH 6, AP-staining.



AF1469a (0.3 µg/ml) staining of A431 cell lysate (35 µg protein in RIPA buffer). Primary incubation was 1 hour. Detected by chemiluminescence.

**Goat Anti-GCDFP15 / PIP Antibody - References**

CLC- a novel susceptibility gene for allergic rhinitis? Bryborn M, et al. Allergy, 2010 Feb. PMID 19650845.

GCDP-15 positive and TTF-1 negative primary lung neoplasms: a tissue microarray study of 381 primary lung tumors. Wang LJ, et al. Appl Immunohistochem Mol Morphol, 2009 Dec. PMID 19620839.

Defining the human deubiquitinating enzyme interaction landscape. Sowa ME, et al. Cell, 2009 Jul 23. PMID 19615732.

A functional and regulatory network associated with PIP expression in human breast cancer. Debily MA, et al. PLoS One, 2009. PMID 19262752.

Diagnostic utility of mammaglobin and GCDP-15 in the identification of metastatic breast carcinoma in fluid specimens. Yan Z, et al. Diagn Cytopathol, 2009 Jul. PMID 19217055.