

**Goat Anti-Glycophorin A Antibody**  
**Peptide-affinity purified goat antibody**  
**Catalog # AF1486a****Specification**

---

**Goat Anti-Glycophorin A Antibody - Product Information**

Application	WB, IHC, E
Primary Accession	<a href="#">P02724</a>
Other Accession	<a href="#">NP_002090</a> , <a href="#">2993</a>
Reactivity	Human
Host	Goat
Clonality	Polyclonal
Concentration	100ug/200ul
Isotype	IgG
Calculated MW	16430

**Goat Anti-Glycophorin A Antibody - Additional Information****Gene ID** 2993**Other Names**

Glycophorin-A, MN sialoglycoprotein, PAS-2, Sialoglycoprotein alpha, CD235a, GYPA, GPA

**Dilution**

WB~~1:1000

IHC~~1:100~500

E~~N/A

**Format**

0.5 mg IgG/ml in Tris saline (20mM Tris pH7.3, 150mM NaCl), 0.02% sodium azide, with 0.5% bovine serum albumin

**Storage**

Maintain refrigerated at 2-8°C for up to 6 months. For long term storage store at -20°C in small aliquots to prevent freeze-thaw cycles.

**Precautions**

Goat Anti-Glycophorin A Antibody is for research use only and not for use in diagnostic or therapeutic procedures.

**Goat Anti-Glycophorin A Antibody - Protein Information****Name** GYPA ([HGNC:4702](#))**Function**

Component of the ankyrin-1 complex, a multiprotein complex involved in the stability and shape of the erythrocyte membrane (PubMed:&lt;a href="http://www.uniprot.org/citations/35835865"&gt;

target="\_blank">35835865</a>). Glycophorin A is the major intrinsic membrane protein of the erythrocyte. The N-terminal glycosylated segment, which lies outside the erythrocyte membrane, has MN blood group receptors. Appears to be important for the function of SLC4A1 and is required for high activity of SLC4A1. May be involved in translocation of SLC4A1 to the plasma membrane.

#### Cellular Location

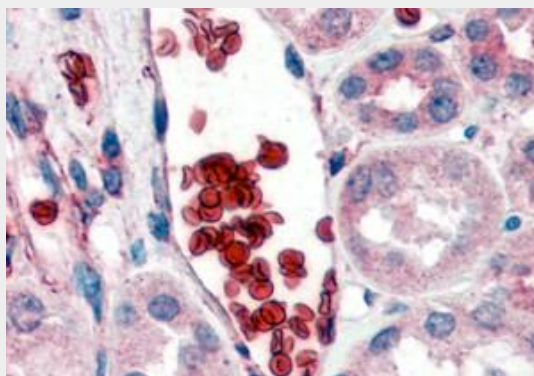
Cell membrane; Single-pass type I membrane protein Note=Appears to be colocalized with SLC4A1

#### Goat Anti-Glycophorin A Antibody - Protocols

Provided below are standard protocols that you may find useful for product applications.

- [Western Blot](#)
- [Blocking Peptides](#)
- [Dot Blot](#)
- [Immunohistochemistry](#)
- [Immunofluorescence](#)
- [Immunoprecipitation](#)
- [Flow Cytometry](#)
- [Cell Culture](#)

#### Goat Anti-Glycophorin A Antibody - Images



AF1486a (2 µg/ml) staining of paraffin embedded Human Kidney. Steamed antigen retrieval with citrate buffer pH 6, AP-staining.



AF1486a (1 µg/ml) staining of human liver lysate (35 µg protein in RIPA buffer). Primary

incubation was 1 hour. Detected by chemiluminescence.

### **Goat Anti-Glycophorin A Antibody - Background**

Glycophorins A (GYPA) and B (GYPB) are major sialoglycoproteins of the human erythrocyte membrane which bear the antigenic determinants for the MN and Ss blood groups. In addition to the M or N and S or s antigens that commonly occur in all populations, about 40 related variant phenotypes have been identified. These variants include all the variants of the Miltenberger complex and several isoforms of Sta, as well as Dantu, Sat, He, Mg, and deletion variants Ena, S-s-U- and Mk. Most of the variants are the result of gene recombinations between GYPA and GYPB.

### **Goat Anti-Glycophorin A Antibody - References**

Robust, high-throughput solution for blood group genotyping. Le Goff GC, et al. Anal Chem, 2010 Jul 15. PMID 20560530.

ABH blood group antigens in N-glycan of human glycophorin A. Fredriksson SA, et al. Arch Biochem Biophys, 2010 Jun 15. PMID 20434428.

A new isoform of Sta gene found in a family with NOR polyagglutination. Suchanowska A, et al. Transfusion, 2010 Feb. PMID 20233359.

Variants in FAM13A are associated with chronic obstructive pulmonary disease. Cho MH, et al. Nat Genet, 2010 Mar. PMID 20173748.

Unfolding a transmembrane helix dimer: A FRET study in mixed micelles. Anbazhagan V, et al. Arch Biochem Biophys, 2010 Mar 15. PMID 20074546.