

Goat Anti-GPX7 Antibody
Peptide-affinity purified goat antibody
Catalog # AF1502a**Specification**

Goat Anti-GPX7 Antibody - Product Information

Application	WB, Pep-ELISA
Primary Accession	O96SL4
Other Accession	NP_056511.2 , 2882 , 67305 (mouse) , 298376 (rat)
Reactivity	Human
Host	Goat
Clonality	Polyclonal
Concentration	100ug/200ul
Isotype	IgG
Calculated MW	20996

Goat Anti-GPX7 Antibody - Additional Information**Gene ID** 2882**Other Names**

Glutathione peroxidase 7, GPx-7, GSHPx-7, 1.11.1.9, CL683, GPX7, GPX6

Dilution

WB~~1:1000

Pep-ELISA~~N/A

Format

0.5 mg IgG/ml in Tris saline (20mM Tris pH7.3, 150mM NaCl), 0.02% sodium azide, with 0.5% bovine serum albumin

Storage

Maintain refrigerated at 2-8°C for up to 6 months. For long term storage store at -20°C in small aliquots to prevent freeze-thaw cycles.

Precautions

Goat Anti-GPX7 Antibody is for research use only and not for use in diagnostic or therapeutic procedures.

Goat Anti-GPX7 Antibody - Protein Information**Name** GPX7**Synonyms** GPX6**Function**

It protects esophageal epithelia from hydrogen peroxide- induced oxidative stress. It suppresses acidic bile acid-induced reactive oxygen species (ROS) and protects against oxidative DNA damage and double-strand breaks.

Cellular Location

Secreted.

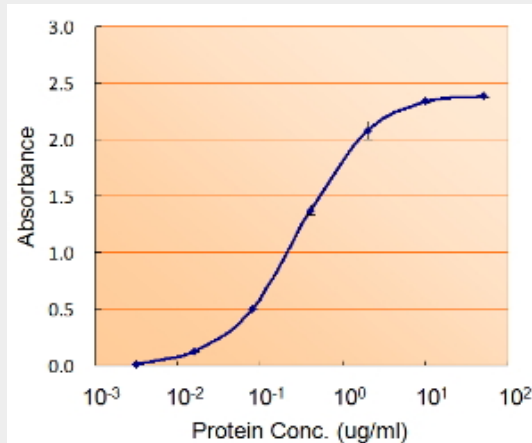
Tissue Location

Expressed in esophageal epithelial cells; expression is up-regulated after exposure to acidic bile acids

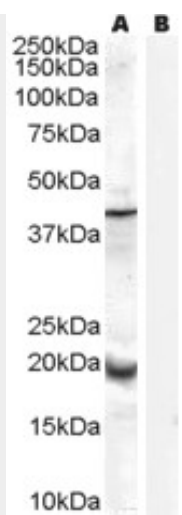
Goat Anti-GPX7 Antibody - Protocols

Provided below are standard protocols that you may find useful for product applications.

- [Western Blot](#)
- [Blocking Peptides](#)
- [Dot Blot](#)
- [Immunohistochemistry](#)
- [Immunofluorescence](#)
- [Immunoprecipitation](#)
- [Flow Cytometry](#)
- [Cell Culture](#)

Goat Anti-GPX7 Antibody - Images

EB7319 (5ug/ml) as the reporter with EB002012 as the capture rabbit antibody (5ug/ml).



AF1502a (0.3µg/ml) staining of Human Prostate lysate (35µg protein in RIPA buffer) with (B) and without (A) blocking with the immunising peptide. Primary incubation was 1 hour. Detected by chemiluminescence.

Goat Anti-GPX7 Antibody - References

Variation at the NFATC2 Locus Increases the Risk of Thiazolinedione-Induced Edema in the Diabetes REduction Assessment with ramipril and rosiglitazone Medication (DREAM) Study. Bailey SD, et al. Diabetes Care, 2010 Jul 13. PMID 20628086.

Glutathione pathway genetic polymorphisms and lung cancer survival after platinum-based chemotherapy. Moyer AM, et al. Cancer Epidemiol Biomarkers Prev, 2010 Mar. PMID 20200426.

Gene-centric association signals for lipids and apolipoproteins identified via the HumanCVD BeadChip. Talmud PJ, et al. Am J Hum Genet, 2009 Nov. PMID 19913121.

A protein-protein interaction network for human inherited ataxias and disorders of Purkinje cell degeneration. Lim J, et al. Cell, 2006 May 19. PMID 16713569.

The DNA sequence and biological annotation of human chromosome 1. Gregory SG, et al. Nature, 2006 May 18. PMID 16710414.