

Goat Anti-GRB2 Antibody
Peptide-affinity purified goat antibody
Catalog # AF1507a**Specification**

Goat Anti-GRB2 Antibody - Product Information

Application	IHC
Primary Accession	P62993
Other Accession	NP_987102 , 2885 , 14784 (mouse) , 81504 (rat)
Reactivity	Human, Mouse
Predicted	Rat, Dog, Cow
Host	Goat
Clonality	Polyclonal
Concentration	100ug/200ul
Isotype	IgG
Calculated MW	25206

Goat Anti-GRB2 Antibody - Additional Information**Gene ID** 2885**Other Names**

Growth factor receptor-bound protein 2, Adapter protein GRB2, Protein Ash, SH2/SH3 adapter GRB2, GRB2, ASH

Format

0.5 mg IgG/ml in Tris saline (20mM Tris pH7.3, 150mM NaCl), 0.02% sodium azide, with 0.5% bovine serum albumin

Storage

Maintain refrigerated at 2-8°C for up to 6 months. For long term storage store at -20°C in small aliquots to prevent freeze-thaw cycles.

Precautions

Goat Anti-GRB2 Antibody is for research use only and not for use in diagnostic or therapeutic procedures.

Goat Anti-GRB2 Antibody - Protein Information**Name** GRB2**Synonyms** ASH**Function**

Adapter protein that provides a critical link between cell surface growth factor receptors and the Ras signaling pathway.

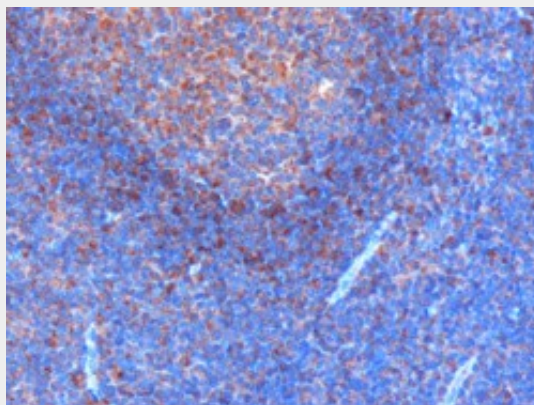
Cellular Location

Nucleus. Cytoplasm. Endosome Golgi apparatus {ECO:0000250|UniProtKB:Q60631}

Goat Anti-GRB2 Antibody - Protocols

Provided below are standard protocols that you may find useful for product applications.

- [Western Blot](#)
- [Blocking Peptides](#)
- [Dot Blot](#)
- [Immunohistochemistry](#)
- [Immunofluorescence](#)
- [Immunoprecipitation](#)
- [Flow Cytometry](#)
- [Cell Culture](#)

Goat Anti-GRB2 Antibody - Images

AF1507a (0.3 µg/ml) staining of paraffin embedded Human Tonsil. Microwaved antigen retrieval with citrate buffer pH6, HRP-staining.

Goat Anti-GRB2 Antibody - Background

The protein encoded by this gene binds the epidermal growth factor receptor and contains one SH2 domain and two SH3 domains. Its two SH3 domains direct complex formation with proline-rich regions of other proteins, and its SH2 domain binds tyrosine phosphorylated sequences. This gene is similar to the Sem5 gene of *C.elegans*, which is involved in the signal transduction pathway. Two alternatively spliced transcript variants encoding different isoforms have been found for this gene.

Goat Anti-GRB2 Antibody - References

Variation at the NFATC2 Locus Increases the Risk of Thiazolidinedione-Induced Edema in the Diabetes REduction Assessment with ramipril and rosiglitazone Medication (DREAM) Study. Bailey SD, et al. *Diabetes Care*, 2010 Jul 13. PMID 20628086.

Association study of 182 candidate genes in anorexia nervosa. Pinheiro AP, et al. *Am J Med Genet B Neuropsychiatr Genet*, 2010 Jul. PMID 20468064.

Personalized smoking cessation: interactions between nicotine dose, dependence and quit-success genotype score. Rose JE, et al. *Mol Med*, 2010 Jul-Aug. PMID 20379614.

Preliminary crystallographic characterization of the Grb2 SH2 domain in complex with a FAK-derived phosphotyrosyl peptide. Chen HH, et al. *Acta Crystallogr Sect F Struct Biol Cryst Commun*, 2010 Feb 1. PMID 20124721.

Assembly of the Sos1-Grb2-Gab1 ternary signaling complex is under allosteric control. McDonald CB, et al. Arch Biochem Biophys, 2010 Feb 15. PMID 20005866.