

Goat Anti-GST3 / GSTP1 Antibody
Peptide-affinity purified goat antibody
Catalog # AF1513a**Specification**

Goat Anti-GST3 / GSTP1 Antibody - Product Information

Application	WB, E
Primary Accession	P09211
Other Accession	NP_000843 , 2950
Reactivity	Human
Predicted	Mouse, Rat, Dog
Host	Goat
Clonality	Polyclonal
Concentration	100ug/200ul
Isotype	IgG
Calculated MW	23356

Goat Anti-GST3 / GSTP1 Antibody - Additional Information**Gene ID** 2950**Other Names**

Glutathione S-transferase P, 2.5.1.18, GST class-pi, GSTP1-1, GSTP1, FAEES3, GST3

Dilution

WB~~1:1000

E~~N/A

Format

0.5 mg IgG/ml in Tris saline (20mM Tris pH7.3, 150mM NaCl), 0.02% sodium azide, with 0.5% bovine serum albumin

Storage

Maintain refrigerated at 2-8°C for up to 6 months. For long term storage store at -20°C in small aliquots to prevent freeze-thaw cycles.

Precautions

Goat Anti-GST3 / GSTP1 Antibody is for research use only and not for use in diagnostic or therapeutic procedures.

Goat Anti-GST3 / GSTP1 Antibody - Protein Information**Name** GSTP1 ([HGNC:4638](#))**Synonyms** FAEES3, GST3**Function**

Conjugation of reduced glutathione to a wide number of exogenous and endogenous hydrophobic electrophiles. Involved in the formation of glutathione conjugates of both prostaglandin A2 (PGA2) and prostaglandin J2 (PGJ2) (PubMed:9084911). Participates in the formation of novel hepxilin regioisomers (PubMed:21046276). Negatively regulates CDK5 activity via p25/p35 translocation to prevent neurodegeneration.

Cellular Location

Cytoplasm. Mitochondrion. Nucleus. Note=The 83 N-terminal amino acids function as an uncleaved transit peptide, and arginine residues within it are crucial for mitochondrial localization

Goat Anti-GST3 / GSTP1 Antibody - Protocols

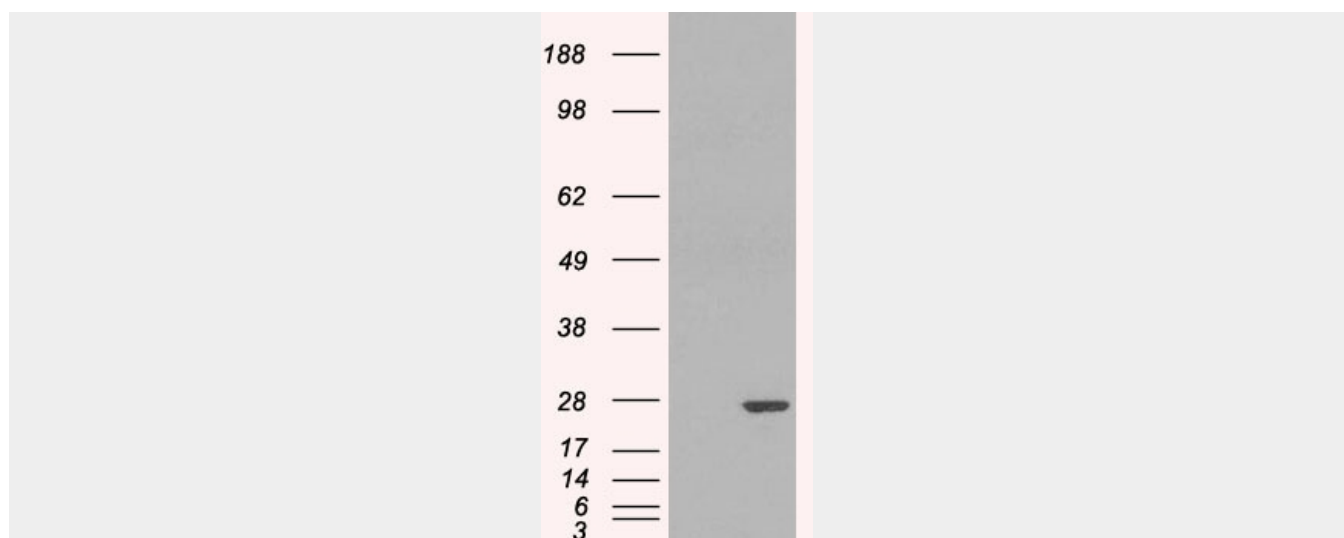
Provided below are standard protocols that you may find useful for product applications.

- [Western Blot](#)
- [Blocking Peptides](#)
- [Dot Blot](#)
- [Immunohistochemistry](#)
- [Immunofluorescence](#)
- [Immunoprecipitation](#)
- [Flow Cytometry](#)
- [Cell Culture](#)

Goat Anti-GST3 / GSTP1 Antibody - Images



AF1513a (0.01 µg/ml) staining of human kidney lysate (35 µg protein in RIPA buffer). Primary incubation was 1 hour. Detected by chemiluminescence.



HEK293 overexpressing GSTP1 (RC203086) and probed with AF1513a (mock transfection in first lane), tested by Origene.

Goat Anti-GST3 / GSTP1 Antibody - Background

Glutathione S-transferases (GSTs) are a family of enzymes that play an important role in detoxification by catalyzing the conjugation of many hydrophobic and electrophilic compounds with reduced glutathione. Based on their biochemical, immunologic, and structural properties, the soluble GSTs are categorized into 4 main classes: alpha, mu, pi, and theta. This GST family member is a polymorphic gene encoding active, functionally different GSTP1 variant proteins that are thought to function in xenobiotic metabolism and play a role in susceptibility to cancer, and other diseases.

Goat Anti-GST3 / GSTP1 Antibody - References

Maternal Nrf2 and glutathione-S-transferase polymorphisms do not modify associations of prenatal tobacco smoke exposure with asthma and lung function in school-aged children. Henderson AJ, et al. Thorax, 2010 Oct. PMID 20805158.

Evidence that polymorphic deletion of the glutathione s-transferase gene, GSTM1, is associated with esophageal atresia. Filonzi L, et al. Birth Defects Res A Clin Mol Teratol, 2010 Aug 25. PMID 20740495.

Association of glutathione S-transferase (GSTM1, T1 and P1) gene polymorphisms with type 2 diabetes mellitus in north Indian population. Bid HK, et al. J Postgrad Med, 2010 Jul-Sep. PMID 20739761.

Association of Glutathione S-Transferase, EPHX, and p53 codon 72 Gene Polymorphisms with Adult Acute Myeloid Leukemia. Chauhan PS, et al. DNA Cell Biol, 2010 Aug 23. PMID 20731606.

Betel quid chewing as an environmental risk factor for breast cancer. Kaushal M, et al. Mutat Res, 2010 Aug 20. PMID 20728566.