

Goat Anti-ICAM5 precursor Antibody
Peptide-affinity purified goat antibody
Catalog # AF1550a**Specification**

Goat Anti-ICAM5 precursor Antibody - Product Information

Application	IHC, E
Primary Accession	O9UMF0
Other Accession	NP_003250 , 7087 , 15898 (mouse) , 313785 (rat)
Reactivity	Human
Predicted	Mouse, Rat, Pig
Host	Goat
Clonality	Polyclonal
Concentration	100ug/200ul
Isotype	IgG
Calculated MW	97116

Goat Anti-ICAM5 precursor Antibody - Additional Information**Gene ID** 7087**Other Names**

Intercellular adhesion molecule 5, ICAM-5, Telencephalin, ICAM5, TLCN, TLN

Dilution

IHC~~1:100~500

E~~N/A

Format

0.5 mg IgG/ml in Tris saline (20mM Tris pH7.3, 150mM NaCl), 0.02% sodium azide, with 0.5% bovine serum albumin

Storage

Maintain refrigerated at 2-8°C for up to 6 months. For long term storage store at -20°C in small aliquots to prevent freeze-thaw cycles.

Precautions

Goat Anti-ICAM5 precursor Antibody is for research use only and not for use in diagnostic or therapeutic procedures.

Goat Anti-ICAM5 precursor Antibody - Protein Information**Name** ICAM5**Synonyms** TLCN, TLN**Function**

ICAM proteins are ligands for the leukocyte adhesion protein LFA-1 (integrin alpha-L/beta-2).

Cellular Location

Membrane; Single-pass type I membrane protein.

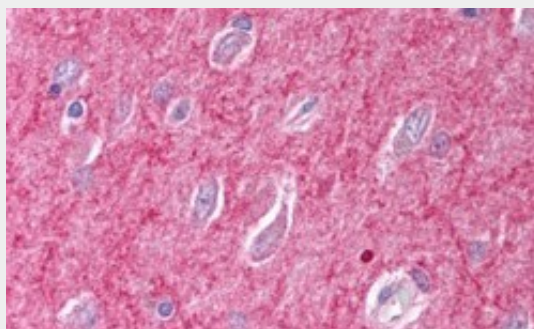
Tissue Location

Expressed on neurons in the most rostral segment of the mammalian brain, the telencephalon

Goat Anti-ICAM5 precursor Antibody - Protocols

Provided below are standard protocols that you may find useful for product applications.

- [Western Blot](#)
- [Blocking Peptides](#)
- [Dot Blot](#)
- [Immunohistochemistry](#)
- [Immunofluorescence](#)
- [Immunoprecipitation](#)
- [Flow Cytometry](#)
- [Cell Culture](#)

Goat Anti-ICAM5 precursor Antibody - Images

AF1550a (2.5 µg/ml) staining of paraffin embedded Human Brain (Cerebral Cortex). Steamed antigen retrieval with citrate buffer pH 6, AP-staining.

Goat Anti-ICAM5 precursor Antibody - Background

The protein encoded by this gene is a member of the intercellular adhesion molecule (ICAM) family. All ICAM proteins are type I transmembrane glycoproteins, contain 2-9 immunoglobulin-like C2-type domains, and bind to the leukocyte adhesion LFA-1 protein. This protein is expressed on the surface of telencephalic neurons and displays two types of adhesion activity, homophilic binding between neurons and heterophilic binding between neurons and leukocytes. It may be a critical component in neuron-microglial cell interactions in the course of normal development or as part of neurodegenerative diseases.

Goat Anti-ICAM5 precursor Antibody - References

A large-scale candidate gene approach identifies SNPs in SOD2 and IL13 as predictive markers of response to preoperative chemoradiation in rectal cancer. Ho-Pun-Cheung A, et al.

Pharmacogenomics J, 2010 Jul 20. PMID 20644561.

Variation at the NFATC2 Locus Increases the Risk of Thiazolinedione-Induced Edema in the Diabetes REduction Assessment with ramipril and rosiglitazone Medication (DREAM) Study. Bailey

SD, et al. Diabetes Care, 2010 Jul 13. PMID 20628086.

Polymorphisms in innate immunity genes and risk of childhood leukemia. Han S, et al. Hum Immunol, 2010 Jul. PMID 20438785.

Risk of meningioma and common variation in genes related to innate immunity. Rajaraman P, et al. Cancer Epidemiol Biomarkers Prev, 2010 May. PMID 20406964.

Large-scale candidate gene analysis of spontaneous clearance of hepatitis C virus. Mosbruger TL, et al. J Infect Dis, 2010 May 1. PMID 20331378.