

Goat Anti-IFT88 / Polaris Antibody
Peptide-affinity purified goat antibody
Catalog # AF1555a**Specification**

Goat Anti-IFT88 / Polaris Antibody - Product Information

Application	IHC, IF, E
Primary Accession	Q13099
Other Accession	NP_006522 , 8100 , 21821 (mouse) , 305918 (rat)
Reactivity	Human, Mouse
Predicted	Rat, Dog
Host	Goat
Clonality	Polyclonal
Concentration	100ug/200ul
Isotype	IgG
Calculated MW	93192

Goat Anti-IFT88 / Polaris Antibody - Additional Information**Gene ID** 8100**Other Names**

Intraflagellar transport protein 88 homolog, Recessive polycystic kidney disease protein Tg737 homolog, Tetratricopeptide repeat protein 10, TPR repeat protein 10, IFT88, TG737, TTC10

Dilution

IHC~~1:100~500

IF~~1:50~200

E~~N/A

Format

0.5 mg IgG/ml in Tris saline (20mM Tris pH7.3, 150mM NaCl), 0.02% sodium azide, with 0.5% bovine serum albumin

Storage

Maintain refrigerated at 2-8°C for up to 6 months. For long term storage store at -20°C in small aliquots to prevent freeze-thaw cycles.

Precautions

Goat Anti-IFT88 / Polaris Antibody is for research use only and not for use in diagnostic or therapeutic procedures.

Goat Anti-IFT88 / Polaris Antibody - Protein Information**Name** IFT88**Synonyms** TG737, TTC10

Function

Positively regulates primary cilium biogenesis (PubMed:17604723). Also involved in autophagy since it is required for trafficking of ATG16L and the expansion of the autophagic compartment.

Cellular Location

Cytoplasm, cytoskeleton, microtubule organizing center, centrosome, centriole {ECO:0000250|UniProtKB:Q61371}. Cell projection, cilium. Cytoplasm, cytoskeleton, cilium basal body. Cytoplasm, cytoskeleton, microtubule organizing center, centrosome. Cytoplasm {ECO:0000250|UniProtKB:Q61371}. Cell projection, cilium, flagellum {ECO:0000250|UniProtKB:Q61371}. Cytoplasm, cytoskeleton {ECO:0000250|UniProtKB:Q61371}. Note=Colocalizes with ENTR1 and gamma- tubulin at the basal body of primary cilia (PubMed:27767179) Colocalizes with ENTR1 and pericentrin at the centrosome (PubMed:27767179). In sperm cells, localizes to the manchette, head- tail coupling apparatus and flagellum (By similarity) {ECO:0000250|UniProtKB:Q61371, ECO:0000269|PubMed:27767179}

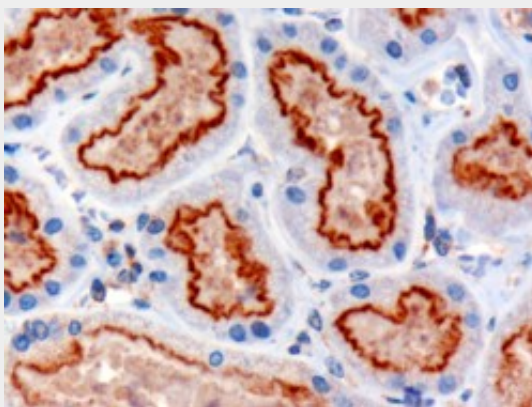
Tissue Location

Expressed in the heart, brain, liver, lung, kidney, skeletal muscle and pancreas.

Goat Anti-IFT88 / Polaris Antibody - Protocols

Provided below are standard protocols that you may find useful for product applications.

- [Western Blot](#)
- [Blocking Peptides](#)
- [Dot Blot](#)
- [Immunohistochemistry](#)
- [Immunofluorescence](#)
- [Immunoprecipitation](#)
- [Flow Cytometry](#)
- [Cell Culture](#)

Goat Anti-IFT88 / Polaris Antibody - Images

AF1555a (3 µg/ml) staining of paraffin embedded Human Kidney. Microwaved antigen retrieval with Tris/EDTA buffer pH9, HRP-staining.

Goat Anti-IFT88 / Polaris Antibody - Background

This gene encodes a member of the tetratrico peptide repeat (TPR) family. Mutations of a similar gene in mouse can cause polycystic kidney disease. Two transcript variants encoding distinct

isoforms have been identified for this gene.

Goat Anti-IFT88 / Polaris Antibody - References

Personalized smoking cessation: interactions between nicotine dose, dependence and quit-success genotype score. Rose JE, et al. Mol Med, 2010 Jul-Aug. PMID 20379614.

The intraflagellar transport component IFT88/polaris is a centrosomal protein regulating G1-S transition in non-ciliated cells. Robert A, et al. J Cell Sci, 2007 Feb 15. PMID 17264151.

RPGR-ORF15, which is mutated in retinitis pigmentosa, associates with SMC1, SMC3, and microtubule transport proteins. Khanna H, et al. J Biol Chem, 2005 Sep 30. PMID 16043481.

Analysis of a high-throughput yeast two-hybrid system and its use to predict the function of intracellular proteins encoded within the human MHC class III region. Lehner B, et al. Genomics, 2004 Jan. PMID 14667819.

Generation and initial analysis of more than 15,000 full-length human and mouse cDNA sequences. Strausberg RL, et al. Proc Natl Acad Sci U S A, 2002 Dec 24. PMID 12477932.