

Goat Anti-IGF2BP2 Antibody
Peptide-affinity purified goat antibody
Catalog # AF1556a**Specification**

Goat Anti-IGF2BP2 Antibody - Product Information

Application	WB, E
Primary Accession	O9Y6M1
Other Accession	NP_001007226 , 10644 , 319765 (mouse)
Reactivity	Human
Predicted	Mouse, Dog
Host	Goat
Clonality	Polyclonal
Concentration	100ug/200ul
Isotype	IgG
Calculated MW	66121

Goat Anti-IGF2BP2 Antibody - Additional Information**Gene ID** 10644**Other Names**

Insulin-like growth factor 2 mRNA-binding protein 2, IGF2 mRNA-binding protein 2, IMP-2, Hepatocellular carcinoma autoantigen p62, IGF-II mRNA-binding protein 2, VICKZ family member 2, IGF2BP2, IMP2, VICKZ2

Dilution

WB~~1:1000

E~~N/A

Format

0.5 mg IgG/ml in Tris saline (20mM Tris pH7.3, 150mM NaCl), 0.02% sodium azide, with 0.5% bovine serum albumin

Storage

Maintain refrigerated at 2-8°C for up to 6 months. For long term storage store at -20°C in small aliquots to prevent freeze-thaw cycles.

Precautions

Goat Anti-IGF2BP2 Antibody is for research use only and not for use in diagnostic or therapeutic procedures.

Goat Anti-IGF2BP2 Antibody - Protein Information**Name** IGF2BP2**Synonyms** IMP2, VICKZ2

Function

RNA-binding factor that recruits target transcripts to cytoplasmic protein-RNA complexes (mRNPs). This transcript 'caging' into mRNPs allows mRNA transport and transient storage. It also modulates the rate and location at which target transcripts encounter the translational apparatus and shields them from endonuclease attacks or microRNA-mediated degradation (By similarity). Preferentially binds to N6-methyladenosine (m6A)-containing mRNAs and increases their stability (PubMed:29476152). Binds to the 5'-UTR of the insulin-like growth factor 2 (IGF2) mRNAs (PubMed:9891060). Binding is isoform- specific. Binds to beta-actin/ACTB and MYC transcripts. Increases MYC mRNA stability by binding to the coding region instability determinant (CRD) and binding is enhanced by m6A-modification of the CRD (PubMed:29476152).

Cellular Location

Nucleus. Cytoplasm. Cytoplasm, P-body. Cytoplasm, Stress granule. Note=Localized in cytoplasmic mRNP granules containing untranslated mRNAs. Localizes at the connecting piece and the tail of the spermatozoa. In response to cellular stress, such as oxidative stress, recruited to stress granules

Tissue Location

Expressed in oocytes, granulosa cells of small and growing follicles, Leydig cells, spermatogonia and semen (at protein level). Expressed in testicular cancer (at protein level). Expressed weakly in heart, placenta, skeletal muscle, bone marrow, colon, kidney, salivary glands, testis and pancreas. Detected in fetal liver, fetal ovary, gonocytes and interstitial cells of the testis

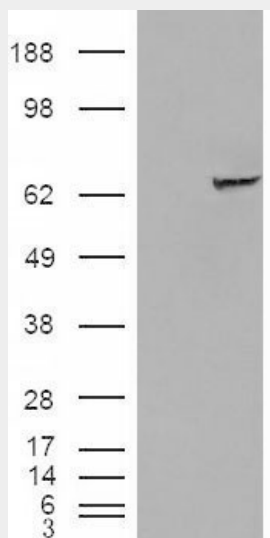
Goat Anti-IGF2BP2 Antibody - Protocols

Provided below are standard protocols that you may find useful for product applications.

- [Western Blot](#)
- [Blocking Peptides](#)
- [Dot Blot](#)
- [Immunohistochemistry](#)
- [Immunofluorescence](#)
- [Immunoprecipitation](#)
- [Flow Cytometry](#)
- [Cell Culture](#)

Goat Anti-IGF2BP2 Antibody - Images

AF1556a (1 µg/ml) staining of HepG2 cell lysate (35 µg protein in RIPA buffer). Primary incubation was 1 hour. Detected by chemiluminescence.



HEK293 overexpressing IGF2BP2 (RC205673) and probed with AF1556a (mock transfection in first lane), tested by Origene.

Goat Anti-IGF2BP2 Antibody - Background

This gene encodes a member of the IGF-II mRNA-binding protein (IMP) family. The protein encoded by this gene contains several four KH domains and two RRM domains. It functions by binding to the 5' UTR of the insulin-like growth factor 2 (IGF2) mRNA and regulating IGF2 translation. Alternate transcriptional splice variants, encoding different isoforms, have been characterized.

Goat Anti-IGF2BP2 Antibody - References

Glycemia determines the effect of type 2 diabetes risk genes on insulin secretion. Heni M, et al. Diabetes, 2010 Aug 29. PMID 20802253.

Variation at the NFATC2 Locus Increases the Risk of Thiazolinedione-Induced Edema in the Diabetes REduction Assessment with ramipril and rosiglitazone Medication (DREAM) Study. Bailey SD, et al. Diabetes Care, 2010 Jul 13. PMID 20628086.

IGF2BP1, IGF2BP2 and IGF2BP3 genotype, haplotype and genetic model studies in metabolic syndrome traits and diabetes. Rodriguez S, et al. Growth Horm IGF Res, 2010 Aug. PMID 20627640.

Coronary artery calcification and its relationship to validated genetic variants for diabetes mellitus assessed in the Heinz Nixdorf recall cohort. Pechlivanis S, et al. Arterioscler Thromb Vasc Biol, 2010 Sep. PMID 20616309.

Replication of recently described type 2 diabetes gene variants in a South Indian population. Chidambaram M, et al. Metabolism, 2010 Jun 24. PMID 20580033.