

**Goat Anti-IL12B / IL12p40 Antibody**  
**Peptide-affinity purified goat antibody**  
**Catalog # AF1562a****Specification**

---

**Goat Anti-IL12B / IL12p40 Antibody - Product Information**

Application	WB, IHC, E
Primary Accession	<a href="#">P29460</a>
Other Accession	<a href="#">NP_002178</a> , <a href="#">3593</a>
Reactivity	Human
Host	Goat
Clonality	Polyclonal
Concentration	100ug/200ul
Isotype	IgG
Calculated MW	37169

**Goat Anti-IL12B / IL12p40 Antibody - Additional Information****Gene ID** 3593**Other Names**

Interleukin-12 subunit beta, IL-12B, Cytotoxic lymphocyte maturation factor 40 kDa subunit, CLMF p40, IL-12 subunit p40, NK cell stimulatory factor chain 2, NKSF2, IL12B, NKSF2

**Dilution**

WB~~1:1000  
IHC~~1:100~500  
E~~N/A

**Format**

0.5 mg IgG/ml in Tris saline (20mM Tris pH7.3, 150mM NaCl), 0.02% sodium azide, with 0.5% bovine serum albumin

**Storage**

Maintain refrigerated at 2-8°C for up to 6 months. For long term storage store at -20°C in small aliquots to prevent freeze-thaw cycles.

**Precautions**

Goat Anti-IL12B / IL12p40 Antibody is for research use only and not for use in diagnostic or therapeutic procedures.

**Goat Anti-IL12B / IL12p40 Antibody - Protein Information****Name** IL12B**Synonyms** NKSF2

**Function**

Cytokine that can act as a growth factor for activated T and NK cells, enhance the lytic activity of NK/lymphokine-activated killer cells, and stimulate the production of IFN-gamma by resting PBMC.

**Cellular Location**

Secreted.

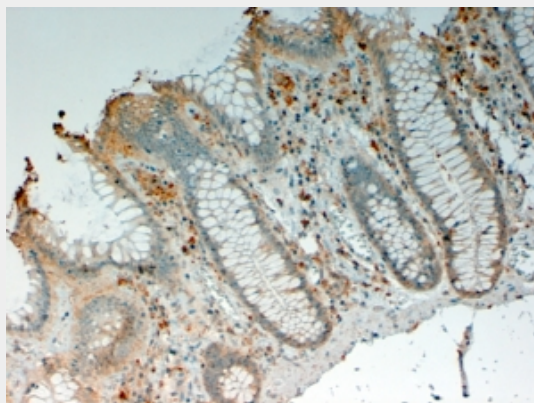
**Goat Anti-IL12B / IL12p40 Antibody - Protocols**

Provided below are standard protocols that you may find useful for product applications.

- [Western Blot](#)
- [Blocking Peptides](#)
- [Dot Blot](#)
- [Immunohistochemistry](#)
- [Immunofluorescence](#)
- [Immunoprecipitation](#)
- [Flow Cytometry](#)
- [Cell Culture](#)

**Goat Anti-IL12B / IL12p40 Antibody - Images**

AF1562a (0.1 µg/ml) staining of Human Liver lysate (35 µg protein in RIPA buffer). Primary incubation was 1 hour. Detected by chemiluminescence.



AF1562a (4 µg/ml) staining of paraffin embedded Human Colon. Steamed antigen retrieval with citrate buffer pH 9, HRP-staining.

## **Goat Anti-IL12B / IL12p40 Antibody - Background**

This gene encodes a subunit of interleukin 12, a cytokine that acts on T and natural killer cells, and has a broad array of biological activities. Interleukin 12 is a disulfide-linked heterodimer composed of the 40 kD cytokine receptor like subunit encoded by this gene, and a 35 kD subunit encoded by IL12A. This cytokine is expressed by activated macrophages that serve as an essential inducer of Th1 cells development. This cytokine has been found to be important for sustaining a sufficient number of memory/effector Th1 cells to mediate long-term protection to an intracellular pathogen. Overexpression of this gene was observed in the central nervous system of patients with multiple sclerosis (MS), suggesting a role of this cytokine in the pathogenesis of the disease. The promoter polymorphism of this gene has been reported to be associated with the severity of atopic and non-atopic asthma in children.

## **Goat Anti-IL12B / IL12p40 Antibody - References**

A genetic association study of maternal and fetal candidate genes that predispose to preterm prelabor rupture of membranes (PROM). Romero R, et al. Am J Obstet Gynecol, 2010 Jul 29. PMID 20673868.

Functional genetic polymorphisms in interleukin-12B gene in association with systemic lupus erythematosus. Miteva LD, et al. Rheumatol Int, 2010 Jul 24. PMID 20658240.

Insights into the role of IL-12B and IFN-gamma cytokine gene polymorphisms in HIV-1/AIDS infection. Sobti RC, et al. Folia Biol (Praha), 2010. PMID 20653995.

Variation at the NFATC2 Locus Increases the Risk of Thiazolinedione-Induced Edema in the Diabetes REduction Assessment with ramipril and rosiglitazone Medication (DREAM) Study. Bailey SD, et al. Diabetes Care, 2010 Jul 13. PMID 20628086.

Association of genetic polymorphisms in the IL12-IFNG pathway with susceptibility to and prognosis of pulmonary tuberculosis in a Chinese population. Wang J, et al. Eur J Clin Microbiol Infect Dis, 2010 Oct. PMID 20544370.