

Goat Anti-ING2 / ING1L Antibody
Peptide-affinity purified goat antibody
Catalog # AF1566a**Specification**

Goat Anti-ING2 / ING1L Antibody - Product Information

Application	WB
Primary Accession	O9H160
Other Accession	NP_001555 , 3622
Reactivity	Human
Predicted	Cow
Host	Goat
Clonality	Polyclonal
Concentration	100ug/200ul
Isotype	IgG
Calculated MW	32808

Goat Anti-ING2 / ING1L Antibody - Additional Information**Gene ID** 3622**Other Names**

Inhibitor of growth protein 2, Inhibitor of growth 1-like protein, ING1Lp, p32, p33ING2, ING2, ING1L

Format

0.5 mg IgG/ml in Tris saline (20mM Tris pH7.3, 150mM NaCl), 0.02% sodium azide, with 0.5% bovine serum albumin

Storage

Maintain refrigerated at 2-8°C for up to 6 months. For long term storage store at -20°C in small aliquots to prevent freeze-thaw cycles.

Precautions

Goat Anti-ING2 / ING1L Antibody is for research use only and not for use in diagnostic or therapeutic procedures.

Goat Anti-ING2 / ING1L Antibody - Protein Information**Name** ING2**Synonyms** ING1L**Function**

Seems to be involved in p53/TP53 activation and p53/TP53- dependent apoptotic pathways, probably by enhancing acetylation of p53/TP53. Component of a mSin3A-like corepressor complex, which is probably involved in deacetylation of nucleosomal histones. ING2 activity seems to be modulated by binding to phosphoinositides (PtdInsPs).

Cellular Location

Nucleus. Note=Predominantly nuclear. Localized to chromatin and nuclear matrix Upon reduced PtdIns(5)P levels seems to be released from chromatin and, at least partially, translocated to the cytoplasm

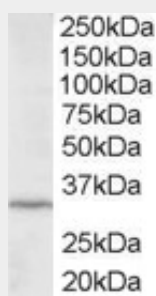
Tissue Location

Widely expressed. Higher expressed in colon-cancer tumor than in normal colon tissues.

Goat Anti-ING2 / ING1L Antibody - Protocols

Provided below are standard protocols that you may find useful for product applications.

- [Western Blot](#)
- [Blocking Peptides](#)
- [Dot Blot](#)
- [Immunohistochemistry](#)
- [Immunofluorescence](#)
- [Immunoprecipitation](#)
- [Flow Cytometry](#)
- [Cell Culture](#)

Goat Anti-ING2 / ING1L Antibody - Images

AF1566a staining (2 µg/ml) of HepG2 lysate (RIPA buffer, 35 µg total protein per lane). Primary incubated for 12 hour. Detected by western blot using chemiluminescence.

Goat Anti-ING2 / ING1L Antibody - Background

This gene is a member of the inhibitor of growth (ING) family. Members of the ING family associate with and modulate the activity of histone acetyltransferase (HAT) and histone deacetylase (HDAC) complexes and function in DNA repair and apoptosis.

Goat Anti-ING2 / ING1L Antibody - References

ING2 controls the progression of DNA replication forks to maintain genome stability. Larrieu D, et al. EMBO Rep, 2009 Oct. PMID 19730436.
ING2 is upregulated in colon cancer and increases invasion by enhanced MMP13 expression. Kumamoto K, et al. Int J Cancer, 2009 Sep 15. PMID 19437536.
Frequent deletion of ING2 locus at 4q35.1 associates with advanced tumor stage in head and neck squamous cell carcinoma. Borkosky SS, et al. J Cancer Res Clin Oncol, 2009 May. PMID 18998165.
A novel ING2 isoform, ING2b, synergizes with ING2a to prevent cell cycle arrest and apoptosis. Unoki M, et al. FEBS Lett, 2008 Nov 26. PMID 18951897.
ING2 recruits histone methyltransferase activity with methylation site specificity distinct from histone H3 lysines 4 and 9. Goeman F, et al. Biochim Biophys Acta, 2008 Oct. PMID 18513492.