

**Goat Anti-IRF2 Antibody**  
**Peptide-affinity purified goat antibody**  
**Catalog # AF1570a****Specification**

---

**Goat Anti-IRF2 Antibody - Product Information**

Application	WB, E
Primary Accession	<a href="#">P14316</a>
Other Accession	<a href="#">NP_002190</a> , <a href="#">3660</a> , <a href="#">16363 (mouse)</a>
Reactivity	Human, Mouse
Predicted	Rat, Dog
Host	Goat
Clonality	Polyclonal
Concentration	100ug/200ul
Isotype	IgG
Calculated MW	39354

**Goat Anti-IRF2 Antibody - Additional Information****Gene ID** 3660**Other Names**

Interferon regulatory factor 2, IRF-2, IRF2

**Dilution**

WB~~1:1000

E~~N/A

**Format**

0.5 mg IgG/ml in Tris saline (20mM Tris pH7.3, 150mM NaCl), 0.02% sodium azide, with 0.5% bovine serum albumin

**Storage**

Maintain refrigerated at 2-8°C for up to 6 months. For long term storage store at -20°C in small aliquots to prevent freeze-thaw cycles.

**Precautions**

Goat Anti-IRF2 Antibody is for research use only and not for use in diagnostic or therapeutic procedures.

**Goat Anti-IRF2 Antibody - Protein Information****Name** IRF2**Function**

Specifically binds to the upstream regulatory region of type I IFN and IFN-inducible MHC class I genes (the interferon consensus sequence (ICS)) and represses those genes. Also acts as an

activator for several genes including H4 and IL7. Constitutively binds to the ISRE promoter to activate IL7. Involved in cell cycle regulation through binding the site II (HINF-M) promoter region of H4 and activating transcription during cell growth. Antagonizes IRF1 transcriptional activation.

**Cellular Location**

Nucleus.

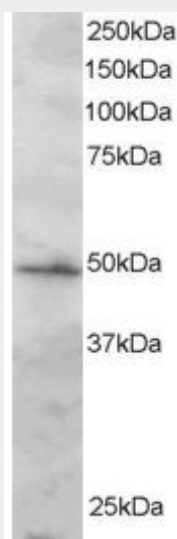
**Tissue Location**

Expressed throughout the epithelium of the colon. Also expressed in lamina propria.

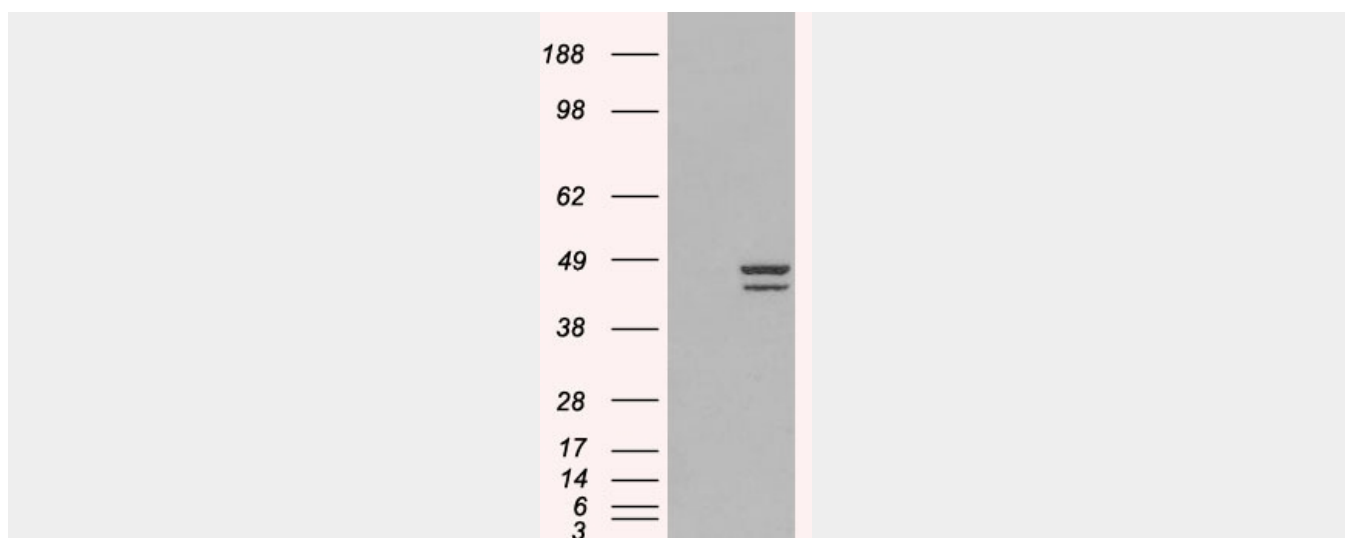
**Goat Anti-IRF2 Antibody - Protocols**

Provided below are standard protocols that you may find useful for product applications.

- [Western Blot](#)
- [Blocking Peptides](#)
- [Dot Blot](#)
- [Immunohistochemistry](#)
- [Immunofluorescence](#)
- [Immunoprecipitation](#)
- [Flow Cytometry](#)
- [Cell Culture](#)

**Goat Anti-IRF2 Antibody - Images**

AF1570a staining (2 µg/ml) of Jurkat lysate (RIPA buffer, 30 µg total protein per lane). Primary incubated for 1 hour. Detected by western blot using chemiluminescence.



HEK293 overexpressing IRF2 (RC202102) and probed with EB0xxx (mock transfection in first lane), tested by Origene.

#### **Goat Anti-IRF2 Antibody - Background**

IRF2 encodes interferon regulatory factor 2, a member of the interferon regulatory transcription factor (IRF) family. IRF2 competitively inhibits the IRF1-mediated transcriptional activation of interferons alpha and beta, and presumably other genes that employ IRF1 for transcription activation. However, IRF2 also functions as a transcriptional activator of histone H4.

#### **Goat Anti-IRF2 Antibody - References**

Personalized smoking cessation: interactions between nicotine dose, dependence and quit-success genotype score. Rose JE, et al. Mol Med, 2010 Jul-Aug. PMID 20379614.

Interferon regulatory factor (IRF)-2 activates the HPV-16 E6-E7 promoter in keratinocytes. Lace MJ, et al. Virology, 2010 Apr 10. PMID 20129639.

Enhanced RIG-I expression is mediated by interferon regulatory factor-2 in peripheral blood B cells from hepatitis C virus-infected patients. Masumi A, et al. Biochem Biophys Res Commun, 2010 Jan 22. PMID 20034464.

Role of polypyrimidine tract binding protein in mediating internal initiation of translation of interferon regulatory factor 2 RNA. Dhar D, et al. PLoS One, 2009 Sep 16. PMID 19756143.

Analyses of associations with asthma in four asthma population samples from Canada and Australia. Daley D, et al. Hum Genet, 2009 May. PMID 19247692.