

Goat Anti-KLF4 / GKLF Antibody
Peptide-affinity purified goat antibody
Catalog # AF1596a**Specification**

Goat Anti-KLF4 / GKLF Antibody - Product Information

Application	WB, E
Primary Accession	O43474
Other Accession	NP_004226 , 9314
Reactivity	Human
Predicted	Mouse, Rat
Host	Goat
Clonality	Polyclonal
Concentration	100ug/200ul
Isotype	IgG
Calculated MW	54671

Goat Anti-KLF4 / GKLF Antibody - Additional Information**Gene ID** 9314**Other Names**

Krueppel-like factor 4, Epithelial zinc finger protein EZF, Gut-enriched krueppel-like factor, KLF4, EZF, GKLF

Dilution

WB~~1:1000

E~~N/A

Format

0.5 mg IgG/ml in Tris saline (20mM Tris pH7.3, 150mM NaCl), 0.02% sodium azide, with 0.5% bovine serum albumin

Storage

Maintain refrigerated at 2-8°C for up to 6 months. For long term storage store at -20°C in small aliquots to prevent freeze-thaw cycles.

Precautions

Goat Anti-KLF4 / GKLF Antibody is for research use only and not for use in diagnostic or therapeutic procedures.

Goat Anti-KLF4 / GKLF Antibody - Protein Information**Name** KLF4 ([HGNC:6348](#))**Synonyms** EZF, GKLF

Function

Transcription factor; can act both as activator and as repressor. Binds the 5'-CACCC-3' core sequence. Binds to the promoter region of its own gene and can activate its own transcription. Regulates the expression of key transcription factors during embryonic development. Plays an important role in maintaining embryonic stem cells, and in preventing their differentiation. Required for establishing the barrier function of the skin and for postnatal maturation and maintenance of the ocular surface. Involved in the differentiation of epithelial cells and may also function in skeletal and kidney development. Contributes to the down-regulation of p53/TP53 transcription.

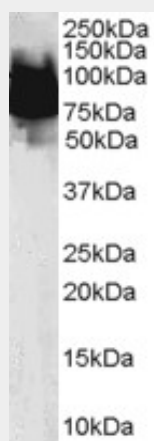
Cellular Location

Nucleus {ECO:0000250|UniProtKB:Q60793}. Cytoplasm {ECO:0000250|UniProtKB:Q60793}

Goat Anti-KLF4 / GKLF Antibody - Protocols

Provided below are standard protocols that you may find useful for product applications.

- [Western Blot](#)
- [Blocking Peptides](#)
- [Dot Blot](#)
- [Immunohistochemistry](#)
- [Immunofluorescence](#)
- [Immunoprecipitation](#)
- [Flow Cytometry](#)
- [Cell Culture](#)

Goat Anti-KLF4 / GKLF Antibody - Images

AF1596a (0.1 µg/ml) staining of Human Duodenum lysate (35 µg protein in RIPA buffer). Primary incubation was 1 hour. Detected by chemiluminescence.

Goat Anti-KLF4 / GKLF Antibody - References

MCC-555-induced NAG-1 expression is mediated in part by KLF4. Cekanova M, et al. Eur J Pharmacol, 2010 Jul 10. PMID 20385121.
Kruppel-like factor 4 inhibits epithelial-to-mesenchymal transition through regulation of E-cadherin gene expression. Yori JL, et al. J Biol Chem, 2010 May 28. PMID 20356845.
MicroRNA-10b promotes migration and invasion through KLF4 in human esophageal cancer cell lines. Tian Y, et al. J Biol Chem, 2010 Mar 12. PMID 20075075.
Genetic and epigenetic inactivation of Kruppel-like factor 4 in medulloblastoma. Nakahara Y, et al.

Neoplasia, 2010 Jan. PMID 20072650.

Kruppel-like factor 4 (Klf4) prevents embryonic stem (ES) cell differentiation by regulating Nanog gene expression. Zhang P, et al. J Biol Chem, 2010 Mar 19. PMID 20071344.