

**Goat Anti-KLF8 / BKLF3 Antibody**  
**Peptide-affinity purified goat antibody**  
**Catalog # AF1597a****Specification**

---

**Goat Anti-KLF8 / BKLF3 Antibody - Product Information**

Application	WB, E
Primary Accession	<a href="#">O95600</a>
Other Accession	<a href="#">NP_001152768</a> , <a href="#">11279</a>
Reactivity	Human
Predicted	Pig
Host	Goat
Clonality	Polyclonal
Concentration	100ug/200ul
Isotype	IgG
Calculated MW	39314

**Goat Anti-KLF8 / BKLF3 Antibody - Additional Information****Gene ID** 11279**Other Names**

Krueppel-like factor 8, Basic krueppel-like factor 3, Zinc finger protein 741, KLF8, BKLF3, ZNF741

**Dilution**

WB~~1:1000

E~~N/A

**Format**

0.5 mg IgG/ml in Tris saline (20mM Tris pH7.3, 150mM NaCl), 0.02% sodium azide, with 0.5% bovine serum albumin

**Storage**

Maintain refrigerated at 2-8°C for up to 6 months. For long term storage store at -20°C in small aliquots to prevent freeze-thaw cycles.

**Precautions**

Goat Anti-KLF8 / BKLF3 Antibody is for research use only and not for use in diagnostic or therapeutic procedures.

**Goat Anti-KLF8 / BKLF3 Antibody - Protein Information****Name** KLF8**Synonyms** BKLF3, ZNF741**Function**

Transcriptional repressor and activator. Binds to CACCC-boxes promoter elements. Also binds the GT-box of cyclin D1 promoter and mediates cell cycle progression at G(1) phase as a downstream target of focal adhesion kinase (FAK).

**Cellular Location**

Nucleus.

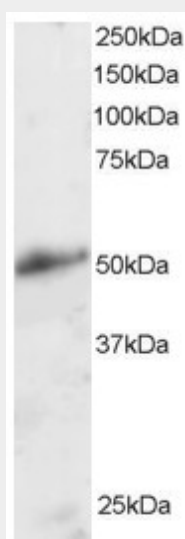
**Tissue Location**

Ubiquitous..

**Goat Anti-KLF8 / BKLF3 Antibody - Protocols**

Provided below are standard protocols that you may find useful for product applications.

- [Western Blot](#)
- [Blocking Peptides](#)
- [Dot Blot](#)
- [Immunohistochemistry](#)
- [Immunofluorescence](#)
- [Immunoprecipitation](#)
- [Flow Cytometry](#)
- [Cell Culture](#)

**Goat Anti-KLF8 / BKLF3 Antibody - Images**

AF1597a staining (2 µg/ml) of Human Kidney lysate (RIPA buffer, 30 µg total protein per lane). Primary incubated for 1 hour. Detected by western blot using chemiluminescence.

**Goat Anti-KLF8 / BKLF3 Antibody - Background**

This gene encodes a protein which is a member of the Sp/KLF family of transcription factors. Members of this family contain a C-terminal DNA-binding domain with three Kruppel-like zinc fingers. The encoded protein is thought to play an important role in the regulation of epithelial to mesenchymal transition, a process which occurs normally during development but also during metastasis. A pseudogene has been identified on chromosome 16. Alternative splicing results in multiple transcript variants.

**Goat Anti-KLF8 / BKLF3 Antibody - References**

Small interference RNA targeting Kr  ppel-like factor 8 inhibits the renal carcinoma 786-0 cells growth in vitro and in vivo. Fu WJ, et al. J Cancer Res Clin Oncol, 2010 Aug. PMID 20182889.

Activation of KLF8 transcription by focal adhesion kinase in human ovarian epithelial and cancer cells. Wang X, et al. J Biol Chem, 2008 May 16. PMID 18353772.

Kr  ppel-like factor 8 induces epithelial to mesenchymal transition and epithelial cell invasion. Wang X, et al. Cancer Res, 2007 Aug 1. PMID 17671186.

Systematic RNAi studies on the role of Sp/KLF factors in globin gene expression and erythroid differentiation. Hu JH, et al. J Mol Biol, 2007 Mar 2. PMID 17224162.

KLF8 transcription factor participates in oncogenic transformation. Wang X, et al. Oncogene, 2007 Jan 18. PMID 16832343.