

**Goat Anti-LARP2 Antibody**  
**Peptide-affinity purified goat antibody**  
**Catalog # AF1611a****Specification**

---

**Goat Anti-LARP2 Antibody - Product Information**

Application	IF, FC, Pep-ELISA
Primary Accession	<a href="#">Q659C4</a>
Other Accession	<a href="#">NP_060548</a> , <a href="#">55132</a>
Reactivity	Human
Host	Goat
Clonality	Polyclonal
Concentration	100ug/200ul
Isotype	IgG
Calculated MW	105322

**Goat Anti-LARP2 Antibody - Additional Information****Gene ID** 55132**Other Names**

La-related protein 1B, La ribonucleoprotein domain family member 1B, La ribonucleoprotein domain family member 2, La-related protein 2, LARP1B, LARP2

**Dilution**

IF~~1:50~200

FC~~1:10~50

Pep-ELISA~~N/A

**Format**

0.5 mg IgG/ml in Tris saline (20mM Tris pH7.3, 150mM NaCl), 0.02% sodium azide, with 0.5% bovine serum albumin

**Storage**

Maintain refrigerated at 2-8°C for up to 6 months. For long term storage store at -20°C in small aliquots to prevent freeze-thaw cycles.

**Precautions**

Goat Anti-LARP2 Antibody is for research use only and not for use in diagnostic or therapeutic procedures.

**Goat Anti-LARP2 Antibody - Protein Information****Name** LARP1B**Synonyms** LARP2

## Goat Anti-LARP2 Antibody - Protocols

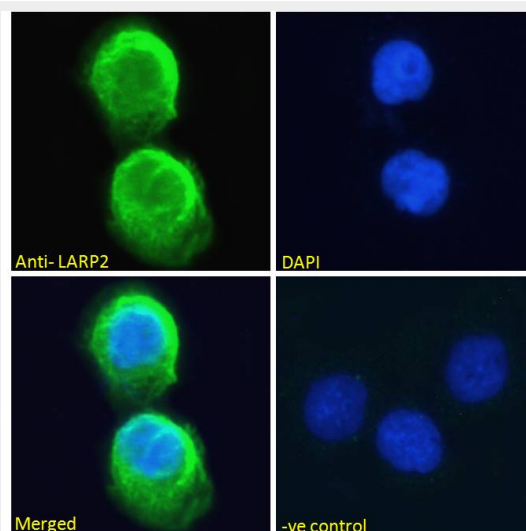
Provided below are standard protocols that you may find useful for product applications.

- [Western Blot](#)
- [Blocking Peptides](#)
- [Dot Blot](#)
- [Immunohistochemistry](#)
- [Immunofluorescence](#)
- [Immunoprecipitation](#)
- [Flow Cytometry](#)
- [Cell Culture](#)

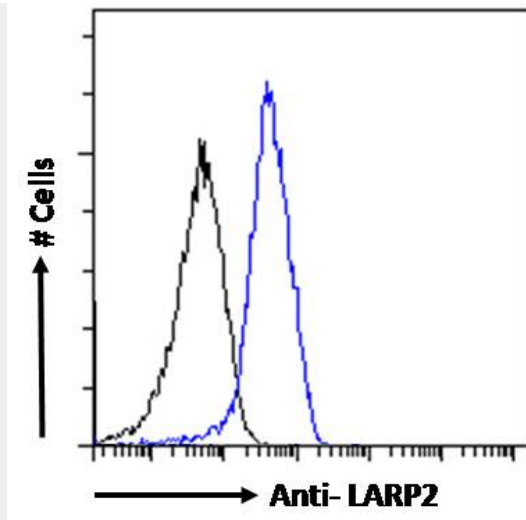
## Goat Anti-LARP2 Antibody - Images



AF1611a (0.1  $\mu\text{g/ml}$ ) staining of Human Testis lysate (35  $\mu\text{g}$  protein in RIPA buffer). Primary incubation was 1 hour. Detected by chemiluminescence.



EB07617 Immunofluorescence analysis of paraformaldehyde fixed A431 cells, permeabilized with 0.15% Triton. Primary incubation 1hr (10 $\mu\text{g/ml}$ ) followed by Alexa Fluor 488 secondary antibody (2 $\mu\text{g/ml}$ ), showing cytoplasmic staining. The nuclear stain is DAPI (b



EB07617 Flow cytometric analysis of paraformaldehyde fixed HepG2 cells (blue line), permeabilized with 0.5% Triton. Primary incubation overnight (10ug/ml) followed by Alexa Fluor 488 secondary antibody (1ug/ml). IgG control: Unimmunized goat IgG (black li

#### **Goat Anti-LARP2 Antibody - Background**

This gene encodes a protein containing domains found in the La related protein of *Drosophila melanogaster*. La motif-containing proteins are thought to be RNA-binding proteins, where the La motif and adjacent amino acids fold into an RNA recognition motif. The La motif is also found in proteins unrelated to the La protein. Alternative splicing has been observed at this locus and three variants, encoding distinct isoforms, are described. Additional splice variation has been identified but the full-length nature of these transcripts has not been determined.

#### **Goat Anti-LARP2 Antibody - References**

Complete sequencing and characterization of 21,243 full-length human cDNAs. Ota T, et al. Nat Genet, 2004 Jan. PMID 14702039.  
 Generation and initial analysis of more than 15,000 full-length human and mouse cDNA sequences. Strausberg RL, et al. Proc Natl Acad Sci U S A, 2002 Dec 24. PMID 12477932.  
 The La protein. Wolin SL, et al. Annu Rev Biochem, 2002. PMID 12045101.