

**Goat Anti-Mammaglobin A / SCGB2A2 Antibody**  
**Peptide-affinity purified goat antibody**  
**Catalog # AF1648a****Specification**

---

**Goat Anti-Mammaglobin A / SCGB2A2 Antibody - Product Information**

Application	IHC, E
Primary Accession	<a href="#">Q13296</a>
Other Accession	<a href="#">NP_002402</a> , <a href="#">4250</a>
Reactivity	Human
Host	Goat
Clonality	Polyclonal
Concentration	100ug/200ul
Isotype	IgG
Calculated MW	10499

**Goat Anti-Mammaglobin A / SCGB2A2 Antibody - Additional Information****Gene ID** 4250**Other Names**

Mammaglobin-A, Mammaglobin-1, Secretoglobin family 2A member 2, SCGB2A2, MGB1, UGB2

**Dilution**

IHC~~1:100~500

E~~N/A

**Format**

0.5 mg IgG/ml in Tris saline (20mM Tris pH7.3, 150mM NaCl), 0.02% sodium azide, with 0.5% bovine serum albumin

**Storage**

Maintain refrigerated at 2-8°C for up to 6 months. For long term storage store at -20°C in small aliquots to prevent freeze-thaw cycles.

**Precautions**

Goat Anti-Mammaglobin A / SCGB2A2 Antibody is for research use only and not for use in diagnostic or therapeutic procedures.

**Goat Anti-Mammaglobin A / SCGB2A2 Antibody - Protein Information****Name** SCGB2A2**Synonyms** MGB1, UGB2**Cellular Location**

Secreted.

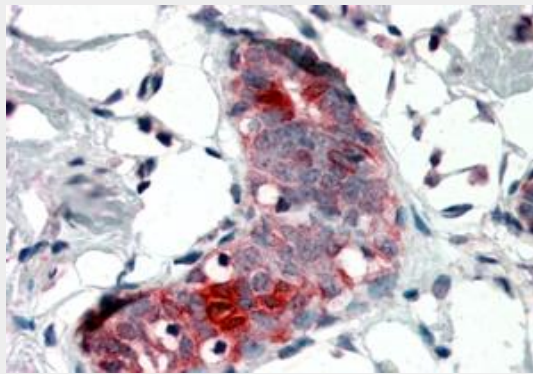
**Tissue Location**

Mammary gland specific. Over-expressed in breast cancer

**Goat Anti-Mammaglobin A / SCGB2A2 Antibody - Protocols**

Provided below are standard protocols that you may find useful for product applications.

- [Western Blot](#)
- [Blocking Peptides](#)
- [Dot Blot](#)
- [Immunohistochemistry](#)
- [Immunofluorescence](#)
- [Immunoprecipitation](#)
- [Flow Cytometry](#)
- [Cell Culture](#)

**Goat Anti-Mammaglobin A / SCGB2A2 Antibody - Images**

AF1648a (4 µg/ml) staining of paraffin embedded Human Breast. Steamed antigen retrieval with citrate buffer pH 6, AP-staining.

**Goat Anti-Mammaglobin A / SCGB2A2 Antibody - References**

Plasma mammaglobin messenger RNA in breast cancer patients as an addition to serum tumor. El-Attar NI, et al. Egypt J Immunol, 2007. PMID 20306663.  
Mammaglobin and maspin transcripts in blood may reflect disease progression and the effect of therapy in breast cancer. Bitisik O, et al. Genet Mol Res, 2010. PMID 20092039.  
Analysis of the immunohistochemical expression of mammaglobin A in primary breast carcinoma and lymph node metastasis. Raica M, et al. Rom J Morphol Embryol, 2009. PMID 19690758.  
Diagnostic utility of mammaglobin and GCDP-15 in the identification of metastatic breast carcinoma in fluid specimens. Yan Z, et al. Diagn Cytopathol, 2009 Jul. PMID 19217055.  
A small subgroup of operable breast cancer patients with poor prognosis identified by quantitative real-time RT-PCR detection of mammaglobin A and trefoil factor 1 mRNA expression in bone marrow. Tjensvoll K, et al. Breast Cancer Res Treat, 2009 Jul. PMID 18846421.