

Goat Anti-MAN2A1 Antibody
Peptide-affinity purified goat antibody
Catalog # AF1649a**Specification**

Goat Anti-MAN2A1 Antibody - Product Information

Application	WB, E
Primary Accession	Q16706
Other Accession	NP_002363 , 4124
Reactivity	Human
Host	Goat
Clonality	Polyclonal
Concentration	100ug/200ul
Isotype	IgG
Calculated MW	131141

Goat Anti-MAN2A1 Antibody - Additional Information**Gene ID** 4124**Other Names**

Alpha-mannosidase 2, 3.2.1.114, Golgi alpha-mannosidase II, AMan II, Man II, Mannosidase alpha class 2A member 1, Mannosyl-oligosaccharide 1, 3-1, 6-alpha-mannosidase, MAN2A1, MANA2

Dilution

WB~~1:1000

E~~N/A

Format

0.5 mg IgG/ml in Tris saline (20mM Tris pH7.3, 150mM NaCl), 0.02% sodium azide, with 0.5% bovine serum albumin

Storage

Maintain refrigerated at 2-8°C for up to 6 months. For long term storage store at -20°C in small aliquots to prevent freeze-thaw cycles.

Precautions

Goat Anti-MAN2A1 Antibody is for research use only and not for use in diagnostic or therapeutic procedures.

Goat Anti-MAN2A1 Antibody - Protein Information**Name** MAN2A1**Synonyms** MANA2**Function**

Catalyzes the first committed step in the biosynthesis of complex N-glycans. It controls conversion of high mannose to complex N- glycans; the final hydrolytic step in the N-glycan maturation pathway.

Cellular Location

Golgi apparatus membrane {ECO:0000250|UniProtKB:P28494}; Single-pass type II membrane protein {ECO:0000250|UniProtKB:P28494}

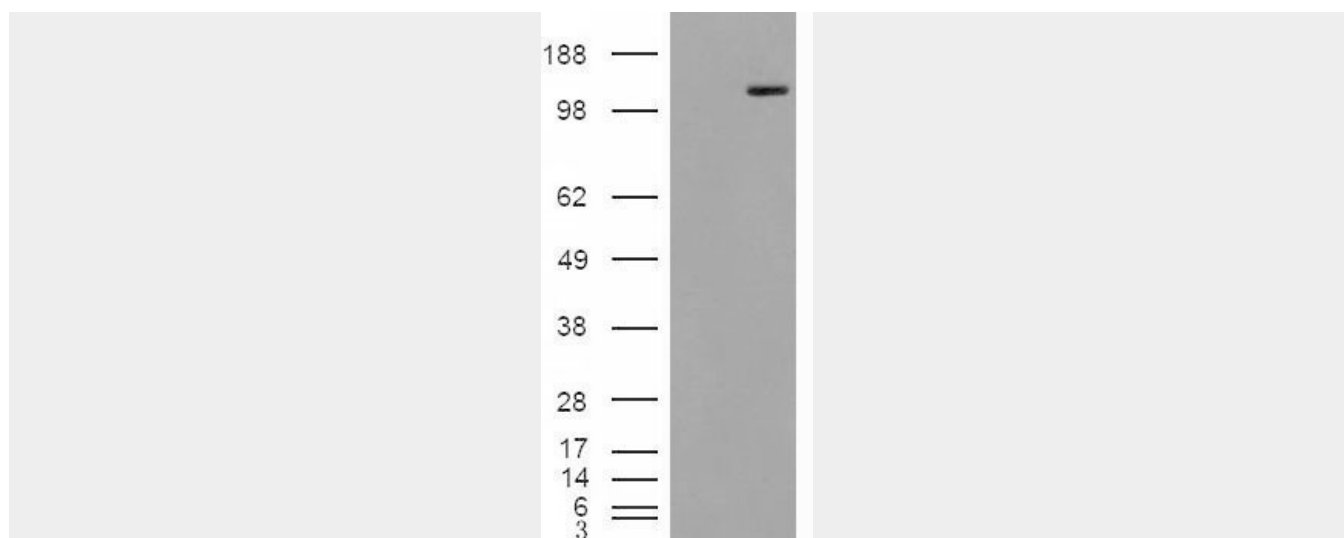
Goat Anti-MAN2A1 Antibody - Protocols

Provided below are standard protocols that you may find useful for product applications.

- [Western Blot](#)
- [Blocking Peptides](#)
- [Dot Blot](#)
- [Immunohistochemistry](#)
- [Immunofluorescence](#)
- [Immunoprecipitation](#)
- [Flow Cytometry](#)
- [Cell Culture](#)

Goat Anti-MAN2A1 Antibody - Images

AF1649a (0.3 µg/ml) staining of Human Placenta lysate (35 µg protein in RIPA buffer). Primary incubation was 1 hour. Detected by chemiluminescence.



HEK293 overexpressing Man2A1 (RC220186) and probed with AF1649a (mock transfection in first lane), tested by Origene.

Goat Anti-MAN2A1 Antibody - Background

This gene encodes a protein which is a member of family 38 of the glycosyl hydrolases. The protein is located in the Golgi and catalyzes the final hydrolytic step in the asparagine-linked oligosaccharide (N-glycan) maturation pathway. Mutations in the mouse homolog of this gene have been shown to cause a systemic autoimmune disease similar to human systemic lupus erythematosus.

Goat Anti-MAN2A1 Antibody - References

Variants in KCNQ1, AP3S1, MAN2A1, and ALDH7A1 and the risk of type 2 diabetes in the Chinese Northern Han population: a case-control study and meta-analysis. Zhou JB, et al. *Med Sci Monit*, 2010 Jun. PMID 20512086.

Personalized smoking cessation: interactions between nicotine dose, dependence and quit-success genotype score. Rose JE, et al. *Mol Med*, 2010 Jul-Aug. PMID 20379614.

Genome-wide association study of childhood acute lymphoblastic leukemia in Korea. Han S, et al. *Leuk Res*, 2010 Oct. PMID 20189245.

Association of polymorphisms in complement component C3 gene with susceptibility to systemic lupus erythematosus. Miyagawa H, et al. *Rheumatology (Oxford)*, 2008 Feb. PMID 18174230.

Genome-wide association and linkage analyses of hemostatic factors and hematological phenotypes in the Framingham Heart Study. Yang Q, et al. *BMC Med Genet*, 2007 Sep 19. PMID 17903294.