

Goat Anti-MEPI / SERPINI2 Antibody
Peptide-affinity purified goat antibody
Catalog # AF1670a**Specification**

Goat Anti-MEPI / SERPINI2 Antibody - Product Information

Application	WB, IHC, E
Primary Accession	O75830
Other Accession	NP_001012303 , 5276 , 67931 (mouse) , 171149 (rat)
Reactivity	Human
Predicted	Mouse, Rat, Dog
Host	Goat
Clonality	Polyclonal
Concentration	100ug/200ul
Isotype	IgG
Calculated MW	46145

Goat Anti-MEPI / SERPINI2 Antibody - Additional Information**Gene ID** 5276**Other Names**

Serpin I2, Myoepithelium-derived serine protease inhibitor, Pancpin, Pancreas-specific protein TSA2004, Peptidase inhibitor 14, PI-14, SERPINI2, MEPI, PI14

Dilution

WB~~1:1000
IHC~~1:100~500
E~~N/A

Format

0.5 mg IgG/ml in Tris saline (20mM Tris pH7.3, 150mM NaCl), 0.02% sodium azide, with 0.5% bovine serum albumin

Storage

Maintain refrigerated at 2-8°C for up to 6 months. For long term storage store at -20°C in small aliquots to prevent freeze-thaw cycles.

Precautions

Goat Anti-MEPI / SERPINI2 Antibody is for research use only and not for use in diagnostic or therapeutic procedures.

Goat Anti-MEPI / SERPINI2 Antibody - Protein Information**Name** SERPINI2

Synonyms MEPI, PI14

Cellular Location
Secreted.

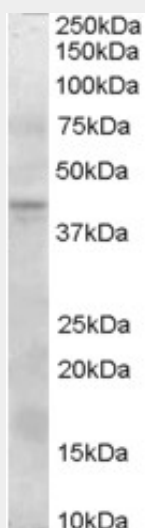
Tissue Location
Expressed in pancreas and adipose tissues.

Goat Anti-MEPI / SERPINI2 Antibody - Protocols

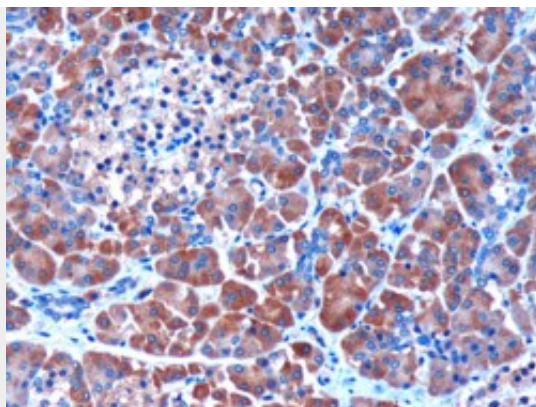
Provided below are standard protocols that you may find useful for product applications.

- [Western Blot](#)
- [Blocking Peptides](#)
- [Dot Blot](#)
- [Immunohistochemistry](#)
- [Immunofluorescence](#)
- [Immunoprecipitation](#)
- [Flow Cytometry](#)
- [Cell Culture](#)

Goat Anti-MEPI / SERPINI2 Antibody - Images



AF1670a (0.3 µg/ml) staining of Human Pancreas lysate (35 µg protein in RIPA buffer). Primary incubation was 1 hour. Detected by chemiluminescence.



AF1670a (3 µg/ml) staining of paraffin embedded Human Pancreas. Microwaved antigen retrieval with citrate buffer pH 6, HRP-staining

Goat Anti-MEPI / SERPINI2 Antibody - Background

The protein encoded by this gene is a member of the serine protease inhibitor (serpin) superfamily made up of proteins which play central roles in the regulation of a wide variety of physiological processes, including coagulation, fibrinolysis, development, malignancy and inflammation. The gene product may have a role in a growth-control, possibly growth-suppressing pathway and, when impaired, may be involved in pancreatic carcinogenesis. The protein is a member of the plasminogen activator inhibitor-1 family, a subset of the serpin superfamily whose members act as tissue-specific tPA inhibitors. Two alternatively spliced transcript variants encoding distinct protein isoforms have been found for this gene.

Goat Anti-MEPI / SERPINI2 Antibody - References

A Large-scale genetic association study of esophageal adenocarcinoma risk. Liu CY, et al. *Carcinogenesis*, 2010 Jul. PMID 20453000.

A protein-protein interaction network for human inherited ataxias and disorders of Purkinje cell degeneration. Lim J, et al. *Cell*, 2006 May 19. PMID 16713569.

Towards a proteome-scale map of the human protein-protein interaction network. Rual JF, et al. *Nature*, 2005 Oct 20. PMID 16189514.

The status, quality, and expansion of the NIH full-length cDNA project: the Mammalian Gene Collection (MGC). Gerhard DS, et al. *Genome Res*, 2004 Oct. PMID 15489334.

Generation and initial analysis of more than 15,000 full-length human and mouse cDNA sequences. Strausberg RL, et al. *Proc Natl Acad Sci U S A*, 2002 Dec 24. PMID 12477932.