

Goat Anti-Netrin 1 Antibody
Peptide-affinity purified goat antibody
Catalog # AF1718a**Specification**

Goat Anti-Netrin 1 Antibody - Product Information

Application	WB, IHC, E
Primary Accession	O95631
Other Accession	NP_004813 , 9423 , 18208 (mouse) , 114523 (rat)
Reactivity	Human, Mouse, Rat
Predicted	Dog
Host	Goat
Clonality	Polyclonal
Concentration	100ug/200ul
Isotype	IgG
Calculated MW	67748

Goat Anti-Netrin 1 Antibody - Additional Information**Gene ID** 9423**Other Names**

Netrin-1, Epididymis tissue protein Li 131P, NTN1, NTN1L

Dilution

WB~~1:1000

IHC~~1:100~500

E~~N/A

Format

0.5 mg IgG/ml in Tris saline (20mM Tris pH7.3, 150mM NaCl), 0.02% sodium azide, with 0.5% bovine serum albumin

Storage

Maintain refrigerated at 2-8°C for up to 6 months. For long term storage store at -20°C in small aliquots to prevent freeze-thaw cycles.

Precautions

Goat Anti-Netrin 1 Antibody is for research use only and not for use in diagnostic or therapeutic procedures.

Goat Anti-Netrin 1 Antibody - Protein Information**Name** NTN1**Synonyms** NTN1L

Function

Netrins control guidance of CNS commissural axons and peripheral motor axons. Its association with either DCC or some UNC5 receptors will lead to axon attraction or repulsion, respectively. Binding to UNC5C might cause dissociation of UNC5C from polymerized TUBB3 in microtubules and thereby lead to increased microtubule dynamics and axon repulsion (PubMed:28483977). Involved in dorsal root ganglion axon projection towards the spinal cord (PubMed:28483977). It also serves as a survival factor via its association with its receptors which prevent the initiation of apoptosis. Involved in tumorigenesis by regulating apoptosis (PubMed:15343335).

Cellular Location

Secreted. Cytoplasm. Note=Mainly secreted

Tissue Location

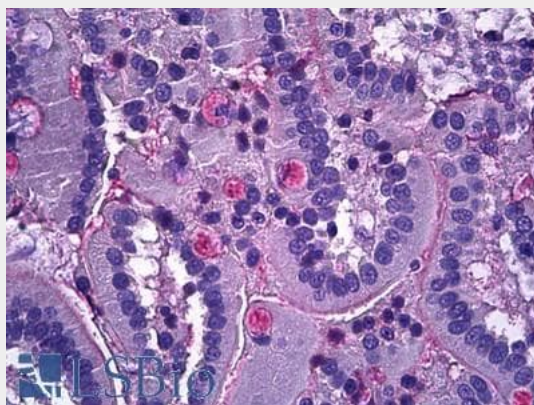
Widely expressed in normal adult tissues with highest levels in heart, small intestine, colon, liver and prostate. Reduced expression in brain tumors and neuroblastomas. Expressed in epididymis (at protein level).

Goat Anti-Netrin 1 Antibody - Protocols

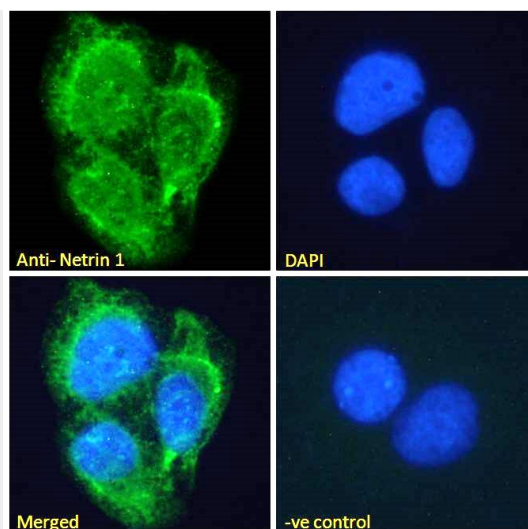
Provided below are standard protocols that you may find useful for product applications.

- [Western Blot](#)
- [Blocking Peptides](#)
- [Dot Blot](#)
- [Immunohistochemistry](#)
- [Immunofluorescence](#)
- [Immunoprecipitation](#)
- [Flow Cytometry](#)
- [Cell Culture](#)

Goat Anti-Netrin 1 Antibody - Images



AF1718a (3.75 µg/ml) staining of paraffin embedded Human Intestine. Steamed antigen retrieval with citrate buffer pH 6, AP-staining. **This data is from a previous batch, not on sale.**



AF1718a Immunofluorescence analysis of paraformaldehyde fixed U2OS cells, permeabilized with 0.15% Triton. Primary incubation 1hr (10ug/ml) followed by Alexa Fluor 488 secondary antibody (2ug/ml), showing membrane and secreted staining. The nuclear stain

Goat Anti-Netrin 1 Antibody - Background

Netrin is included in a family of laminin-related secreted proteins. The function of this gene has not yet been defined; however, netrin is thought to be involved in axon guidance and cell migration during development. Mutations and loss of expression of netrin suggest that variation in netrin may be involved in cancer development.

Goat Anti-Netrin 1 Antibody - References

Netrin-1 mediates early events in pancreatic adenocarcinoma progression, acting on tumor and endothelial cells. Dumartin L, et al. Gastroenterology, 2010 Apr. PMID 20080097.
Netrin-1 dampens pulmonary inflammation during acute lung injury. Mirakaj V, et al. Am J Respir Crit Care Med, 2010 Apr 15. PMID 20075388.
Association of polymorphisms in the SLIT2 axonal guidance gene with anger in suicide attempters. Sokolowski M, et al. Mol Psychiatry, 2010 Jan. PMID 20029409.
Urinary netrin-1 is an early predictive biomarker of acute kidney injury after cardiac surgery. Ramesh G, et al. Clin J Am Soc Nephrol, 2010 Mar. PMID 20007677.
Functional implication of Netrin expression in malignant melanoma. Kaufmann S, et al. Cell Oncol, 2009. PMID 19940358.