

Goat Anti-Neurobeachin Antibody
Peptide-affinity purified goat antibody
Catalog # AF1721a**Specification**

Goat Anti-Neurobeachin Antibody - Product Information

Application	WB, IHC, E
Primary Accession	Q8NFP9
Other Accession	NP_056493 , 26960 , 26422 (mouse)
Reactivity	Human, Mouse
Predicted	Dog
Host	Goat
Clonality	Polyclonal
Concentration	100ug/200ul
Isotype	IgG
Calculated MW	327822

Goat Anti-Neurobeachin Antibody - Additional Information**Gene ID** 26960**Other Names**

Neurobeachin, Lysosomal-trafficking regulator 2, Protein BCL8B, NBEA, BCL8B, KIAA1544, LYST2

DilutionWB~~1:1000
IHC~~1:100~500
E~~N/A**Format**

0.5 mg IgG/ml in Tris saline (20mM Tris pH7.3, 150mM NaCl), 0.02% sodium azide, with 0.5% bovine serum albumin

Storage

Maintain refrigerated at 2-8°C for up to 6 months. For long term storage store at -20°C in small aliquots to prevent freeze-thaw cycles.

Precautions

Goat Anti-Neurobeachin Antibody is for research use only and not for use in diagnostic or therapeutic procedures.

Goat Anti-Neurobeachin Antibody - Protein Information**Name** NBEA ([HGNC:7648](#))**Synonyms** BCL8B, KIAA1544, LYST2

Function

Binds to type II regulatory subunits of protein kinase A and anchors/targets them to the membrane. May anchor the kinase to cytoskeletal and/or organelle-associated proteins (By similarity).

Cellular Location

Cytoplasm. Membrane; Peripheral membrane protein

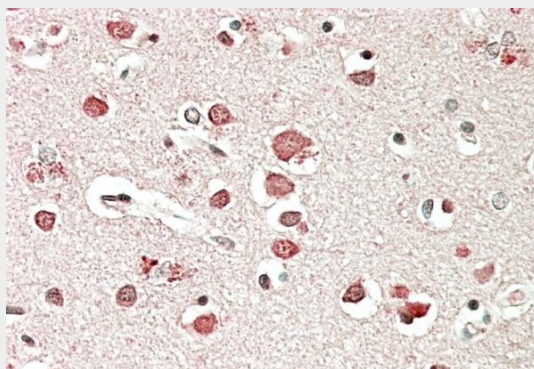
Tissue Location

Predominant in many brain structures. Also expressed at medium levels in spleen, thymus, prostate, testis and ovary. Low level expression is seen in heart, kidney, pancreas, skeletal muscle and intestine.

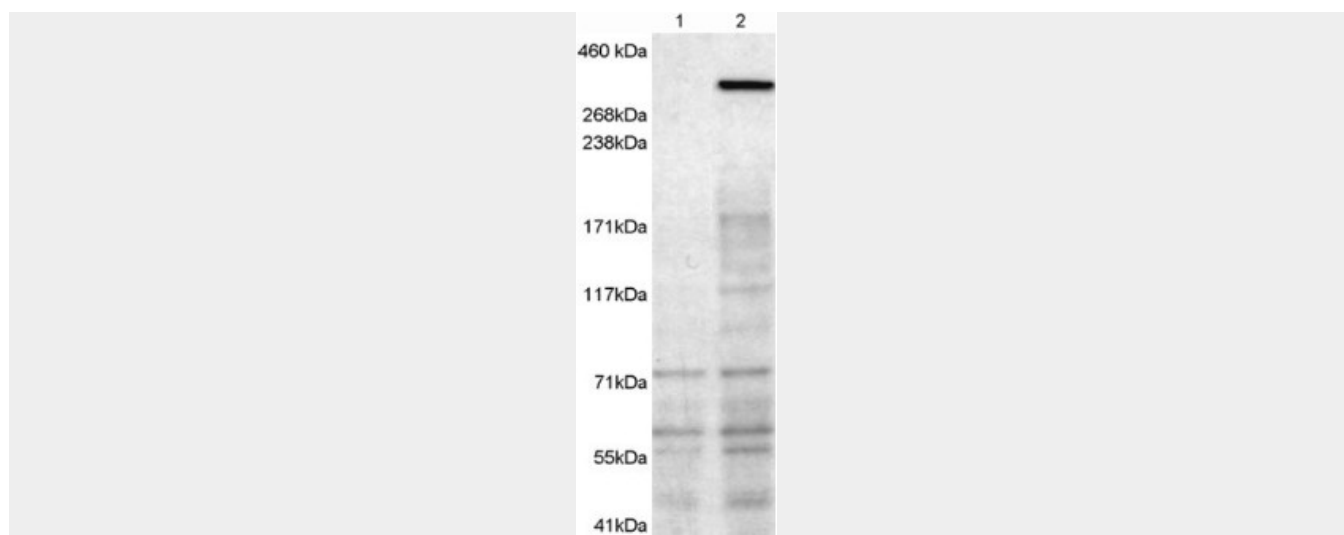
Goat Anti-Neurobeachin Antibody - Protocols

Provided below are standard protocols that you may find useful for product applications.

- [Western Blot](#)
- [Blocking Peptides](#)
- [Dot Blot](#)
- [Immunohistochemistry](#)
- [Immunofluorescence](#)
- [Immunoprecipitation](#)
- [Flow Cytometry](#)
- [Cell Culture](#)

Goat Anti-Neurobeachin Antibody - Images

AF1721a (5 µg/ml) staining of paraffin embedded Human Cerebral Cortex. Steamed antigen retrieval with citrate buffer pH 6, AP-staining.



AF1721a (1 µg/ml) staining of 1) untransfected HEK293T cells 2) HEK293T cells transfected with mouse NBEA. Detected by chemiluminescence. Data kindly provided by Professor John Creemers, K.U. Leuven, Belgium

Goat Anti-Neurobeachin Antibody - Background

This gene encodes a member of a large, diverse group of A-kinase anchor proteins that target the activity of protein kinase A to specific subcellular sites by binding to its type II regulatory subunits. Brain-specific expression and coat protein-like membrane recruitment of a highly similar protein in mouse suggest an involvement in neuronal post-Golgi membrane traffic. Mutations in this gene may be associated with a form of autism. Alternatively spliced transcript variants may exist, but their full-length nature has not been determined.

Goat Anti-Neurobeachin Antibody - References

Variation at the NFATC2 Locus Increases the Risk of Thiazolinedione-Induced Edema in the Diabetes REduction Assessment with ramipril and rosiglitazone Medication (DREAM) Study. Bailey SD, et al. Diabetes Care, 2010 Jul 13. PMID 20628086.

Replication of previous genome-wide association studies of bone mineral density in premenopausal American women. Ichikawa S, et al. J Bone Miner Res, 2010 Aug. PMID 20200978.

Common genetic variation and the control of HIV-1 in humans. Fellay J, et al. PLoS Genet, 2009 Dec. PMID 20041166.

Gene-centric association signals for lipids and apolipoproteins identified via the HumanCVD BeadChip. Talmud PJ, et al. Am J Hum Genet, 2009 Nov. PMID 19913121.

Neurobeachin (NBEA) is a target of recurrent interstitial deletions at 13q13 in patients with MGUS and multiple myeloma. O'Neal J, et al. Exp Hematol, 2009 Feb. PMID 19135901.