

Goat Anti-PDE4D Antibody
Peptide-affinity purified goat antibody
Catalog # AF1802a**Specification**

Goat Anti-PDE4D Antibody - Product Information

Application	WB, E, EIA
Primary Accession	Q08499
Other Accession	NP_001159371 , 5144
Reactivity	Human, Mouse
Host	Goat
Clonality	Polyclonal
Concentration	100ug/200ul
Isotype	IgG
Calculated MW	91115

Goat Anti-PDE4D Antibody - Additional Information**Gene ID** 5144**Other Names**

cAMP-specific 3', 5'-cyclic phosphodiesterase 4D, 3.1.4.53, DPDE3, PDE43, PDE4D, DPDE3

Dilution

WB~~1:1000

E~~N/A

EIA~~N/A

Format

0.5 mg IgG/ml in Tris saline (20mM Tris pH7.3, 150mM NaCl), 0.02% sodium azide, with 0.5% bovine serum albumin

Storage

Maintain refrigerated at 2-8°C for up to 6 months. For long term storage store at -20°C in small aliquots to prevent freeze-thaw cycles.

Precautions

Goat Anti-PDE4D Antibody is for research use only and not for use in diagnostic or therapeutic procedures.

Goat Anti-PDE4D Antibody - Protein Information**Name** PDE4D ([HGNC:8783](#))**Synonyms** DPDE3**Function**

Hydrolyzes the second messenger cAMP, which is a key regulator of many important physiological processes.

Cellular Location

Apical cell membrane. Cytoplasm. Membrane. Cytoplasm, cytoskeleton. Cytoplasm, cytoskeleton, microtubule organizing center, centrosome Note=Found in the soluble fraction, associated with membranes, and associated with the cytoskeleton and the centrosome (By similarity) Colocalized with SHANK2 to the apical membrane of colonic crypt cells

Tissue Location

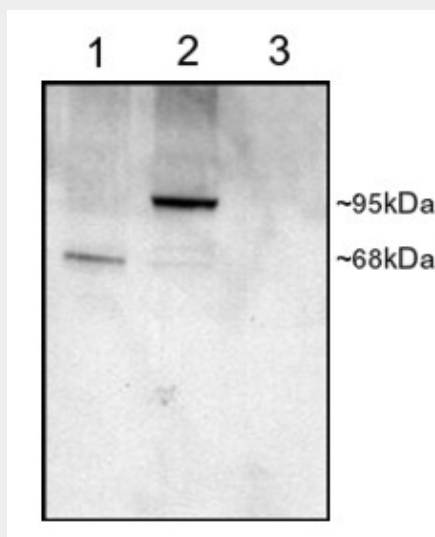
Expressed in colonic epithelial cells (at protein level). Widespread; most abundant in skeletal muscle [Isoform 8]: Detected in brain, placenta, lung and kidney.

Goat Anti-PDE4D Antibody - Protocols

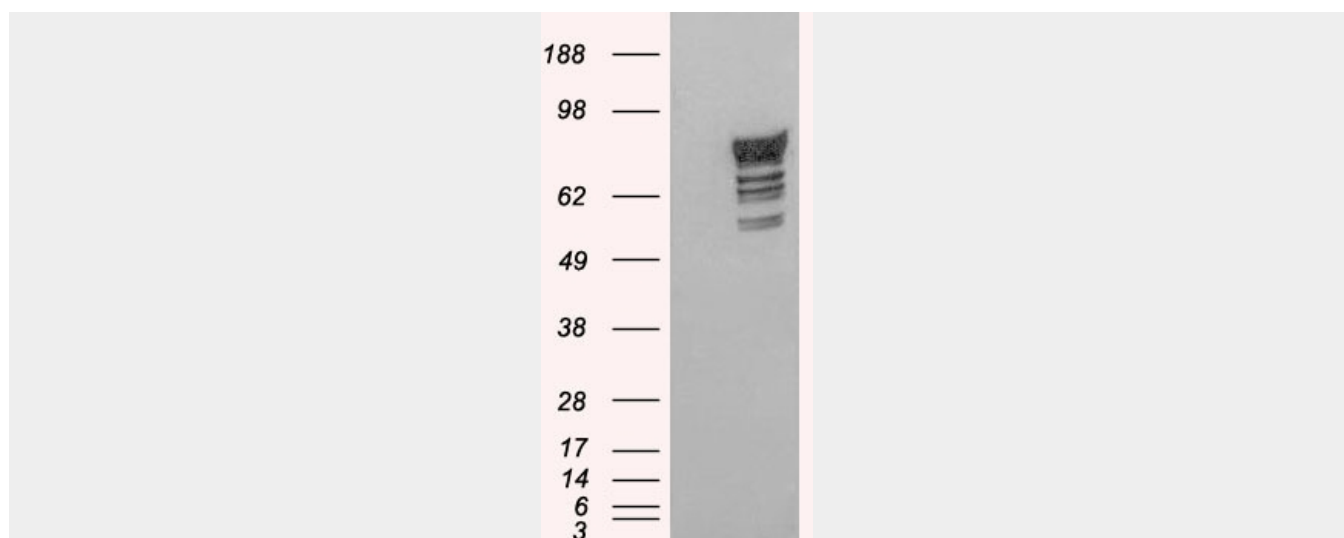
Provided below are standard protocols that you may find useful for product applications.

- [Western Blot](#)
- [Blocking Peptides](#)
- [Dot Blot](#)
- [Immunohistochemistry](#)
- [Immunofluorescence](#)
- [Immunoprecipitation](#)
- [Flow Cytometry](#)
- [Cell Culture](#)

Goat Anti-PDE4D Antibody - Images



AF1802a staining (1 μ g/ml) of COS cell lysates (25 μ g protein): transfected with Human PDE4D1 (1), transfected with Human PDE4D3 (2), untransfected (3). Primary incubation was 1 hour. Detected by chemiluminescence.



HEK293 overexpressing Human PDE4D2 (RC212410) and probed with AF1802a (mock transfection in first lane), tested by Origene.

Goat Anti-PDE4D Antibody - Background

This gene encodes one of four mammalian counterparts to the fruit fly 'dunce' gene. The encoded protein has 3',5'-cyclic-AMP phosphodiesterase activity and degrades cAMP, which acts as a signal transduction molecule in multiple cell types. This gene uses different promoters to generate multiple alternatively spliced transcript variants that encode functional proteins.

Goat Anti-PDE4D Antibody - References

Analyses of shared genetic factors between asthma and obesity in children. Meln E, et al. J Allergy Clin Immunol, 2010 Sep. PMID 20816195.
[Phosphodiesterase 4D (PDE4D) gene polymorphism in patients with acute stroke from Moscow] . Genetika, 2010 Jun. PMID 20734779.
A genome-wide association study of neuroticism in a population-based sample. Calboli FC, et al. PLoS One, 2010 Jul 9. PMID 20634892.
Variation at the NFATC2 Locus Increases the Risk of Thiazolinedione-Induced Edema in the Diabetes REduction Assessment with ramipril and rosiglitazone Medication (DREAM) Study. Bailey SD, et al. Diabetes Care, 2010 Jul 13. PMID 20628086.
Sex-differential genetic effect of phosphodiesterase 4D (PDE4D) on carotid atherosclerosis. Liao YC, et al. BMC Med Genet, 2010 Jun 12. PMID 20540798.