

Goat Anti-PEBP1 / RKIP (Internal) Antibody
Peptide-affinity purified goat antibody
Catalog # AF1810a**Specification**

Goat Anti-PEBP1 / RKIP (Internal) Antibody - Product Information

Application	WB, IHC, E
Primary Accession	P30086
Other Accession	NP_002558 , 5037 , 23980 (mouse) , 29542 (rat)
Reactivity	Human
Predicted	Mouse, Rat, Pig, Dog
Host	Goat
Clonality	Polyclonal
Concentration	0.5 mg/ml
Isotype	IgG
Calculated MW	21057

Goat Anti-PEBP1 / RKIP (Internal) Antibody - Additional Information**Gene ID** 5037**Other Names**

Phosphatidylethanolamine-binding protein 1, PEBP-1, HCNPpp, Neuropolypeptide h3, Prostatic-binding protein, Raf kinase inhibitor protein, RKIP, Hippocampal cholinergic neurostimulating peptide, HCNP, PEBP1, PBP, PEBP

Dilution

WB~~1:1000
IHC~~1:100~500
E~~N/A

Format

0.5 mg IgG/ml in Tris saline (20mM Tris pH7.3, 150mM NaCl), 0.02% sodium azide, with 0.5% bovine serum albumin

Storage

Maintain refrigerated at 2-8°C for up to 6 months. For long term storage store at -20°C in small aliquots to prevent freeze-thaw cycles.

Precautions

Goat Anti-PEBP1 / RKIP (Internal) Antibody is for research use only and not for use in diagnostic or therapeutic procedures.

Goat Anti-PEBP1 / RKIP (Internal) Antibody - Protein Information**Name** PEBP1

Synonyms PBP, PEBP**Function**

Binds ATP, opioids and phosphatidylethanolamine. Has lower affinity for phosphatidylinositol and phosphatidylcholine. Serine protease inhibitor which inhibits thrombin, neuropsin and chymotrypsin but not trypsin, tissue type plasminogen activator and elastase (By similarity). Inhibits the kinase activity of RAF1 by inhibiting its activation and by dissociating the RAF1/MEK complex and acting as a competitive inhibitor of MEK phosphorylation.

Cellular Location

Cytoplasm.

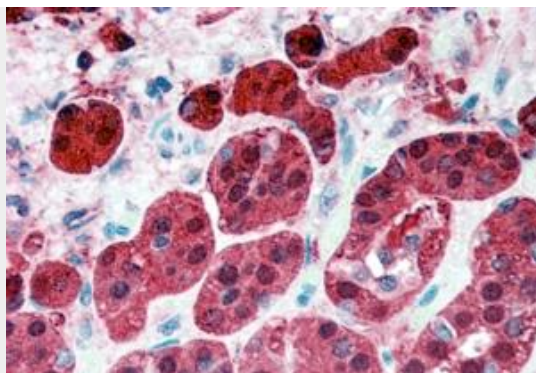
Goat Anti-PEBP1 / RKIP (Internal) Antibody - Protocols

Provided below are standard protocols that you may find useful for product applications.

- [Western Blot](#)
- [Blocking Peptides](#)
- [Dot Blot](#)
- [Immunohistochemistry](#)
- [Immunofluorescence](#)
- [Immunoprecipitation](#)
- [Flow Cytometry](#)
- [Cell Culture](#)

Goat Anti-PEBP1 / RKIP (Internal) Antibody - Images

AF1810a (0.01 µg/ml) staining of Human Prostate lysate (35 µg protein in RIPA buffer). Primary incubation was 1 hour. Detected by chemiluminescence.



AF1810a (2.5 µg/ml) staining of paraffin embedded Human Adrenal Gland. Steamed antigen retrieval with citrate buffer pH 6, AP-staining.

Goat Anti-PEBP1 / RKIP (Internal) Antibody - References

Characterization of the Raf kinase inhibitory protein (RKIP) binding pocket: NMR-based screening identifies small-molecule ligands. Shemon AN, et al. PLoS One, 2010 May 5. PMID 20463977.
RKIP inhibits NF-kappaB in cancer cells by regulating upstream signaling components of the IkappaB kinase complex. Tang H, et al. FEBS Lett, 2010 Feb 19. PMID 20043910.
Reduction of Raf kinase inhibitor protein expression by Bcr-Abl contributes to chronic myelogenous leukemia proliferation. Takemura T, et al. J Biol Chem, 2010 Feb 26. PMID 20028985.
Raf kinase inhibitor protein enhances neuronal differentiation in human SH-SY5Y cells. Hellmann J, et al. Dev Neurosci, 2010 Mar. PMID 19955695.
Loss of RKIP expression is associated with poor survival in GISTs. Martinho O, et al. Virchows Arch, 2009 Sep. PMID 19705153.