

Goat Anti-PINX1 Antibody
Peptide-affinity purified goat antibody
Catalog # AF1831a**Specification**

Goat Anti-PINX1 Antibody - Product Information

Application	WB, E
Primary Accession	Q96BK5
Other Accession	NP_060354 , 54984
Reactivity	Human
Predicted	Mouse, Rat, Pig, Dog
Host	Goat
Clonality	Polyclonal
Concentration	0.5mg/ml
Isotype	IgG
Calculated MW	37035

Goat Anti-PINX1 Antibody - Additional Information**Gene ID** 54984**Other Names**PIN2/TERF1-interacting telomerase inhibitor 1, Liver-related putative tumor suppressor,
Pin2-interacting protein X1, Protein 67-11-3, TRF1-interacting protein 1, PINX1, LPTL, LPTS**Dilution**

WB~~1:1000

E~~N/A

Format

0.5 mg IgG/ml in Tris saline (20mM Tris pH7.3, 150mM NaCl), 0.02% sodium azide, with 0.5% bovine serum albumin

Storage

Maintain refrigerated at 2-8°C for up to 6 months. For long term storage store at -20°C in small aliquots to prevent freeze-thaw cycles.

Precautions

Goat Anti-PINX1 Antibody is for research use only and not for use in diagnostic or therapeutic procedures.

Goat Anti-PINX1 Antibody - Protein Information**Name** PINX1**Synonyms** LPTL, LPTS

Function

Microtubule-binding protein essential for faithful chromosome segregation. Mediates TRF1 and TERT accumulation in nucleolus and enhances TRF1 binding to telomeres. Inhibits telomerase activity. May inhibit cell proliferation and act as tumor suppressor.

Cellular Location

Nucleus. Nucleus, nucleolus. Chromosome, telomere. Chromosome, centromere, kinetochore
Note=Localizes in nucleoli, at telomere speckles and to the outer plate of kinetochores.
Localization to the kinetochore is mediated by its central region and depends on NDC80 and CENPE

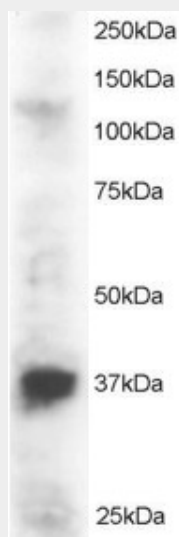
Tissue Location

Ubiquitous; expressed at low levels. Not detectable in a number of hepatocarcinoma cell lines

Goat Anti-PINX1 Antibody - Protocols

Provided below are standard protocols that you may find useful for product applications.

- [Western Blot](#)
- [Blocking Peptides](#)
- [Dot Blot](#)
- [Immunohistochemistry](#)
- [Immunofluorescence](#)
- [Immunoprecipitation](#)
- [Flow Cytometry](#)
- [Cell Culture](#)

Goat Anti-PINX1 Antibody - Images

AF1831a staining (2 µg/ml) of Jurkat lysate (RIPA buffer, 30 µg total protein per lane). Primary incubated for 1 hour. Detected by western blot using chemiluminescence.

Goat Anti-PINX1 Antibody - References

C-terminal amino acids 290-328 of LPTS/PinX1 confer telomerase inhibition. Chen G, et al. Biochem Biophys Res Commun, 2010 Aug 6. PMID 20620128. Personalized smoking cessation: interactions between nicotine dose, dependence and quit-success genotype score. Rose JE, et al. Mol Med, 2010

Jul-Aug. PMID 20379614. Decreased expression of PinX1 protein is correlated with tumor development and is a new independent poor prognostic factor in ovarian carcinoma. Cai MY, et al. Cancer Sci, 2010 Jun. PMID 20367640. Multiple genetic variants in telomere pathway genes and breast cancer risk. Shen J, et al. Cancer Epidemiol Biomarkers Prev, 2010 Jan. PMID 20056641. PinX1 is a novel microtubule-binding protein essential for accurate chromosome segregation. Yuan K, et al. J Biol Chem, 2009 Aug 21. PMID 19553660.