

Goat Anti-Radixin Antibody
Peptide-affinity purified goat antibody
Catalog # AF1903a**Specification**

Goat Anti-Radixin Antibody - Product Information

Application	WB, E
Primary Accession	P35241
Other Accession	NP_002897 , 5962 , 19684 (mouse) , 315655 (rat)
Reactivity	Human, Mouse, Rat
Predicted	Dog
Host	Goat
Clonality	Polyclonal
Concentration	100ug/200ul
Isotype	IgG
Calculated MW	68564

Goat Anti-Radixin Antibody - Additional Information**Gene ID** 5962**Other Names**

Radixin, RDX

Dilution

WB~~1:1000

E~~N/A

Format

0.5 mg IgG/ml in Tris saline (20mM Tris pH7.3, 150mM NaCl), 0.02% sodium azide, with 0.5% bovine serum albumin

Storage

Maintain refrigerated at 2-8°C for up to 6 months. For long term storage store at -20°C in small aliquots to prevent freeze-thaw cycles.

Precautions

Goat Anti-Radixin Antibody is for research use only and not for use in diagnostic or therapeutic procedures.

Goat Anti-Radixin Antibody - Protein Information**Name** RDX**Function**

Probably plays a crucial role in the binding of the barbed end of actin filaments to the plasma membrane.

Cellular Location

Cell membrane; Peripheral membrane protein; Cytoplasmic side. Cytoplasm, cytoskeleton. Cleavage furrow. Cell projection, microvillus {ECO:0000250|UniProtKB:P26043}. Cell projection, stereocilium {ECO:0000250|UniProtKB:P26043}. Note=Enriched at the stereocilium base with very low levels in the shaft of stereociliary bundles (By similarity). Highly concentrated in the undercoat of the cell-to-cell adherens junction and the cleavage furrow in the interphase and mitotic phase, respectively {ECO:0000250|UniProtKB:P26043}

Goat Anti-Radixin Antibody - Protocols

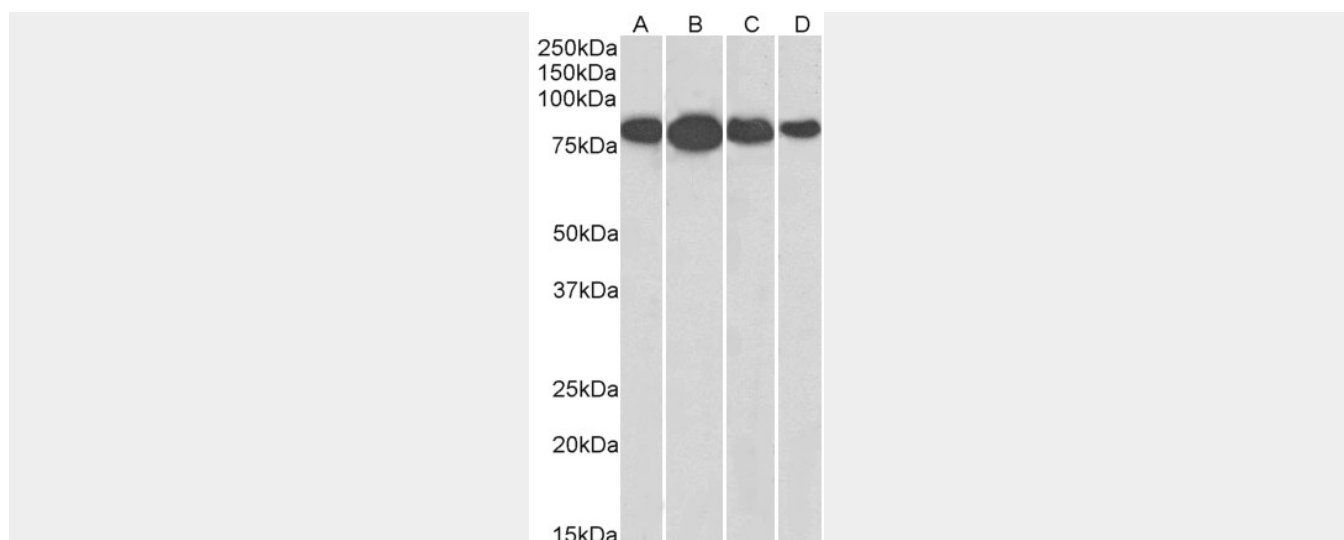
Provided below are standard protocols that you may find useful for product applications.

- [Western Blot](#)
- [Blocking Peptides](#)
- [Dot Blot](#)
- [Immunohistochemistry](#)
- [Immunofluorescence](#)
- [Immunoprecipitation](#)
- [Flow Cytometry](#)
- [Cell Culture](#)

Goat Anti-Radixin Antibody - Images



AF1903a (0.03 µg/ml) staining of Human Tonsil lysate (35 µg protein in RIPA buffer). Primary incubation was 1 hour. Detected by chemiluminescence.



AF1903a (0.01 µg/ml) staining of NIH3T3 (A), HeLa (B), Jurkat (C), and A431 (D) lysates (35 µg protein in RIPA buffer). Primary incubation was 1 hour. Detected by chemiluminescence.

Goat Anti-Radixin Antibody - Background

Radixin is a cytoskeletal protein that may be important in linking actin to the plasma membrane. It is highly similar in sequence to both ezrin and moesin. The radixin gene has been localized by fluorescence in situ hybridization to 11q23. A truncated version representing a pseudogene (RDXP2) was assigned to Xp21.3. Another pseudogene that seemed to lack introns (RDXP1) was mapped to 11p by Southern and PCR analyses.

Goat Anti-Radixin Antibody - References

Phosphorylation of ezrin/radixin/moesin proteins by LRRK2 promotes the rearrangement of actin cytoskeleton in neuronal morphogenesis. Parisiadou L, et al. J Neurosci, 2009 Nov 4. PMID 19890007.

Regulation of NK cell trafficking by CD81. Krümer B, et al. Eur J Immunol, 2009 Dec. PMID 19830727.

Evaluation of nine candidate genes in patients with normal tension glaucoma: a case control study. Wolf C, et al. BMC Med Genet, 2009 Sep 15. PMID 19754948.

Defining the human deubiquitinating enzyme interaction landscape. Sowa ME, et al. Cell, 2009 Jul 23. PMID 19615732.

LOK is a major ERM kinase in resting lymphocytes and regulates cytoskeletal rearrangement through ERM phosphorylation. Belkina NV, et al. Proc Natl Acad Sci U S A, 2009 Mar 24. PMID 19255442.