

Goat Anti-RBP1 Antibody
Peptide-affinity purified goat antibody
Catalog # AF1919a**Specification**

Goat Anti-RBP1 Antibody - Product Information

Application	WB, IHC, E
Primary Accession	P09455
Other Accession	NP_002890 , 5947
Reactivity	Human, Mouse
Host	Goat
Clonality	Polyclonal
Concentration	100ug/200ul
Isotype	IgG
Calculated MW	15850

Goat Anti-RBP1 Antibody - Additional Information**Gene ID** 5947**Other Names**

Retinol-binding protein 1, Cellular retinol-binding protein, CRBP, Cellular retinol-binding protein I, CRBP-I, RBP1, CRBP1

DilutionWB~~1:1000
IHC~~1:100~500
E~~N/A**Format**

0.5 mg IgG/ml in Tris saline (20mM Tris pH7.3, 150mM NaCl), 0.02% sodium azide, with 0.5% bovine serum albumin

Storage

Maintain refrigerated at 2-8°C for up to 6 months. For long term storage store at -20°C in small aliquots to prevent freeze-thaw cycles.

Precautions

Goat Anti-RBP1 Antibody is for research use only and not for use in diagnostic or therapeutic procedures.

Goat Anti-RBP1 Antibody - Protein Information**Name** RBP1**Synonyms** CRBP1

Function

Cytoplasmic retinol-binding protein (PubMed:22665496, PubMed:26900151, PubMed:28057518). Accepts retinol from the transport protein STRA6, and thereby contributes to retinol uptake, storage and retinoid homeostasis (PubMed:15632377, PubMed:22665496).

Cellular Location

Cytoplasm. Lipid droplet

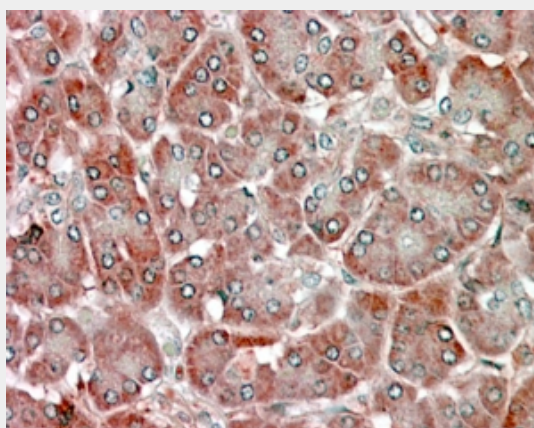
Tissue Location

Detected in nearly all the tissues with higher expression in adult ovary, pancreas, pituitary gland and adrenal gland, and fetal liver.

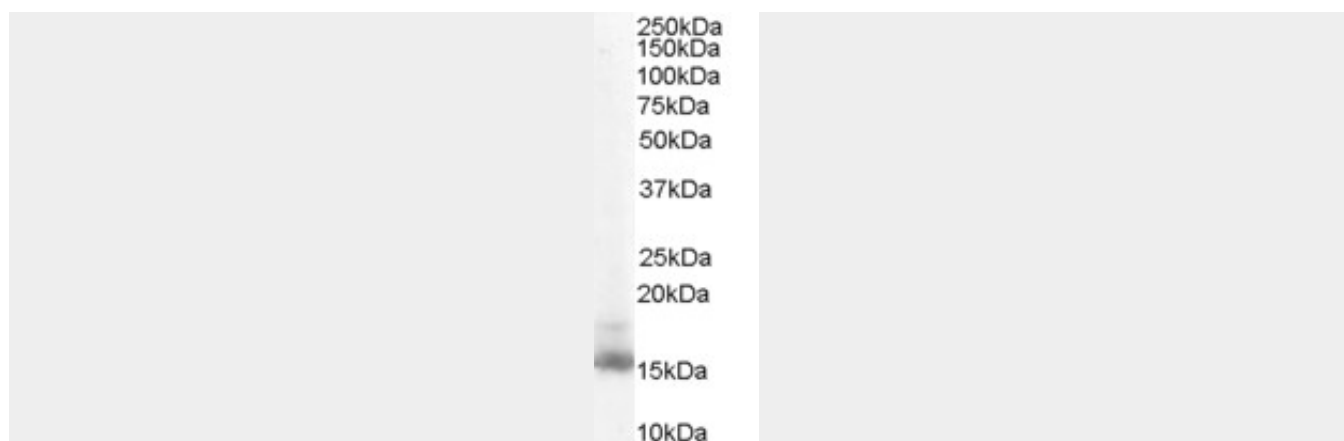
Goat Anti-RBP1 Antibody - Protocols

Provided below are standard protocols that you may find useful for product applications.

- [Western Blot](#)
- [Blocking Peptides](#)
- [Dot Blot](#)
- [Immunohistochemistry](#)
- [Immunofluorescence](#)
- [Immunoprecipitation](#)
- [Flow Cytometry](#)
- [Cell Culture](#)

Goat Anti-RBP1 Antibody - Images

AF1919a (5 µg/ml) staining of paraffin embedded Human Pancreas. Steamed antigen retrieval with citrate buffer pH 6, AP-staining.



AF1919a (0.1 µg/ml) staining of NIH 3T3 lysate (35 µg protein in RIPA buffer). Primary incubation was 1 hour. Detected by chemiluminescence.

Goat Anti-RBP1 Antibody - Background

This gene encodes the carrier protein involved in the transport of retinol (vitamin A alcohol) from the liver storage site to peripheral tissue. Vitamin A is a fat-soluble vitamin necessary for growth, reproduction, differentiation of epithelial tissues, and vision. Multiple transcript variants encoding different isoforms have been found for this gene.

Goat Anti-RBP1 Antibody - References

Variation at the NFATC2 Locus Increases the Risk of Thiazolinedione-Induced Edema in the Diabetes REduction Assessment with ramipril and rosiglitazone Medication (DREAM) Study. Bailey SD, et al. Diabetes Care, 2010 Jul 13. PMID 20628086.

Genetic variation in 3-hydroxy-3-methylglutaryl CoA reductase modifies the chemopreventive activity of statins for colorectal cancer. Lipkin SM, et al. Cancer Prev Res (Phila), 2010 May. PMID 20403997.

New insights on the protein-ligand interaction differences between the two primary cellular retinol carriers. Franzoni L, et al. J Lipid Res, 2010 Jun. PMID 19965581.

Gene-centric association signals for lipids and apolipoproteins identified via the HumanCVD BeadChip. Talmud PJ, et al. Am J Hum Genet, 2009 Nov. PMID 19913121.

Methylation of CLDN6, FBN2, RBP1, RBP4, TFPI2, and TMEFF2 in esophageal squamous cell carcinoma. Tsunoda S, et al. Oncol Rep, 2009 Apr. PMID 19288010.