

Goat Anti-SAMSN1 Antibody
Peptide-affinity purified goat antibody
Catalog # AF1955a**Specification**

Goat Anti-SAMSN1 Antibody - Product Information

Application	WB, E
Primary Accession	O9NSI8
Other Accession	NP_071419 , 64092
Reactivity	Human
Host	Goat
Clonality	Polyclonal
Concentration	100ug/200ul
Isotype	IgG
Calculated MW	41708

Goat Anti-SAMSN1 Antibody - Additional Information**Gene ID** 64092**Other Names**

SAM domain-containing protein SAMSN-1, Hematopoietic adaptor containing SH3 and SAM domains 1, Nash1, SAM domain, SH3 domain and nuclear localization signals protein 1, SH3-SAM adaptor protein, SAMSN1, HACSI

Dilution

WB~~1:1000

E~~N/A

Format

0.5 mg IgG/ml in Tris saline (20mM Tris pH7.3, 150mM NaCl), 0.02% sodium azide, with 0.5% bovine serum albumin

Storage

Maintain refrigerated at 2-8°C for up to 6 months. For long term storage store at -20°C in small aliquots to prevent freeze-thaw cycles.

Precautions

Goat Anti-SAMSN1 Antibody is for research use only and not for use in diagnostic or therapeutic procedures.

Goat Anti-SAMSN1 Antibody - Protein Information**Name** SAMSN1**Synonyms** HACSI

Function

Negative regulator of B-cell activation. Down-regulates cell proliferation (in vitro). Promotes RAC1-dependent membrane ruffle formation and reorganization of the actin cytoskeleton. Regulates cell spreading and cell polarization. Stimulates HDAC1 activity. Regulates LYN activity by modulating its tyrosine phosphorylation (By similarity).

Cellular Location

Nucleus. Cytoplasm. Cell projection, ruffle. Note=Shuttles between cytoplasm and nucleus. Colocalizes with the actin cytoskeleton and actin-rich membrane ruffles (By similarity).

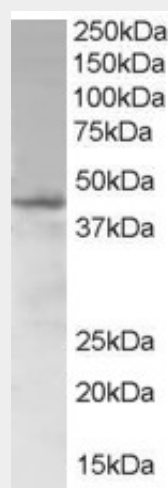
Tissue Location

Detected in peripheral blood B-cells (at protein level). Detected in spleen, liver and peripheral blood

Goat Anti-SAMSN1 Antibody - Protocols

Provided below are standard protocols that you may find useful for product applications.

- [Western Blot](#)
- [Blocking Peptides](#)
- [Dot Blot](#)
- [Immunohistochemistry](#)
- [Immunofluorescence](#)
- [Immunoprecipitation](#)
- [Flow Cytometry](#)
- [Cell Culture](#)

Goat Anti-SAMSN1 Antibody - Images

AF1955a (1 µg/ml) staining of Jurkat lysate (35 µg protein in RIPA buffer). Primary incubation was 1 hour. Detected by chemiluminescence.

Goat Anti-SAMSN1 Antibody - Background

SAMSN1 is a member of a novel gene family of putative adaptors and scaffold proteins containing SH3 and SAM (sterile alpha motif) domains (Claudio et al., 2001 [PubMed 11536050]).

Goat Anti-SAMSN1 Antibody - References

Personalized smoking cessation: interactions between nicotine dose, dependence and quit-success genotype score. Rose JE, et al. Mol Med, 2010 Jul-Aug. PMID 20379614.

Identification of SH3 domain interaction partners of human FasL (CD178) by phage display screening. Voss M, et al. BMC Immunol, 2009 Oct 6. PMID 19807924.

New sequence variants associated with bone mineral density. Styrkarsdottir U, et al. Nat Genet, 2009 Jan. PMID 19079262.

Detailed characterization of a homozygously deleted region corresponding to a candidate tumor suppressor locus at 21q11-21 in human lung cancer. Yamada H, et al. Genes Chromosomes Cancer, 2008 Sep. PMID 18523997.

The status, quality, and expansion of the NIH full-length cDNA project: the Mammalian Gene Collection (MGC). Gerhard DS, et al. Genome Res, 2004 Oct. PMID 15489334.