

Goat Anti-SCARF1 / SREC Antibody
Peptide-affinity purified goat antibody
Catalog # AF1963a**Specification**

Goat Anti-SCARF1 / SREC Antibody - Product Information

Application	WB, IF, ICC, E
Primary Accession	Q14162
Other Accession	NP_663327 , 8578
Reactivity	Human
Host	Goat
Clonality	Polyclonal
Concentration	100ug/200ul
Isotype	IgG
Calculated MW	87387

Goat Anti-SCARF1 / SREC Antibody - Additional Information**Gene ID** 8578**Other Names**

Scavenger receptor class F member 1, Acetyl LDL receptor, Scavenger receptor expressed by endothelial cells 1, SREC-I, SCARF1, KIAA0149, SREC

Dilution

WB~~1:1000
IF~~1:50~200
ICC~~N/A
E~~N/A

Format

0.5 mg IgG/ml in Tris saline (20mM Tris pH7.3, 150mM NaCl), 0.02% sodium azide, with 0.5% bovine serum albumin

Storage

Maintain refrigerated at 2-8°C for up to 6 months. For long term storage store at -20°C in small aliquots to prevent freeze-thaw cycles.

Precautions

Goat Anti-SCARF1 / SREC Antibody is for research use only and not for use in diagnostic or therapeutic procedures.

Goat Anti-SCARF1 / SREC Antibody - Protein Information**Name** SCARF1**Synonyms** KIAA0149, SREC

Function

Mediates the binding and degradation of acetylated low density lipoprotein (Ac-LDL). Mediates heterophilic interactions, suggesting a function as adhesion protein. Plays a role in the regulation of neurite-like outgrowth (By similarity).

Cellular Location

Membrane; Single-pass type I membrane protein

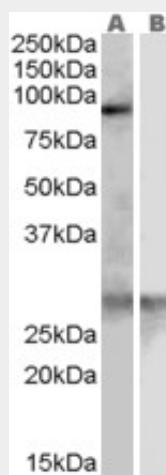
Tissue Location

Endothelial cells.

Goat Anti-SCARF1 / SREC Antibody - Protocols

Provided below are standard protocols that you may find useful for product applications.

- [Western Blot](#)
- [Blocking Peptides](#)
- [Dot Blot](#)
- [Immunohistochemistry](#)
- [Immunofluorescence](#)
- [Immunoprecipitation](#)
- [Flow Cytometry](#)
- [Cell Culture](#)

Goat Anti-SCARF1 / SREC Antibody - Images

AF1963a (0.3 µg/ml) staining of Human Heart lysate (35 µg protein in RIPA buffer) with (B) and without (A) blocking with the immunising peptide. Primary incubation was 1 hour. Detected by chemiluminescence.

Goat Anti-SCARF1 / SREC Antibody - Background

The protein encoded by this gene is a scavenger receptor that is expressed in endothelial cells and mediates the binding and degradation of acetylated low density lipoprotein (Ac-LDL). Transcription factors ZNF444/EZF-2 and SP1 are found to be responsible for the regulation of this gene. Five alternatively spliced transcript variants encoding distinct isoforms have been described.

Goat Anti-SCARF1 / SREC Antibody - References

The status, quality, and expansion of the NIH full-length cDNA project: the Mammalian Gene Collection (MGC). Gerhard DS, et al. Genome Res, 2004 Oct. PMID 15489334.

SREC-I, a type F scavenger receptor, is an endocytic receptor for calreticulin. Berwin B, et al. J Biol Chem, 2004 Dec 3. PMID 15371419.

Generation and initial analysis of more than 15,000 full-length human and mouse cDNA sequences. Strausberg RL, et al. Proc Natl Acad Sci U S A, 2002 Dec 24. PMID 12477932.

SREC-II, a new member of the scavenger receptor type F family, trans-interacts with SREC-I through its extracellular domain. Ishii J, et al. J Biol Chem, 2002 Oct 18. PMID 12154095.

Characterization of the human gene encoding the scavenger receptor expressed by endothelial cell and its regulation by a novel transcription factor, endothelial zinc finger protein-2. Adachi H, et al. J Biol Chem, 2002 Jul 5. PMID 11978792.