

**Goat Anti-SMAD9 Antibody**  
**Peptide-affinity purified goat antibody**  
**Catalog # AF2005a****Specification**

---

**Goat Anti-SMAD9 Antibody - Product Information**

Application	WB, IHC, Pep-ELISA
Primary Accession	<a href="#">O15198</a>
Other Accession	<a href="#">NP_005896</a> , <a href="#">4093</a>
Reactivity	Human
Predicted	Mouse, Rat, Dog
Host	Goat
Clonality	Polyclonal
Concentration	0.5 mg/ml
Isotype	IgG
Calculated MW	52493

**Goat Anti-SMAD9 Antibody - Additional Information****Gene ID** 4093**Other Names**

Mothers against decapentaplegic homolog 9, MAD homolog 9, Mothers against DPP homolog 9, Madh6, SMAD family member 9, SMAD 9, Smad9, SMAD9, MADH6, MADH9

**Dilution**

WB~~1:1000  
IHC~~1:100~500  
Pep-ELISA~~N/A

**Format**

0.5 mg IgG/ml in Tris saline (20mM Tris pH7.3, 150mM NaCl), 0.02% sodium azide, with 0.5% bovine serum albumin

**Storage**

Maintain refrigerated at 2-8°C for up to 6 months. For long term storage store at -20°C in small aliquots to prevent freeze-thaw cycles.

**Precautions**

Goat Anti-SMAD9 Antibody is for research use only and not for use in diagnostic or therapeutic procedures.

**Goat Anti-SMAD9 Antibody - Protein Information****Name** SMAD9**Synonyms** MADH6, MADH9, SMAD8 {ECO:0000303|PubMed:

**Function**

Transcriptional modulator activated by BMP (bone morphogenetic proteins) type 1 receptor kinase. SMAD9 is a receptor- regulated SMAD (R-SMAD).

**Cellular Location**

Cytoplasm. Nucleus. Note=In the cytoplasm in the absence of ligand. Migration to the nucleus when complexed with SMAD4 (By similarity).

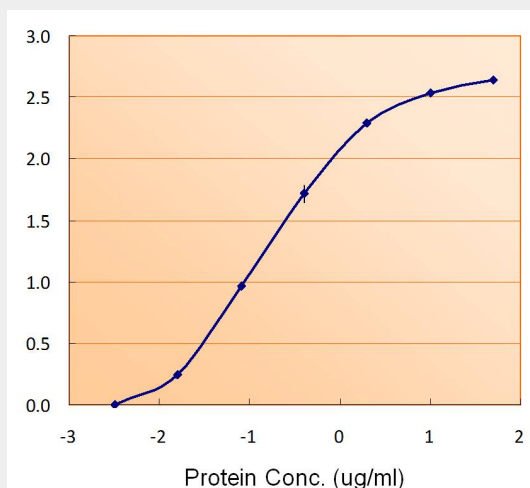
**Tissue Location**

Expressed in heart, brain, placenta, lung, skeletal muscle, prostate, testis, ovary and small intestine. Also expressed in fetal brain, lung and kidney

**Goat Anti-SMAD9 Antibody - Protocols**

Provided below are standard protocols that you may find useful for product applications.

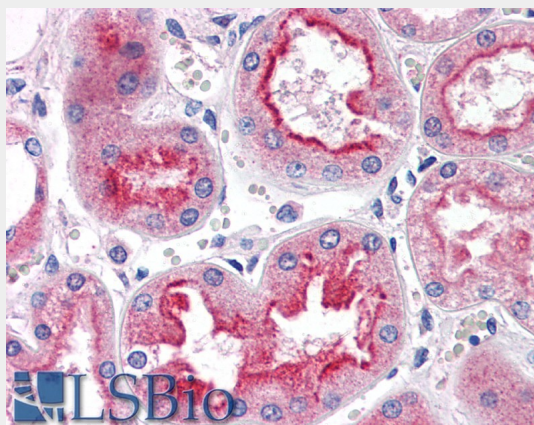
- [Western Blot](#)
- [Blocking Peptides](#)
- [Dot Blot](#)
- [Immunohistochemistry](#)
- [Immunofluorescence](#)
- [Immunoprecipitation](#)
- [Flow Cytometry](#)
- [Cell Culture](#)

**Goat Anti-SMAD9 Antibody - Images**

AF2005a (1.5ug/ml) as the reporter with EB002022 as the capture rabbit antibody (2.5ug/ml).



AF2005a (0.3µg/ml) staining of Human Skin lysate (35µg protein in RIPA buffer). Detected by chemiluminescence.



AF2005a (5µg/ml) staining of paraffin embedded Human Kidney. Steamed antigen retrieval with citrate buffer pH 6, AP-staining.

### Goat Anti-SMAD9 Antibody - Background

The protein encoded by this gene is a member of the SMAD family, which transduces signals from TGF-beta family members. The encoded protein is activated by bone morphogenetic proteins and interacts with SMAD4. Two transcript variants encoding different isoforms have been found for this gene.

### Goat Anti-SMAD9 Antibody - References

Personalized smoking cessation: interactions between nicotine dose, dependence and quit-success genotype score. Rose JE, et al. Mol Med, 2010 Jul-Aug. PMID 20379614.  
BMP4-Smad signaling pathway mediates adriamycin-induced premature senescence in lung cancer cells. Su D, et al. J Biol Chem, 2009 May 1. PMID 19269967.  
Serotonin induces Rho/ROCK-dependent activation of Smads 1/5/8 in pulmonary artery smooth muscle cells. Liu Y, et al. FASEB J, 2009 Jul. PMID 19244313.  
A new nonsense mutation of SMAD8 associated with pulmonary arterial hypertension. Shintani M, et al. J Med Genet, 2009 May. PMID 19211612.  
Holding their own: the noncanonical roles of Smad proteins. Hoover LL, et al. Sci Signal, 2008 Nov 18. PMID 19018011.