

Goat Anti-SORBS1 / Ponsin (C Terminus) Antibody
Peptide-affinity purified goat antibody
Catalog # AF2025a**Specification**

Goat Anti-SORBS1 / Ponsin (C Terminus) Antibody - Product Information

| | |
|-------------------|--|
| Application | IHC |
| Primary Accession | Q9BX66 |
| Other Accession | NP_001030129 , 10580 , 20411 (mouse) |
| Reactivity | Human |
| Predicted | Mouse, Rat, Pig |
| Host | Goat |
| Clonality | Polyclonal |
| Concentration | 100ug/200ul |
| Isotype | IgG |
| Calculated MW | 142513 |

Goat Anti-SORBS1 / Ponsin (C Terminus) Antibody - Additional Information**Gene ID** 10580**Other Names**

Sorbin and SH3 domain-containing protein 1, Ponsin, SH3 domain protein 5, SH3P12, c-Cbl-associated protein, CAP, SORBS1 (HGNC:14565)

Format

0.5 mg IgG/ml in Tris saline (20mM Tris pH7.3, 150mM NaCl), 0.02% sodium azide, with 0.5% bovine serum albumin

Storage

Maintain refrigerated at 2-8°C for up to 6 months. For long term storage store at -20°C in small aliquots to prevent freeze-thaw cycles.

Precautions

Goat Anti-SORBS1 / Ponsin (C Terminus) Antibody is for research use only and not for use in diagnostic or therapeutic procedures.

Goat Anti-SORBS1 / Ponsin (C Terminus) Antibody - Protein Information**Name** SORBS1 ([HGNC:14565](#))**Function**

Plays a role in tyrosine phosphorylation of CBL by linking CBL to the insulin receptor. Required for insulin-stimulated glucose transport. Involved in formation of actin stress fibers and focal adhesions (By similarity).

Cellular Location

Cell junction, adherens junction. Cell membrane. Cytoplasm, cytoskeleton. Cell junction, focal adhesion. Nucleus. Nucleus matrix. Note=Colocalizes with the Ten-1 ICD form of TENM1 in the nucleus (By similarity). Colocalizes with actin stress fibers. Also detected at the plasma membrane and in neuronal intranuclear inclusions. Colocalized with PXN at focal adhesions during myogenic differentiation.

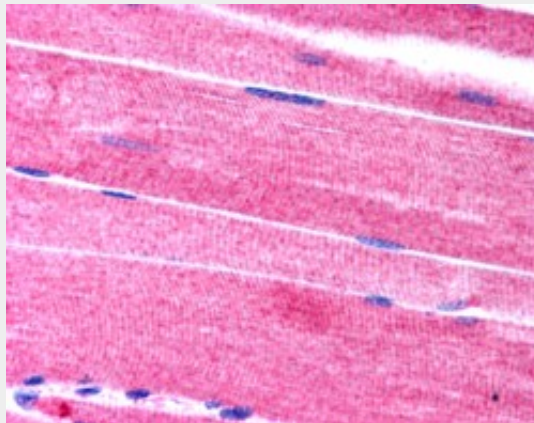
Tissue Location

Detected in skeletal muscle (at protein level). Widely expressed with highest levels in heart and skeletal muscle

Goat Anti-SORBS1 / Ponsin (C Terminus) Antibody - Protocols

Provided below are standard protocols that you may find useful for product applications.

- [Western Blot](#)
- [Blocking Peptides](#)
- [Dot Blot](#)
- [Immunohistochemistry](#)
- [Immunofluorescence](#)
- [Immunoprecipitation](#)
- [Flow Cytometry](#)
- [Cell Culture](#)

Goat Anti-SORBS1 / Ponsin (C Terminus) Antibody - Images

AF2025a (2.5 µg/ml) staining of paraffin embedded human skeletal muscle. Steamed antigen retrieval with citrate buffer pH 6, AP-staining.

Goat Anti-SORBS1 / Ponsin (C Terminus) Antibody - References

Personalized smoking cessation: interactions between nicotine dose, dependence and quit-success genotype score. Rose JE, et al. Mol Med, 2010 Jul-Aug. PMID 20379614.
Human variation in alcohol response is influenced by variation in neuronal signaling genes. Joslyn G, et al. Alcohol Clin Exp Res, 2010 May. PMID 20201926.
Ponsin interacts with Nck adapter proteins: implications for a role in cytoskeletal remodelling during differentiation of skeletal muscle cells. Gehmlich K, et al. Eur J Cell Biol, 2010 May. PMID 20129698.
Cbl-associated protein is tyrosine phosphorylated by c-Abl and c-Src kinases. Fernow I, et al. BMC Cell Biol, 2009 Nov 5. PMID 19891780.
Association of polymorphisms of SORBS1, GCK and WISP1 with hypertension in community-dwelling Japanese individuals. Yamada Y, et al. Hypertens Res, 2009 May. PMID 19282865.