

Goat Anti-TFEC Antibody
Peptide-affinity purified goat antibody
Catalog # AF2081a**Specification**

Goat Anti-TFEC Antibody - Product Information

Application	WB, E
Primary Accession	O14948
Other Accession	NP_001018068 , 22797
Reactivity	Human
Host	Goat
Clonality	Polyclonal
Concentration	100ug/200ul
Isotype	IgG
Calculated MW	38788

Goat Anti-TFEC Antibody - Additional Information**Gene ID** 22797**Other Names**

Transcription factor EC, TFE-C, Class E basic helix-loop-helix protein 34, bHLHe34, Transcription factor EC-like, hTFEC-L, TFEC, BHLHE34, TC FEC, TFECL

Dilution

WB~~1:1000

E~~N/A

Format

0.5 mg IgG/ml in Tris saline (20mM Tris pH7.3, 150mM NaCl), 0.02% sodium azide, with 0.5% bovine serum albumin

Storage

Maintain refrigerated at 2-8°C for up to 6 months. For long term storage store at -20°C in small aliquots to prevent freeze-thaw cycles.

Precautions

Goat Anti-TFEC Antibody is for research use only and not for use in diagnostic or therapeutic procedures.

Goat Anti-TFEC Antibody - Protein Information**Name** TFEC**Synonyms** BHLHE34, TC FEC, TFECL**Function**

Transcriptional regulator that acts as a repressor or an activator. Acts as a transcriptional repressor on minimal promoter containing element F (that includes an E-box sequence). Binds to element F in an E-box sequence-specific manner. Acts as a transcriptional transactivator on the proximal promoter region of the tartrate-resistant acid phosphatase (TRAP) E-box containing promoter (By similarity). Collaborates with MITF in target gene activation (By similarity). Acts as a transcriptional repressor on minimal promoter containing mu E3 enhancer sequence (By similarity). Binds to mu E3 DNA sequence of the immunoglobulin heavy-chain gene enhancer (By similarity). Binds DNA in a homo- or heterodimeric form.

Cellular Location

Nucleus {ECO:0000255|PROSITE-ProRule:PRU00981, ECO:0000269|PubMed:11467950}

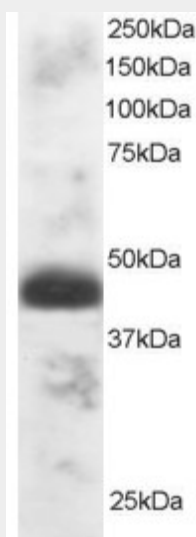
Tissue Location

Expressed moderately in spleen, kidney, bone marrow, small intestine and leukocytes. Expressed weakly in testis, trachea and colon.

Goat Anti-TFEC Antibody - Protocols

Provided below are standard protocols that you may find useful for product applications.

- [Western Blot](#)
- [Blocking Peptides](#)
- [Dot Blot](#)
- [Immunohistochemistry](#)
- [Immunofluorescence](#)
- [Immunoprecipitation](#)
- [Flow Cytometry](#)
- [Cell Culture](#)

Goat Anti-TFEC Antibody - Images

AF2081a staining (1 µg/ml) of Human Testis lysate (RIPA buffer, 30 µg total protein per lane). Primary incubated for 1 hour. Detected by western blot using chemiluminescence.

Goat Anti-TFEC Antibody - References

The DNA sequence of human chromosome 7. Hillier LW, et al. Nature, 2003 Jul 10. PMID 12853948.

Human chromosome 7: DNA sequence and biology. Scherer SW, et al. Science, 2003 May 2. PMID 12690205.

Generation and initial analysis of more than 15,000 full-length human and mouse cDNA sequences. Strausberg RL, et al. Proc Natl Acad Sci U S A, 2002 Dec 24. PMID 12477932.

The microphthalmia transcription factor and the related helix-loop-helix zipper factors TFE-3 and TFE-C collaborate to activate the tartrate-resistant acid phosphatase promoter. Mansky KC, et al. J Leukoc Biol, 2002 Feb. PMID 11818452.

TFEC can function as a transcriptional activator of the nonmuscle myosin II heavy chain-A gene in transfected cells. Chung MC, et al. Biochemistry, 2001 Jul 31. PMID 11467950.