

Goat Anti-Triosephosphate isomerase Antibody
Peptide-affinity purified goat antibody
Catalog # AF2113a**Specification**

Goat Anti-Triosephosphate isomerase Antibody - Product Information

Application	WB, IHC, FC, Pep-ELISA
Primary Accession	P60174
Other Accession	NP_001152759 , 7167
Reactivity	Human, Mouse
Predicted	Rat, Dog
Host	Goat
Clonality	Polyclonal
Concentration	0.5mg/ml
Isotype	IgG
Calculated MW	26669

Goat Anti-Triosephosphate isomerase Antibody - Additional Information**Gene ID** 7167**Other Names**

Triosephosphate isomerase, TIM, 5.3.1.1, Triose-phosphate isomerase, TPI1, TPI

DilutionWB~~1:1000
IHC~~1:100~500
FC~~1:10~50
Pep-ELISA~~N/A**Format**

0.5 mg IgG/ml in Tris saline (20mM Tris pH7.3, 150mM NaCl), 0.02% sodium azide, with 0.5% bovine serum albumin

Storage

Maintain refrigerated at 2-8°C for up to 6 months. For long term storage store at -20°C in small aliquots to prevent freeze-thaw cycles.

Precautions

Goat Anti-Triosephosphate isomerase Antibody is for research use only and not for use in diagnostic or therapeutic procedures.

Goat Anti-Triosephosphate isomerase Antibody - Protein Information**Name** TPI1**Synonyms** TPI

Function

Triosephosphate isomerase is an extremely efficient metabolic enzyme that catalyzes the interconversion between dihydroxyacetone phosphate (DHAP) and D-glyceraldehyde-3-phosphate (G3P) in glycolysis and gluconeogenesis.

Cellular Location

Cytoplasm {ECO:0000255|PROSITE-ProRule:PRU10127}.

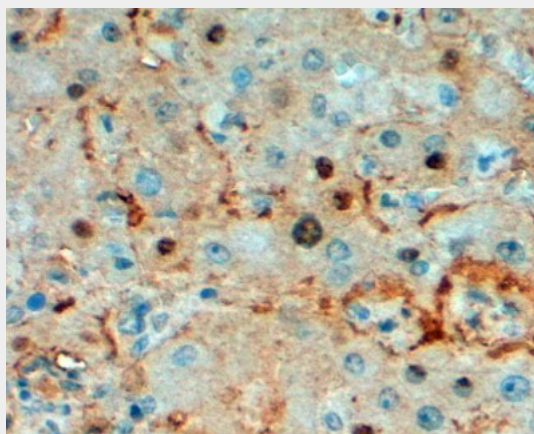
Goat Anti-Triosephosphate isomerase Antibody - Protocols

Provided below are standard protocols that you may find useful for product applications.

- [Western Blot](#)
- [Blocking Peptides](#)
- [Dot Blot](#)
- [Immunohistochemistry](#)
- [Immunofluorescence](#)
- [Immunoprecipitation](#)
- [Flow Cytometry](#)
- [Cell Culture](#)

Goat Anti-Triosephosphate isomerase Antibody - Images

AF2113a staining (0.003 µg/ml) of human liver lysate (RIPA buffer, 30 µg total protein per lane). Primary incubated for 1 hour. Detected by western blot using chemiluminescence.



AF2113a (2 µg/ml) staining of paraffin embedded Human Liver Steamed antigen retrieval with Tris/EDTA buffer pH 9, HRP-staining.

Goat Anti-Triosephosphate isomerase Antibody - Background

This gene encodes an enzyme, consisting of two identical proteins, which catalyzes the isomerization of glyceraldehydes 3-phosphate (G3P) and dihydroxy-acetone phosphate (DHAP) in glycolysis and gluconeogenesis. Mutations in this gene are associated with triosephosphate isomerase deficiency. Pseudogenes have been identified on chromosomes 1, 4, 6 and 7. Alternative splicing results in multiple transcript variants.

Goat Anti-Triosephosphate isomerase Antibody - References

Proteome analysis of the thalamus and cerebrospinal fluid reveals glycolysis dysfunction and potential biomarkers candidates for schizophrenia. Martins-de-Souza D, et al. J Psychiatr Res, 2010 May 14. PMID 20471030. Triose phosphate isomerase deficiency associated with two novel mutations in TPI gene. Fermo E, et al. Eur J Haematol, 2010 Aug. PMID 20374271. [Identification and expression of two new secretory proteins associated with prostate cancer] Qian XL, et al. Yi Chuan, 2010 Mar. PMID 20233700. Proteome analysis of schizophrenia patients Wernicke's area reveals an energy metabolism dysregulation. Martins-de-Souza D, et al. BMC Psychiatry, 2009 Apr 30. PMID 19405953. Analysis of TPI gene promoter variation in three sub-Saharan Africa population samples. Manco L, et al. Am J Hum Biol, 2009 Jan-Feb. PMID 18792062.