

Goat Anti-FGL1 / Hepassocin Antibody
Peptide-affinity purified goat antibody
Catalog # AF2200a**Specification**

Goat Anti-FGL1 / Hepassocin Antibody - Product Information

Application	WB, E
Primary Accession	Q08830
Other Accession	NP_004458 , 2267 , 234199 (mouse) , 246186 (rat)
Reactivity	Human
Predicted	Mouse, Rat, Dog
Host	Goat
Clonality	Polyclonal
Concentration	100ug/200ul
Isotype	IgG
Calculated MW	36379

Goat Anti-FGL1 / Hepassocin Antibody - Additional Information**Gene ID** 2267**Other Names**

Fibrinogen-like protein 1, HP-041, Hepassocin, Hepatocyte-derived fibrinogen-related protein 1, HFREP-1, Liver fibrinogen-related protein 1, LFIRE-1, FGL1, HFREP1

Dilution

WB~~1:1000

E~~N/A

Format

0.5 mg IgG/ml in Tris saline (20mM Tris pH7.3, 150mM NaCl), 0.02% sodium azide, with 0.5% bovine serum albumin

Storage

Maintain refrigerated at 2-8°C for up to 6 months. For long term storage store at -20°C in small aliquots to prevent freeze-thaw cycles.

Precautions

Goat Anti-FGL1 / Hepassocin Antibody is for research use only and not for use in diagnostic or therapeutic procedures.

Goat Anti-FGL1 / Hepassocin Antibody - Protein Information**Name** FGL1 {ECO:0000303|PubMed:18039467, ECO:0000312|HGNC:HGNC:3695}**Function**

Immune suppressive molecule that inhibits antigen-specific T- cell activation by acting as a major ligand of LAG3 (PubMed:30580966). Responsible for LAG3 T-cell inhibitory function (PubMed:30580966). Binds LAG3 independently from MHC class II (MHC-II) (PubMed:30580966). Secreted by, and promotes growth of, hepatocytes (PubMed:11470158, PubMed:19880967).

Cellular Location

Secreted. Note=Secreted in the blood plasma

Tissue Location

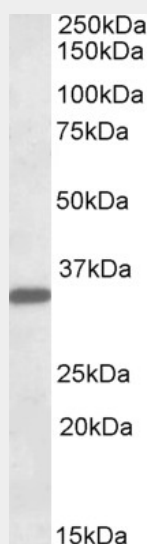
Under normal conditions, liver-specific.

Goat Anti-FGL1 / Hepassocin Antibody - Protocols

Provided below are standard protocols that you may find useful for product applications.

- [Western Blot](#)
- [Blocking Peptides](#)
- [Dot Blot](#)
- [Immunohistochemistry](#)
- [Immunofluorescence](#)
- [Immunoprecipitation](#)
- [Flow Cytometry](#)
- [Cell Culture](#)

Goat Anti-FGL1 / Hepassocin Antibody - Images



AF2200a (0.1 µg/ml) staining of Human Liver lysate (35 µg protein in RIPA buffer). Primary incubation was 1 hour. Detected by chemiluminescence.

Goat Anti-FGL1 / Hepassocin Antibody - Background

Fibrinogen-like 1 is a member of the fibrinogen family. This protein is homologous to the carboxy

terminus of the fibrinogen beta- and gamma- subunits which contains the four conserved cysteines of fibrinogens and fibrinogen related proteins. However, this protein lacks the platelet-binding site, cross-linking region and a thrombin-sensitive site which are necessary for fibrin clot formation. This protein may play a role in the development of hepatocellular carcinomas. Four alternatively spliced transcript variants encoding the same protein exist for this gene.

Goat Anti-FGL1 / Hepassocin Antibody - References

Variation at the NFATC2 Locus Increases the Risk of Thiazolinedione-Induced Edema in the Diabetes REduction Assessment with ramipril and rosiglitazone Medication (DREAM) Study. Bailey SD, et al. Diabetes Care, 2010 Jul 13. PMID 20628086.

Personalized smoking cessation: interactions between nicotine dose, dependence and quit-success genotype score. Rose JE, et al. Mol Med, 2010 Jul-Aug. PMID 20379614.

Gene-centric association signals for lipids and apolipoproteins identified via the HumanCVD BeadChip. Talmud PJ, et al. Am J Hum Genet, 2009 Nov. PMID 19913121.

Secreted protein acidic and rich in cysteine (SPARC) gene polymorphism association with hepatocellular carcinoma in Italian patients. Segat L, et al. J Gastroenterol Hepatol, 2009 Dec. PMID 19817957.

Specific expression and regulation of hepassocin in the liver and down-regulation of the correlation of HNF1alpha with decreased levels of hepassocin in human hepatocellular carcinoma. Yu HT, et al. J Biol Chem, 2009 May 15. PMID 19304666.