

**GCIP / MAID Antibody (C-Term)**  
**Peptide-affinity purified goat antibody**  
**Catalog # AF2293a****Specification**

---

**GCIP / MAID Antibody (C-Term) - Product Information**

Application	IHC
Primary Accession	<a href="#">O95273</a>
Other Accession	<a href="#">NP_036274.3</a> , <a href="#">NP_411241.1</a> , <a href="#">23582</a>
Reactivity	Human
Predicted	Dog
Host	Goat
Clonality	Polyclonal
Concentration	0.5 mg/ml
Isotype	IgG
Calculated MW	40262

**GCIP / MAID Antibody (C-Term) - Additional Information****Gene ID** 23582**Other Names**

Cyclin-D1-binding protein 1, Grap2 and cyclin-D-interacting protein, Human homolog of Maid, CCNDBP1, DIP1, GCIP, HHM

**Format**

0.5 mg/ml in Tris saline, 0.02% sodium azide, pH7.3 with 0.5% bovine serum albumin

**Storage**

Maintain refrigerated at 2-8°C for up to 6 months. For long term storage store at -20°C in small aliquots to prevent freeze-thaw cycles.

**Precautions**

GCIP / MAID Antibody (C-Term) is for research use only and not for use in diagnostic or therapeutic procedures.

**GCIP / MAID Antibody (C-Term) - Protein Information****Name** CCNDBP1**Synonyms** DIP1, GCIP, HHM**Function**

May negatively regulate cell cycle progression. May act at least in part via inhibition of the cyclin-D1/CDK4 complex, thereby preventing phosphorylation of RB1 and blocking E2F-dependent transcription.

**Cellular Location**

Cytoplasm. Nucleus.

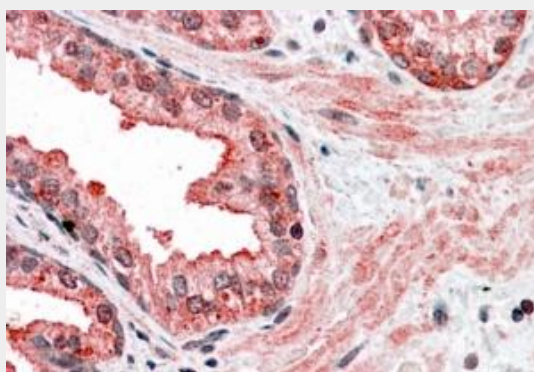
**Tissue Location**

Ubiquitously expressed. Expression is down-regulated in a variety of tumor types including breast, colon, prostate and rectal tumors, and is up-regulated in certain hepatic carcinomas

**GCIP / MAID Antibody (C-Term) - Protocols**

Provided below are standard protocols that you may find useful for product applications.

- [Western Blot](#)
- [Blocking Peptides](#)
- [Dot Blot](#)
- [Immunohistochemistry](#)
- [Immunofluorescence](#)
- [Immunoprecipitation](#)
- [Flow Cytometry](#)
- [Cell Culture](#)

**GCIP / MAID Antibody (C-Term) - Images**

AF2293a (3.8 µg/ml) staining of paraffin embedded Human Prostate. Steamed antigen retrieval with citrate buffer pH 6, AP-staining.

**GCIP / MAID Antibody (C-Term) - Background**

This antibody is expected to recognise both human isoforms of this protein.

**GCIP / MAID Antibody (C-Term) - References**

GCIP, a novel human gap2 and cyclin D interacting protein, regulates E2F-mediated transcriptional activity. Xia C, Bao Z, Tabassam F, Ma W, Qiu M, Hua S, Liu M. J Biol Chem. 2000 Jul 7;275(27):20942-8. PMID: 10801854