

MLL2 Antibody (N-Term)
Peptide-affinity purified goat antibody
Catalog # AF2296a**Specification**

MLL2 Antibody (N-Term) - Product Information

Application	IHC, E
Primary Accession	O14686
Other Accession	NP_003473.3 , 8085
Reactivity	Human
Host	Goat
Clonality	Polyclonal
Concentration	0.5 mg/ml
Isotype	IgG
Calculated MW	593389

MLL2 Antibody (N-Term) - Additional Information**Gene ID** 8085**Other Names**

Histone-lysine N-methyltransferase 2D, Lysine N-methyltransferase 2D, 2.1.1.43, ALL1-related protein, Myeloid/lymphoid or mixed-lineage leukemia protein 2, KMT2D, ALR, MLL2, MLL4

Dilution

IHC~~1:100~500

E~~N/A

Format

0.5 mg/ml in Tris saline, 0.02% sodium azide, pH7.3 with 0.5% bovine serum albumin

Storage

Maintain refrigerated at 2-8°C for up to 6 months. For long term storage store at -20°C in small aliquots to prevent freeze-thaw cycles.

Precautions

MLL2 Antibody (N-Term) is for research use only and not for use in diagnostic or therapeutic procedures.

MLL2 Antibody (N-Term) - Protein Information**Name** KMT2D**Synonyms** ALR, MLL2, MLL4**Function**

Histone methyltransferase that catalyzes methyl group transfer from S-adenosyl-L-methionine to

the epsilon-amino group of 'Lys-4' of histone H3 (H3K4) (PubMed:25561738). Part of chromatin remodeling machinery predominantly forms H3K4me1 methylation marks at active chromatin sites where transcription and DNA repair take place (PubMed:17500065, PubMed:25561738). Acts as a coactivator for estrogen receptor by being recruited by ESR1, thereby activating transcription (PubMed:16603732).

Cellular Location

Nucleus.

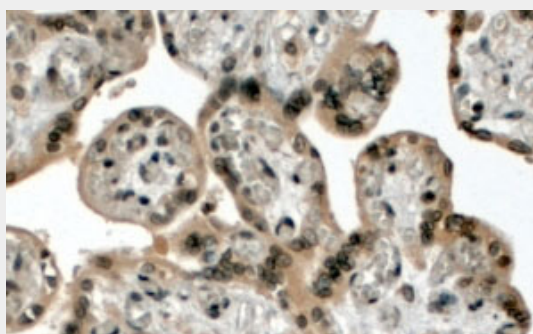
Tissue Location

Expressed in most adult tissues, including a variety of hematoipoietic cells, with the exception of the liver

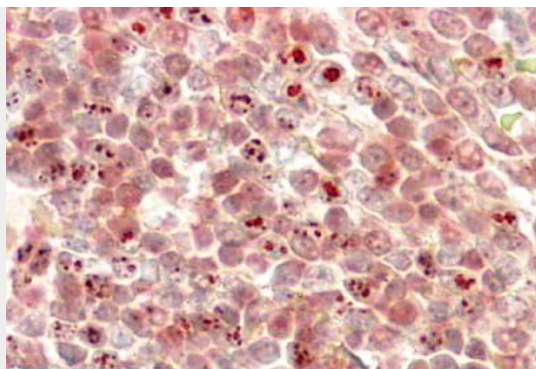
MLL2 Antibody (N-Term) - Protocols

Provided below are standard protocols that you may find useful for product applications.

- [Western Blot](#)
- [Blocking Peptides](#)
- [Dot Blot](#)
- [Immunohistochemistry](#)
- [Immunofluorescence](#)
- [Immunoprecipitation](#)
- [Flow Cytometry](#)
- [Cell Culture](#)

MLL2 Antibody (N-Term) - Images

AF2296a (4 µg/ml) staining of paraffin embedded Human Placenta. Steamed antigen retrieval with citrate buffer pH 6, HRP-staining.



AF2296a (3.8 µg/ml) staining of paraffin embedded Human Liver. Steamed antigen retrieval with citrate buffer pH 6, HRP-staining.

MLL2 Antibody (N-Term) - Background

The immunizing peptide was designed from NP_003473.1. Since then the sequence has changed in the databases and currently differs at two locations in NP_003473.3.

MLL2 Antibody (N-Term) - References

Structure and expression pattern of human ALR, a novel gene with strong homology to ALL-1 involved in acute leukemia and to *Drosophila trithorax*. Prasad R, Zhadanov AB, Sedkov Y, Bullrich F, Druck T, Rallapalli R, Yano T, Alder H, Croce CM, Huebner K, Mazo A, Canaani E. *Oncogene*. 1997 Jul 31;15(5):549-60. PMID: 9247308