

**SUV39H2 Antibody (C-Term)**  
**Peptide-affinity purified goat antibody**  
**Catalog # AF2298a****Specification**

---

**SUV39H2 Antibody (C-Term) - Product Information**

Application	WB, E
Primary Accession	<a href="#">O9H5I1</a>
Other Accession	<a href="#">NP_078946.1</a> , <a href="#">79723</a>
Reactivity	Rat
Predicted	Human, Mouse, Pig, Dog
Host	Goat
Clonality	Polyclonal
Concentration	0.5 mg/ml
Isotype	IgG
Calculated MW	46682

**SUV39H2 Antibody (C-Term) - Additional Information****Gene ID** 79723**Other Names**

Histone-lysine N-methyltransferase SUV39H2, 2.1.1.43, Histone H3-K9 methyltransferase 2, H3-K9-HMTase 2, Lysine N-methyltransferase 1B, Suppressor of variegation 3-9 homolog 2, Su(var)3-9 homolog 2, SUV39H2, KMT1B

**Dilution**

WB~~1:1000

E~~N/A

**Format**

0.5 mg/ml in Tris saline, 0.02% sodium azide, pH7.3 with 0.5% bovine serum albumin

**Storage**

Maintain refrigerated at 2-8°C for up to 6 months. For long term storage store at -20°C in small aliquots to prevent freeze-thaw cycles.

**Precautions**

SUV39H2 Antibody (C-Term) is for research use only and not for use in diagnostic or therapeutic procedures.

**SUV39H2 Antibody (C-Term) - Protein Information****Name** SUV39H2**Synonyms** KMT1B

### Function

Histone methyltransferase that specifically trimethylates 'Lys-9' of histone H3 using monomethylated H3 'Lys-9' as substrate. H3 'Lys-9' trimethylation represents a specific tag for epigenetic transcriptional repression by recruiting HP1 (CBX1, CBX3 and/or CBX5) proteins to methylated histones. Mainly functions in heterochromatin regions, thereby playing a central role in the establishment of constitutive heterochromatin at pericentric and telomere regions. H3 'Lys-9' trimethylation is also required to direct DNA methylation at pericentric repeats. SUV39H1 is targeted to histone H3 via its interaction with RB1 and is involved in many processes, such as cell cycle regulation, transcriptional repression and regulation of telomere length. May participate in regulation of higher-order chromatin organization during spermatogenesis. Recruited by the large PER complex to the E-box elements of the circadian target genes such as PER2 itself or PER1, contributes to the conversion of local chromatin to a heterochromatin-like repressive state through H3 'Lys-9' trimethylation.

### Cellular Location

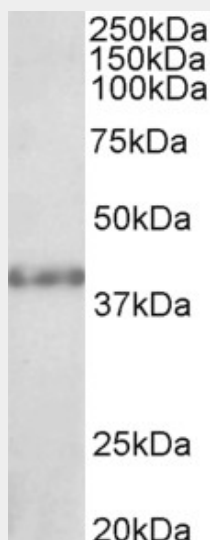
Nucleus. Chromosome, centromere. Note=Associates with centromeric constitutive heterochromatin.

### SUV39H2 Antibody (C-Term) - Protocols

Provided below are standard protocols that you may find useful for product applications.

- [Western Blot](#)
- [Blocking Peptides](#)
- [Dot Blot](#)
- [Immunohistochemistry](#)
- [Immunofluorescence](#)
- [Immunoprecipitation](#)
- [Flow Cytometry](#)
- [Cell Culture](#)

### SUV39H2 Antibody (C-Term) - Images



AF2298a (1 µg/ml) staining of Rat Kidney lysate (35 µg protein in RIPA buffer). Primary incubation was 1 hour. Detected by chemiluminescence.

### SUV39H2 Antibody (C-Term) - References

Loss of the Suv39h histone methyltransferases impairs mammalian heterochromatin and genome stability. Peters AH, O'Carroll D, Scherthan H, Mechtler K, Sauer S, Schofer C, Weipoltshammer K, Pagani M, Lachner M, Kohlmaier A, Opravil S, Doyle M, Sibilia M, Jenuwein T. Cell. 2001 Nov 2;107(3):323-37. PMID: 11701123