

RASIP1 / RAIN Antibody (C-Term)
Peptide-affinity purified goat antibody
Catalog # AF2413a**Specification**

RASIP1 / RAIN Antibody (C-Term) - Product Information

| | |
|-------------------|---|
| Application | IHC, E |
| Primary Accession | Q5U651 |
| Other Accession | NP_060275.2 , 54922 |
| Predicted | Human |
| Host | Goat |
| Clonality | Polyclonal |
| Concentration | 0.5 mg/ml |
| Isotype | IgG |
| Calculated MW | 103457 |

RASIP1 / RAIN Antibody (C-Term) - Additional Information**Gene ID** 54922**Other Names**

Ras-interacting protein 1, Rain, RASIP1

Dilution

IHC~~1:100~500

E~~N/A

Format

0.5 mg/ml in Tris saline, 0.02% sodium azide, pH7.3 with 0.5% bovine serum albumin

Storage

Maintain refrigerated at 2-8°C for up to 6 months. For long term storage store at -20°C in small aliquots to prevent freeze-thaw cycles.

Precautions

RASIP1 / RAIN Antibody (C-Term) is for research use only and not for use in diagnostic or therapeutic procedures.

RASIP1 / RAIN Antibody (C-Term) - Protein Information**Name** RASIP1**Function**

Required for the proper formation of vascular structures that develop via both vasculogenesis and angiogenesis. Acts as a critical and vascular-specific regulator of GTPase signaling, cell architecture, and adhesion, which is essential for endothelial cell morphogenesis and blood vessel tubulogenesis. Regulates the activity of Rho GTPases in part by recruiting ARHGAP29 and

suppressing RhoA signaling and dampening ROCK and MYH9 activities in endothelial cells (By similarity). May act as effector for Golgi-bound HRAS and other Ras- like proteins. May promote HRAS-mediated transformation. Negative regulator of amino acid starvation-induced autophagy.

Cellular Location

Cytoplasm, perinuclear region. Golgi apparatus, Golgi stack. Note=Associated with perinuclear vesicles. Is recruited to Golgi stacks by activated HRAS

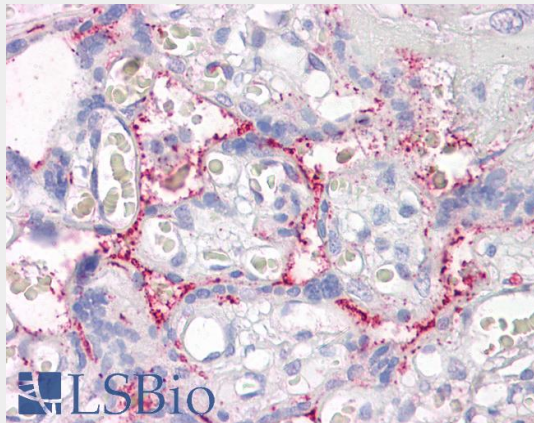
Tissue Location

Highly expressed in heart. Detected at lower levels in placenta and pancreas.

RASIP1 / RAIN Antibody (C-Term) - Protocols

Provided below are standard protocols that you may find useful for product applications.

- [Western Blot](#)
- [Blocking Peptides](#)
- [Dot Blot](#)
- [Immunohistochemistry](#)
- [Immunofluorescence](#)
- [Immunoprecipitation](#)
- [Flow Cytometry](#)
- [Cell Culture](#)

RASIP1 / RAIN Antibody (C-Term) - Images

AF2413a (3.75 µg/ml) staining of paraffin embedded Human Placenta. Steamed antigen retrieval with citrate buffer pH 6, AP-staining.

RASIP1 / RAIN Antibody (C-Term) - References

Identification and Characterization of Rain, a Novel Ras-interacting Protein with a Unique Subcellular Localization Natalia Y. Mitin, Melissa B. Ramocki, Alfred J. Zullo, Channing J. Der, Stephen F. Konieczny, and Elizabeth J. Taparowsky J. Biol. Chem. 2004;279 22353-22361 PMID: 15031288